

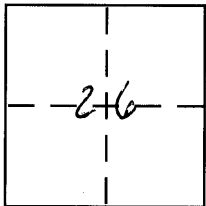
**CORNER RECORD**

Document Number 1057-WW

City of MERCED

County of MERCED, California

Brief Legal Description PARCEL 12 95 PM 30



**CORNER TYPE**

- Government Corner  Control
- Meander  Property
- Rancho  Other
- Date of Survey 12-6-07

**COORDINATES (Optional)**

- N. \_\_\_\_\_
- E. \_\_\_\_\_
- Zone \_\_\_\_\_ NAD27  NAD83
- NAD83 Epoch \_\_\_\_\_
- Elev. \_\_\_\_\_
- Vert. Datum: NGVD29  NAVD88
- Meas. Units: Metric  Imperial

Corner - Left as found  Found and tagged  Established  Reestablished  Rebuilt

Identification and type of corner found: Evidence used to identify or procedure used to establish or reestablish the corner:

SEE SKETCH

A description of the physical condition of the monument as found and as set or reset:

SEE SKETCH

**SURVEYOR'S STATEMENT**

This Corner Record was prepared by me or under my direction in conformance with the Land Surveyor's Act on 2-11-08

Signed [Signature] P.L.S. or R.C.E. No. \_\_\_\_\_



**COUNTY SURVEYOR'S STATEMENT**

This Corner Record was received Feb. 14, 2008

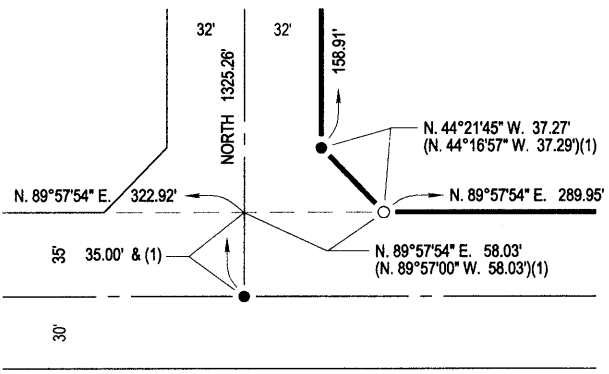
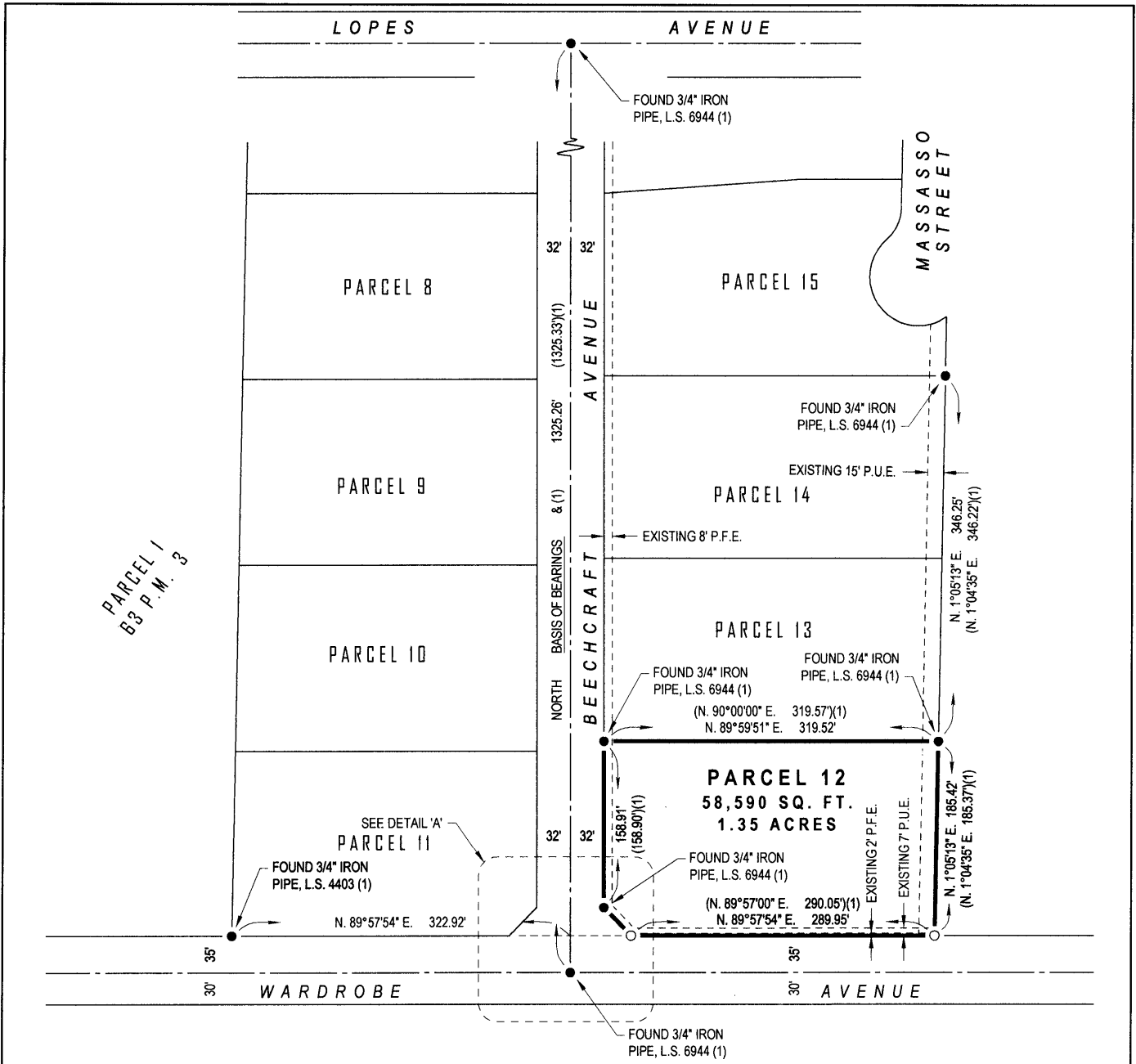
and examined and filed Feb. 15, 2008

Signed [Signature] P.L.S. or R.C.E. No. 4895

Title Dep. County Surveyor



County Surveyor's Comment \_\_\_\_\_



**DETAIL 'A'**  
NOT TO SCALE

**LEGEND:**

- SET 3/4" IRON PIPE, L.S. 4403
- FOUND AND ACCEPTED MONUMENT AS INDICATED
- P.U.E. PUBLIC UTILITY EASEMENT
- P.F.E. PUBLIC FACILITIES EASEMENT

**BASIS OF BEARINGS:**

NORTH FOR THE CENTERLINE OF BEECHCRAFT AVENUE AS SHOWN ON THE PARCEL MAP FOR SKYVIEW INDUSTRIAL PARK PHASE 2, VOLUME 95, PARCEL MAPS, PAGE 30, MERCED COUNTY RECORDS.

**REFERENCE:**

- (1) PARCEL MAP FOR SKYVIEW INDUSTRIAL PARK PHASE 2, 95 P.M. 30, M.C.R.

