

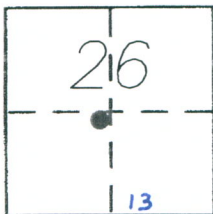
CORNER RECORD

Document Number 1057-AA

City of MERCED

County of MERCED, California

Brief Legal Description N.E. CORNER LOT 44, 20 O.P. 49, M.C.R.



T7S, R14E

CORNER TYPE

Government Corner Control
 Meander Property
 Rancho Other
 Date of Survey 8/3/2016

COORDINATES (Optional)

N. _____
 E. _____
 Zone _____ NAD27 NAD83
 NAD83 Epoch _____
 Elev. _____
 Vert. Datum: NGVD29 NAVD88
 Meas. Units: Metric Imperial

Corner - Left as found Found and tagged Established Reestablished Rebuilt

Identification and type of corner found: Evidence used to identify or procedure used to establish or reestablish the corner:
SEE MAP ON REVERSE SIDE

MONUMENT MAY BE DESTROYED WITH CONSTRUCTION PROJECT.

A description of the physical condition of the monument as found and as set or reset: _____

SURVEYOR'S STATEMENT

This Corner Record was prepared by me or under my direction in conformance with the Land Surveyor's Act on AUG. 5, 2016

Signed [Signature] P.L.S or R.C.E. No. 7621



COUNTY SURVEYOR'S STATEMENT

This Corner Record was received AUGUST 5, 2016

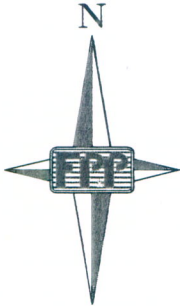
and examined and filed AUGUST 8, 2016

Signed Zach T. Janz P.L.S or R.C.E. No. 8664

Title COUNTY SURVEYOR



County Surveyor's Comment _____

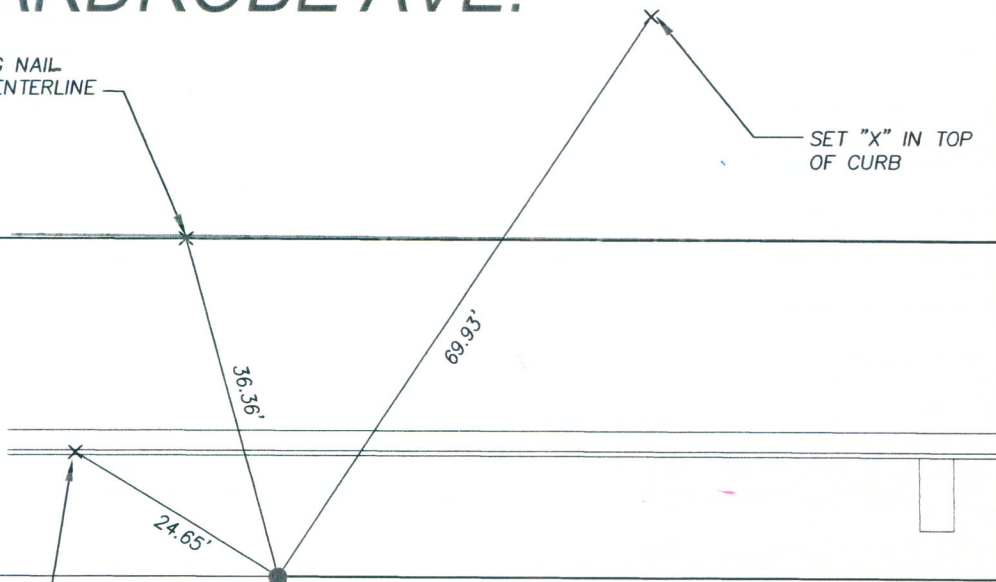


SCALE 1" = 20'

WARDROBE AVE.

SET MAG NAIL
NEAR CENTERLINE

SET "X" IN TOP
OF CURB



SET "X" IN TOP
OF CURB

LOT 44
20 O.P. 49
M.C.R.

FOUND 3/4" IRON PIPE
WITH R.C.E. 6888, TAG
20 O.P. 49, M.C.R.