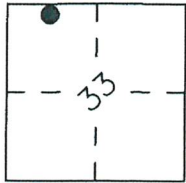


# CORNER RECORD

Agency Index 1052-J  
Document Number \_\_\_\_\_

City of N/A County of Merced, California  
Brief Legal Description Parcel Corner monument located in Section 33, T. 5 S., R. 11 E., Mount Diablo Base and Meridian.



### CORNER TYPE

- Government Corner  Control
- Meander  Property
- Rancho  Other

Date of Survey 1-4-18

### COORDINATES (Optional)

- N. \_\_\_\_\_ E. \_\_\_\_\_
- Elevation. \_\_\_\_\_
- Units  Metric  U.S. Survey Foot
- Horizontal Datum \_\_\_\_\_
- Zone \_\_\_\_\_ Epoch Date \_\_\_\_\_
- Vertical Datum \_\_\_\_\_

- Complies with Public Resources Code §§8801-8819
- Complies with Public Resources Code §§8890-8902

- PLS Act Ref.:  8765(d)  8771  8773  Other: \_\_\_\_\_
- Corner/Monument:  Left as found  Established  Rebuilt  Pre-Construction
- Found and tagged  Reestablished  Referenced  Post-Construction

Narrative of corner identified and monument as found, set, reset, replaced, or removed:  
 See sheet #2 for description(s):

Found 3/4" Iron Pipe tagged LS 4403, shown on Parcel Map filed in Book 93 of Parcel Maps, at Page 41-42, Merced County Records.

### SURVEYOR'S STATEMENT

This Corner Record was prepared by me or under my direction in conformance with the Professional Land Surveyor's Act on 2-5-18

Signed Richard K. Fultz P.L.S. or R.C.E. No. 7604



### COUNTY SURVEYOR'S STATEMENT

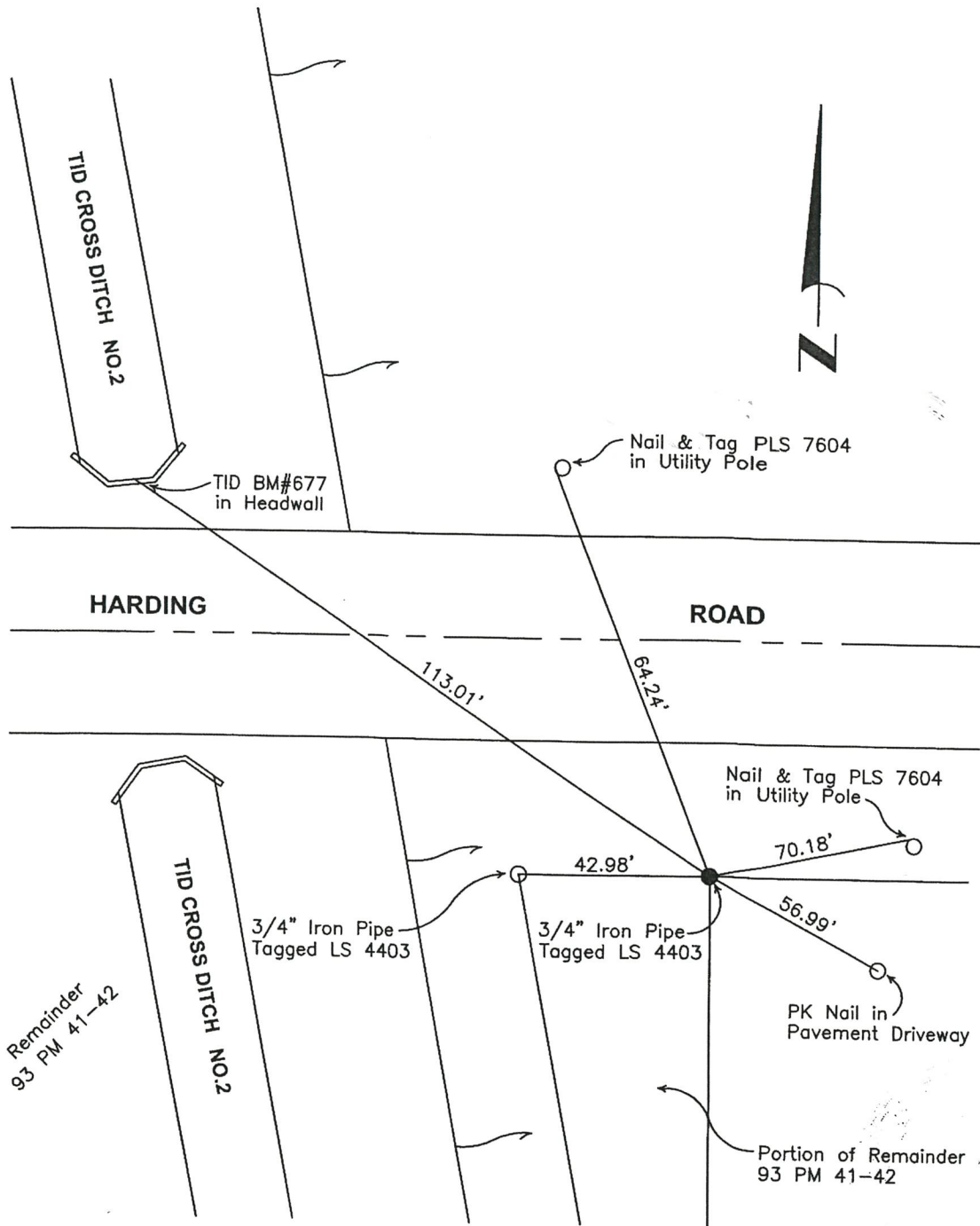
This Corner Record was reviewed FEBRUARY 5, 2018 and examined and filed FEBRUARY 15, 2018

Signed Zachary T. Janz P.L.S. or R.C.E. No. 8664

Title COUNTY SURVEYOR

County Surveyor's Comment





- Found 3/4" Iron Pipe tagged LS 4403 as per 93 PM 41-42.
- Tie point as noted.