

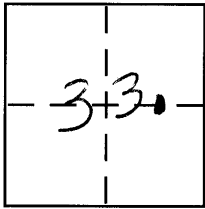
CORNER RECORD

Document Number 1052-H

City of _____

County of MERCED, California

Brief Legal Description SW CORNER OF SE 1/4 OF THE NE 1/4 SEC 33 5/11



CORNER TYPE

Government Corner Control
Meander Property
Rancho Other
Date of Survey 11-17-08

COORDINATES (Optional)

N. _____
E. _____
Zone _____ NAD27 NAD83
NAD83 Epoch _____
Elev. _____
Vert. Datum: NGVD29 NAVD88
Meas. Units: Metric Imperial

Corner - Left as found Found and tagged Established Reestablished Rebuilt

Identification and type of corner found: Evidence used to identify or procedure used to establish or reestablish the corner:
SEE SKETCH

A description of the physical condition of the monument as found and as set or reset:
SEE SKETCH

SURVEYOR'S STATEMENT

This Corner Record was prepared by me or under my direction in conformance with the Land Surveyor's Act on December 10, 2008

Signed [Signature] P.L.S or R.C.E. No. _____



COUNTY SURVEYOR'S STATEMENT

This Corner Record was received December 10, 2008

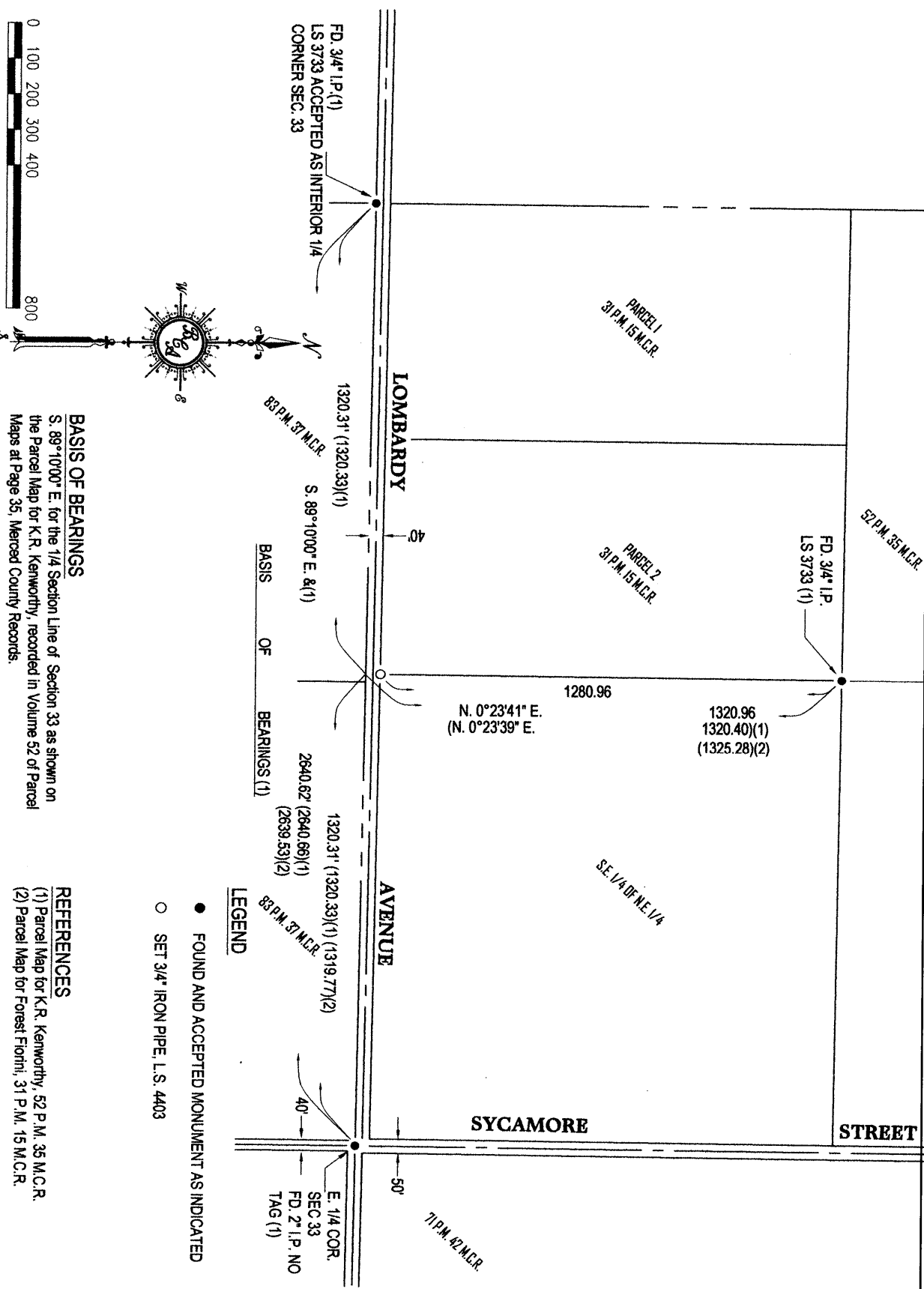
and examined and filed December 10, 2008

Signed [Signature] P.L.S or R.C.E. No. 4895

Title Dep. County Surveyor



County Surveyor's Comment _____



BASIS OF BEARINGS
 S. 89°10'00" E. for the 1/4 Section Line of Section 33 as shown on the Parcel Map for K.R. Kenworthy, recorded in Volume 52 of Parcel Maps at Page 35, Merced County Records.

REFERENCES
 (1) Parcel Map for K.R. Kenworthy, 52 P.M. 35 M.C.R.
 (2) Parcel Map for Forest Fiorini, 31 P.M. 15 M.C.R.

C:\Land Projects\2008\080521.dwg\FIORINI.dwg Date: 11/19/08 By: MSM