

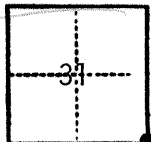
#1023

CC IER RECORD

COUNTY OF Merced T. 6 S. R. 11 E. M.D.B.& MERIDIAN CALIFORNIA

CORNER TYPE: GOV'T. CORNER MEANDER RANCHO CONTROL OTHER

CORNER IDENTIFICATION — DATE OF VISIT Dec. 24, 19 82



Southwest corner section 32

CORNER — LEFT AS FOUND FOUND AND TAGGED REESTABLISHED OBLITERATED CORNER REBUILT

PHYSICAL DESCRIPTION OF CORNER FOUND; EVIDENCE AND METHOD USED TO IDENTIFY OR REESTABLISH

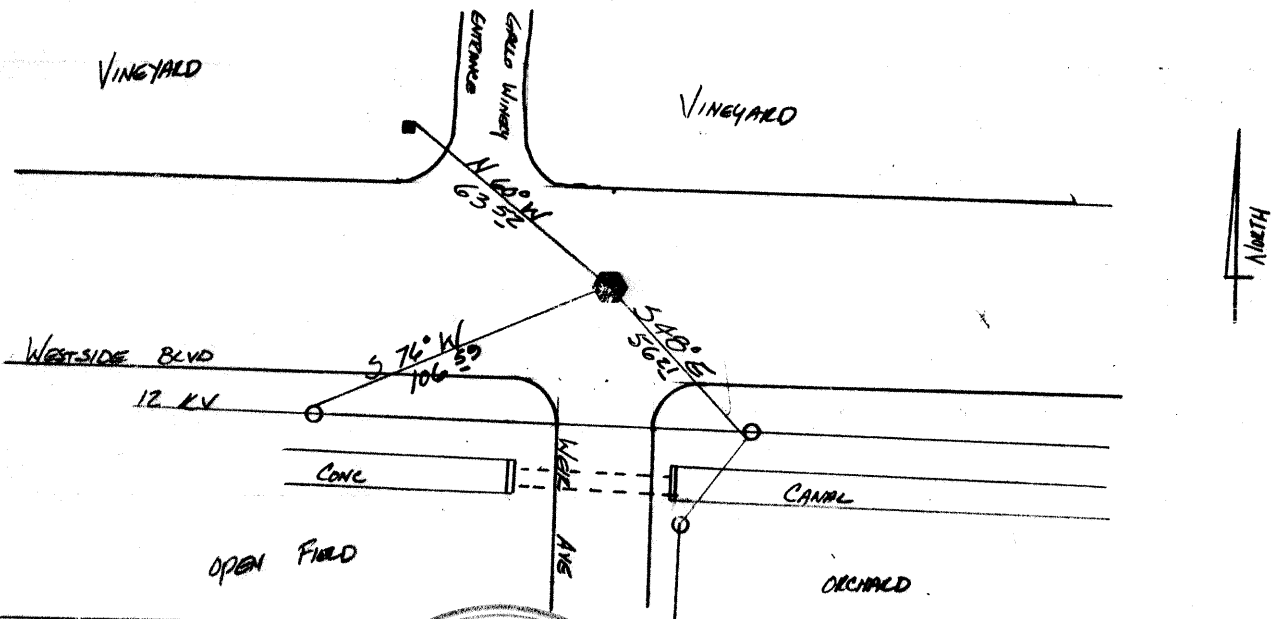
Found 3/8" rebar in Mon well. *in 5/8" I.P.*

PHYSICAL DESCRIPTION OF MONUMENTS REBUILT OR PERPETUATED

CORNER LOCATED BY P.G.&E. SURVEY PACIFIC GAS AND ELECTRIC CO.
BUT NOT VERIFIED LAND DEPT. JOB GM 4322160

CALIFORNIA COORDINATE SYSTEM ORDER: FIRST SECOND THIRD
STATIONS USED: NOS (USC & GS) STATE COUNTY OTHER STATION _____ STATION _____
ZONE _____ ELEVATION _____ NORTHINGS (M) _____ EASTINGS (M) _____

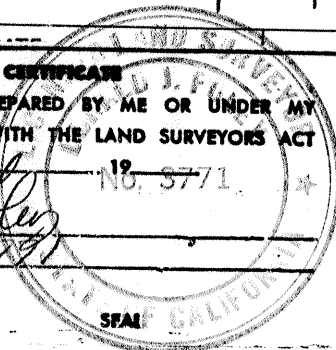
REMARKS: (Include reference tie or witness points, remarks and topo of area)



SURVEYOR'S CERTIFICATE

THIS CORNER RECORD WAS PREPARED BY ME OR UNDER MY DIRECTION IN CONFORMANCE WITH THE LAND SURVEYORS ACT ON JAN 11 1983 19 83 NO. 8771

SIGNED: *[Signature]*
L.S. or R.E. No. 5771



COUNTY SURVEYOR'S CERTIFICATE

THE CORNER RECORD WAS RECEIVED _____ 19 _____ AND EXAMINED AND FILED _____ 19 _____

BY: _____ TITLE: _____

DOCUMENT No. 1023

STATEMENT ON BACK OF SHEET YES NO