

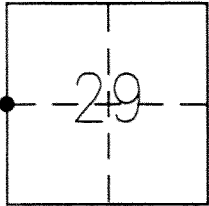
CORNER RECORD

Document Number 1014

City of _____

County of MERCED, California

Brief Legal Description WEST 1/4 CORNER OF SECTION 29 T.6S. R.11E.



CORNER TYPE

Government Corner Control
Meander Property
Rancho Other
Date of Survey MARCH 1, 2013

COORDINATES (Optional)

N. _____
E. _____
Zone _____ NAD27 NAD83
NAD83 Epoch _____
Elev. _____
Vert. Datum: NGVD29 NAVD88
Meas. Units: Metric Imperial

Corner - Left as found Found and tagged Established Reestablished Rebuilt

Identification and type of corner found: Evidence used to identify or procedure used to establish or reestablish the corner:
FOUND 1" IRON PIPE IN MONUMENT WELL. ACCEPTED AS THE WEST 1/4 CORNER OF SECTION 29, T.6S., R.11E.
PER MERCED COUNTY FIELD BOOK 714 PG 69, MONUMENT TIED OUT PRIOR TO OVERLAY OF RIVER ROAD.

A description of the physical condition of the monument as found and as set or reset: SEE PAGE 2

SURVEYOR'S STATEMENT

This Corner Record was prepared by me or under my direction in conformance with the Land Surveyor's Act on July 8, 2013

Signed [Signature] P.L.S or ~~P.C.E.~~ No. 4895



COUNTY SURVEYOR'S STATEMENT

This Corner Record was received July 8, 2013

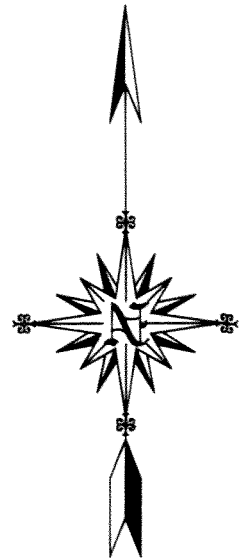
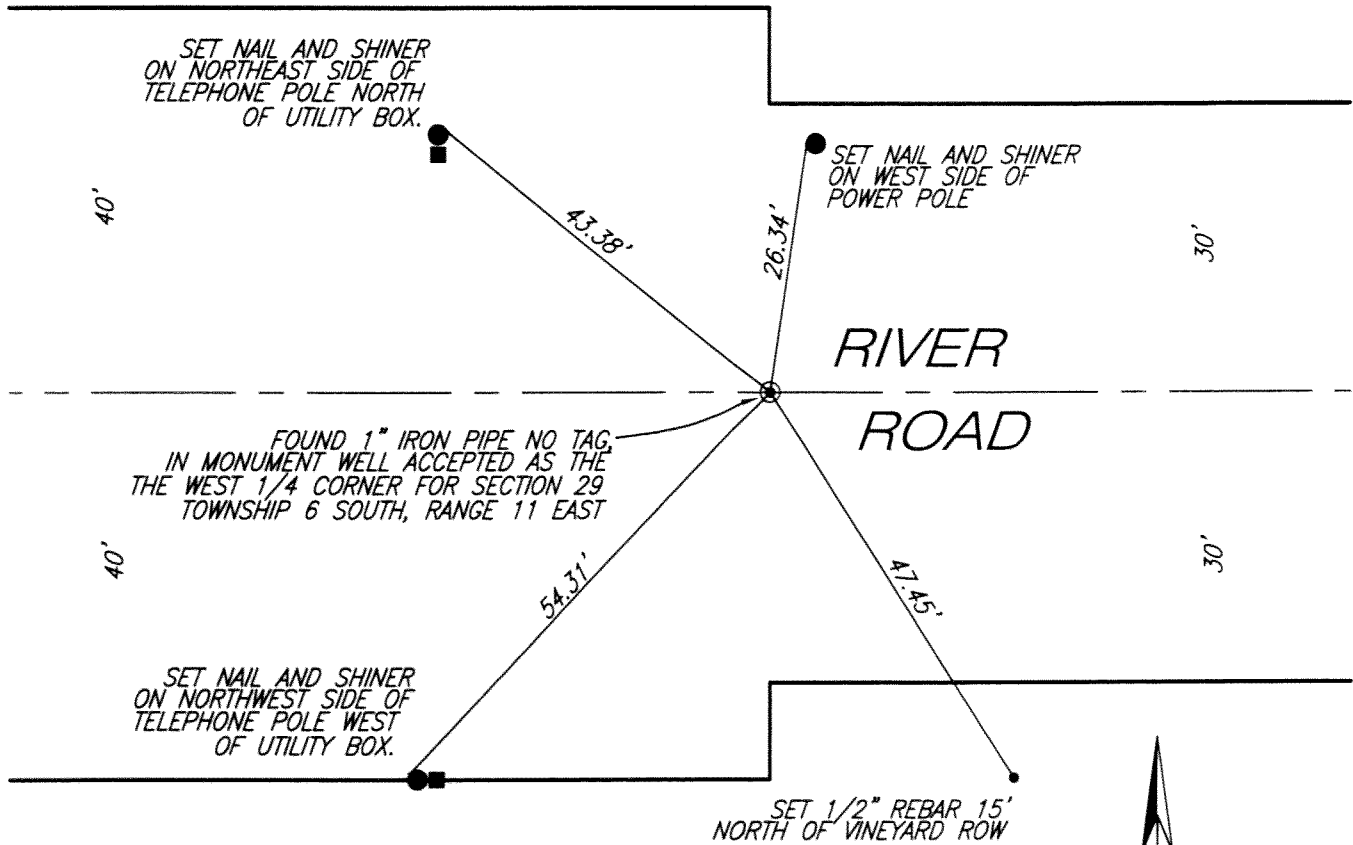
and examined and filed July 8, 2013

Signed [Signature] P.L.S or ~~P.C.E.~~ No. 4895

Title County Surveyor



County Surveyor's Comment _____



SCALE: 1" = 20'