

CORNER RECORD

Document Number 990-R
County of MERCED, California

City of _____
Brief Legal Description FRONT LOT CORNERS ON THE NORTHERLY SIDE OF ASHBY ROAD IN THE SOUTHWEST QUARTER OF SECTION 8, T.7S, R.13E, M.D.B.&M.

NW 1/4	NE 1/4
SW 1/4	SE 1/4

SEC.8 T7S, R13E

CORNER TYPE

Government Corner Control
 Meander Property
 Rancho Other

Date of Survey 7-26-2012

COORDINATES (Optional)

N _____
 E _____
 Zone _____ NAD27 NAD83
 NAD83 Epoch _____
 Elev. _____
 Vert. Datum: NVGD29 NVGD88
 Meas. Units: Metric Imperial

Corner- Left as found Found and tagged Established Reestablished Rebuilt

Identification and type of corner found: Evidence used to identify or procedure used to establish or reestablish the corner:
MONUMENTS AS SHOWN ON PAGE 2.

A description of the physical condition of the monument as found and as set or reset: _____
MONUMENTS ARE IN AN AREA OF RECONSTRUCTION, SET TIES AS SHOWN ON PAGE 2.

SURVEYOR'S STATEMENT

This Corner Record was prepared by me or under my direction in conformance with
 the Land Surveyors' Act on AUGUST 29, 2012,



Signed [Signature] P.L.S. or R.C.E. Number 6953

COUNTY SURVEYOR'S STATEMENT

This Corner Record was received Sept 4, 2012 and examined
 and filed Sept 18, 2012

Signed [Signature] P.L.S. or R.C.E. No: 4895

Title Acting County Surveyor

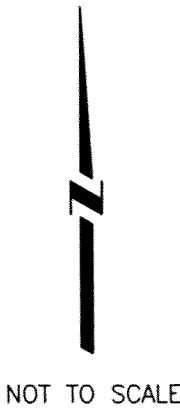
County Surveyor's Comment _____



SET CONCRETE NAIL WITH BRASS TAG L.S. 6953, IN BUHACH RD. 2'± EAST OF WEST LIP OF GUTTER, 500'± NORTH OF GREEN SANDS AVE.

SET CONCRETE NAIL WITH BRASS TAG L.S. 6953, IN BUHACH RD. 1'± EAST OF WEST LIP OF GUTTER, 75'± SOUTH OF GREEN SANDS AVE.

BEARING & DISTANCE TABLE		
PT-PT	BEARING	DISTANCE
A-B	S 68°12'23" E	479.42'
A-C	N 40°41'20" W	2936.42'
C-D	N 01°39'30" E	578.79'
A-E	N 47°13'53" W	175.94'
A-F	N 51°40'10" W	279.81'
A-G	N 53°36'05" W	643.95'
A-H	N 53°31'19" W	672.32'
A-I	N 53°32'30" W	722.88'
A-J	N 52°53'06" W	998.29'
A-K	N 52°33'06" W	1351.03'
A-L	N 51°40'41" W	1669.00'
A-M	N 51°40'18" W	1813.11'
A-N	N 51°40'09" W	1918.98'
A-O	N 51°59'55" W	2163.86'

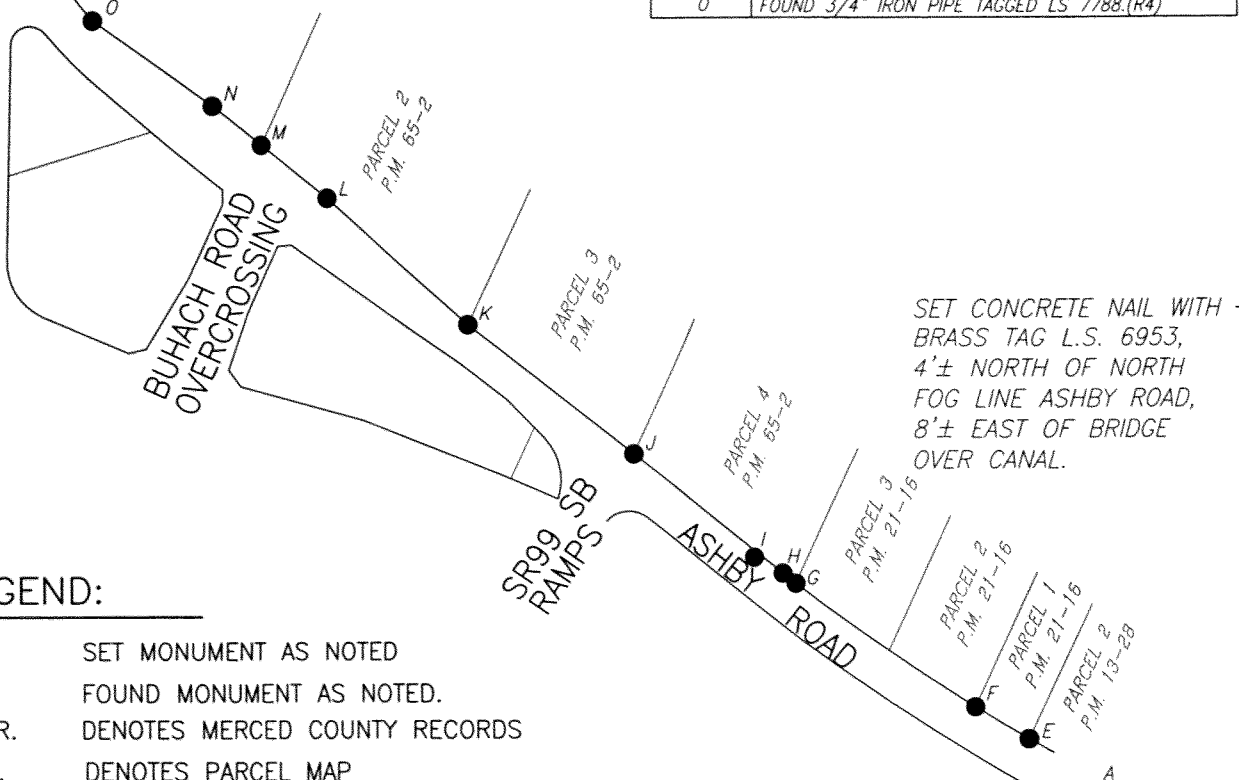


REFERENCE:

- (R1) P.M. 21-16, M.C.R.
- (R2) P.M. 13-28, M.C.R.
- (R3) P.M. 65-2, M.C.R.
- (R4) R.S. 47-2, M.C.R.

MONUMENT DESCRIPTION TABLE	
MONUMENT	DESCRIPTION
E	FOUND 3/4" IRON PIPE NOT TAGGED.(R1)
F	FOUND 3/4" IRON PIPE TAGGED LS 3812.(R1)
G	FOUND 3/4" IRON PIPE NOT TAGGED.(R1)(R3)
H	FOUND 3/4" IRON PIPE NOT TAGGED.(R1)(R2)(R3)
I	FOUND 3/4" IRON PIPE TAGGED LS 656.(R1)(R2)(R3)
J	FOUND 3/4" REBAR NOT TAGGED.(R3)
K	FOUND 3/4" REBAR NOT TAGGED.(R3)
L	FOUND 3/4" REBAR NOT TAGGED.(R3)
M	FOUND 3/4" REBAR NOT TAGGED.(R3)
N	FOUND 3/4" IRON PIPE TAGGED LS 7788.(R4)
O	FOUND 3/4" IRON PIPE TAGGED LS 7788.(R4)

BUHACH ROAD



SET CONCRETE NAIL WITH BRASS TAG L.S. 6953, 4'± NORTH OF NORTH FOG LINE ASHBY ROAD, 8'± EAST OF BRIDGE OVER CANAL.

SET CONCRETE NAIL WITH BRASS TAG L.S. 6953, IN SOUTH FOG LINE, 30'± EAST OF DRIVEWAY FOR 3060 ASHBY ROAD.

LEGEND:

- ⊗ SET MONUMENT AS NOTED
- FOUND MONUMENT AS NOTED.
- M.C.R. DENOTES MERCED COUNTY RECORDS
- P.M. DENOTES PARCEL MAP
- R.S. DENOTES RECORD OF SURVEY
- (M) MEASURED DISTANCE. ALL DISTANCES ARE MEASURED UNLESS NOTED OTHERWISE.