

CORNER RECORD

Document Number 990-R(2)

City of _____

County of MERCED, California

Brief Legal Description FRONT LOT CORNERS ON THE NORTHERLY SIDE OF ASHBY ROAD IN THE SOUTHWEST QUARTER OF SECTION 8, T.7S, R.13E, M.D.B.&M.

NW 1/4	NE 1/4
SW 1/4	SE 1/4

CORNER TYPE

Government Corner Control
 Meander Property
 Rancho Other

COORDINATES (Optional)

N _____
 E _____
 Zone _____ NAD27 NAD83
 NAD83 Epoch _____
 Elev. _____
 Vert. Datum: NVGD29 NVGD88
 Meas. Units: Metric Imperial

SEC.8 T7S, R13E

Date of Survey 01-07-2013

Corner- Left as found Found and tagged Established Reestablished Rebuilt

Identification and type of corner found: Evidence used to identify or procedure used to establish or reestablish the corner:
MONUMENTS AS SHOWN ON PAGE 2 WERE DESTROYED DURING CONSTRUCTION. FOUND WITNESS CORNERS AS SHOWN ON CORNER RECORD DOCUMENT NUMBER 990-R, MERCED COUNTY RECORDS.

A description of the physical condition of the monument as found and as set or reset: _____
SET SIX (6) MAG NAILS WITH BRASS TAGS STAMPED L.S. 6953 FROM TIES AS SHOWN ON PAGE 2.

SURVEYOR'S STATEMENT

This Corner Record was prepared by me or under my direction in conformance with the Land Surveyors' Act on JANUARY 15, 2013,



Signed *Mathew* P.L.S. or R.C.E. Number 6953

COUNTY SURVEYOR'S STATEMENT

This Corner Record was received February 5, 2013 and examined and filed February 6, 2013



Signed *J. Steven Reichmuth* P.L.S. or R.C.E. No: 4895

Title Acting County Surveyor

County Surveyor's Comment _____

D
 FOUND CONCRETE NAIL WITH BRASS TAG L.S. 6953, IN BUHACH RD. 2'± EAST OF WEST LIP OF GUTTER, 500'± NORTH OF GREEN SANDS AVE.(R2)

C
 FOUND CONCRETE NAIL WITH BRASS TAG L.S. 6953, IN BUHACH RD. 1'± EAST OF WEST LIP OF GUTTER, 75'± SOUTH OF GREEN SANDS AVE.(R2)

BEARING & DISTANCE TABLE

PT-PT	BEARING	DISTANCE
A-B	S 68°12'23" E	479.42'(M)(R2)
A-C	N 40°41'20" W	2936.42'(M)(R2)
C-D	N 01°39'30" E	578.79'(M)(R2)
A-E	N 47°13'53" W	175.94'(M)(R2)
A-F	N 51°40'10" W	279.81'(M)(R2)
A-G	N 53°36'05" W	643.95'(M)(R2)
A-H	N 53°31'19" W	672.32'(M)(R2)
A-I	N 53°32'30" W	722.88'(M)(R2)
A-J	N 52°53'06" W	998.29'(M)(R2)
A-K	N 52°33'06" W	1351.03'(M)(R2)
A-L	N 51°40'41" W	1669.00'(M)(R2)
A-M	N 51°40'18" W	1813.11'(M)(R2)
A-N	N 51°40'09" W	1918.98'(M)(R2)
A-O	N 51°59'55" W	2163.86'(M)(R2)

NOT TO SCALE

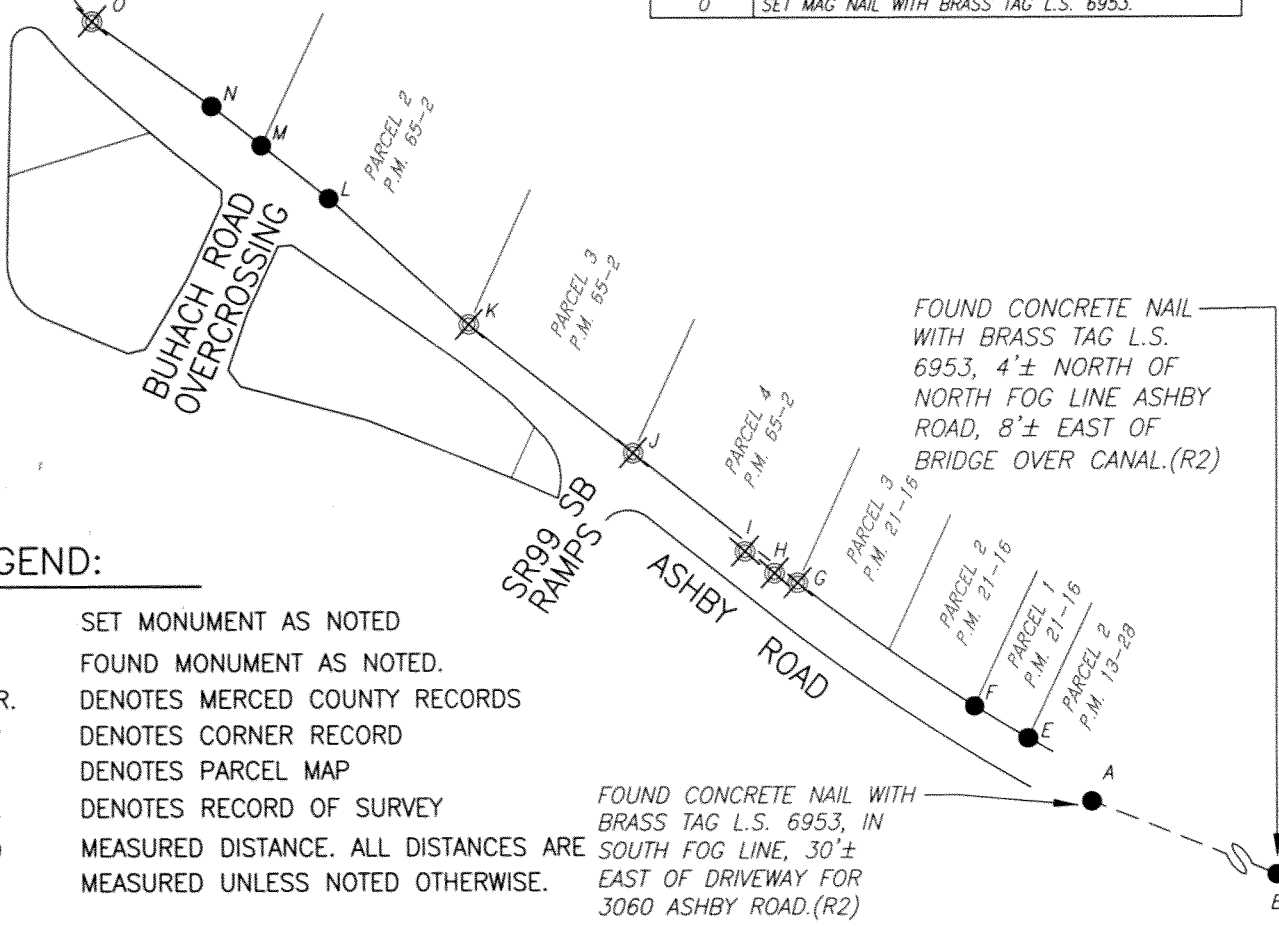
REFERENCE:

- (R1) P.M. 21-16, M.C.R.
- (R2) C.R. 990-R, M.C.R.
- (R3) P.M. 65-2, M.C.R.
- (R4) R.S. 47-2, M.C.R.

MONUMENT DESCRIPTION TABLE

MONUMENT	DESCRIPTION
E	FOUND 3/4" IRON PIPE NOT TAGGED.(R1)(R2)
F	FOUND 3/4" IRON PIPE TAGGED LS 3812.(R1)(R2)
G	SET MAG NAIL WITH BRASS TAG L.S. 6953.
H	SET MAG NAIL WITH BRASS TAG L.S. 6953.
I	SET MAG NAIL WITH BRASS TAG L.S. 6953.
J	SET MAG NAIL WITH BRASS TAG L.S. 6953.
K	SET MAG NAIL WITH BRASS TAG L.S. 6953.
L	FOUND 3/4" REBAR NOT TAGGED.(R2)(R3)
M	FOUND 3/4" REBAR NOT TAGGED.(R2)(R3)
N	FOUND 3/4" IRON PIPE TAGGED LS 7788.(R2)(R4)
O	SET MAG NAIL WITH BRASS TAG L.S. 6953.

BUHACH ROAD



LEGEND:

- ⊗ SET MONUMENT AS NOTED
- FOUND MONUMENT AS NOTED.
- M.C.R. DENOTES MERCED COUNTY RECORDS
- C.R. DENOTES CORNER RECORD
- P.M. DENOTES PARCEL MAP
- R.S. DENOTES RECORD OF SURVEY
- (M) MEASURED DISTANCE. ALL DISTANCES ARE MEASURED UNLESS NOTED OTHERWISE.