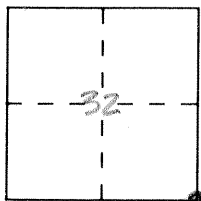


# CORNER RECORD

Document Number 985

City of \_\_\_\_\_ County of MERCED, California

Brief Legal Description S.E. Corner Section 32 8/9



### CORNER TYPE

- Government Corner  Control
- Meander  Property
- Rancho  Other
- Date of Survey 8-14-92

### COORDINATES (Optional)

N. \_\_\_\_\_  
 E. \_\_\_\_\_  
 Zone \_\_\_\_\_ Datum \_\_\_\_\_  
 Elev. \_\_\_\_\_

Corner — Left as found  Found and tagged  Established  Reestablished  Rebuilt

Identification and type of corner found: Evidence used to identify or procedure used to establish or reestablish the corner:

\_\_\_\_\_  
 \_\_\_\_\_  
 \_\_\_\_\_  
 \_\_\_\_\_

A description of the physical condition of the monument as found and as set or reset: \_\_\_\_\_

Fd. 3/4" Iron Pipe, L.S. 3664 inside 1 1/4" Iron Pipe.

Monument box set over existing monument. 8-24-93  
F.B. 658-26

### SURVEYOR'S STATEMENT

This Corner Record was prepared by me or under my direction in conformance with the Land Surveyors' Act on Sept. 7 19 93.

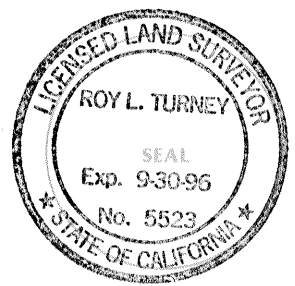
Signed [Signature] L.S. or R.C.E. Number \_\_\_\_\_



### COUNTY SURVEYOR'S STATEMENT

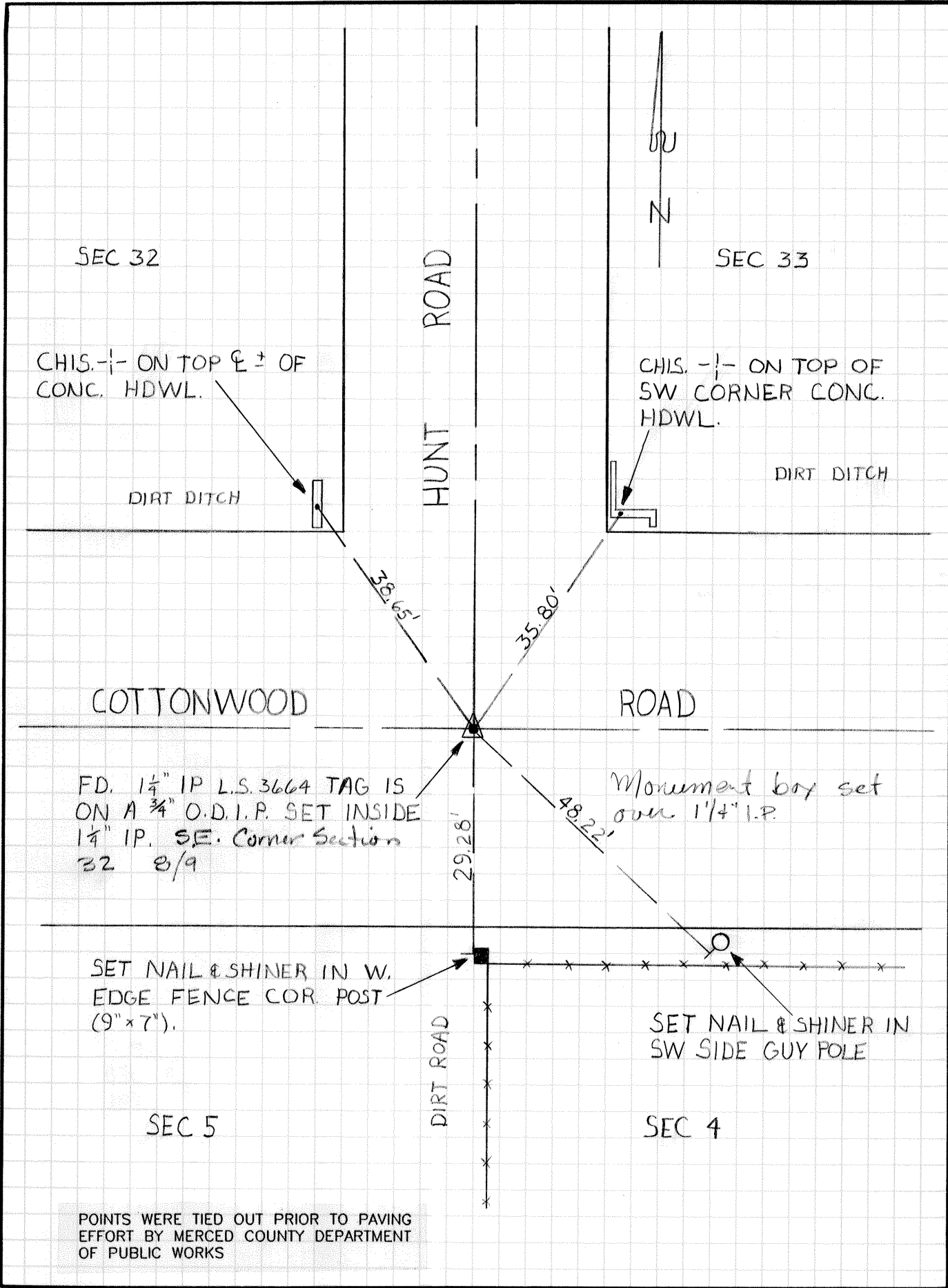
This Corner Record was received SEPT 19 93 and examined and filed SEPT 16 19 93.

Signed [Signature] Title DEP Co. SDR.



County Surveyor's Comment \_\_\_\_\_

\_\_\_\_\_  
 \_\_\_\_\_  
 \_\_\_\_\_



SEC 32

SEC 33

CHIS. -|- ON TOP & ± OF  
CONC. HDWL.

CHIS. -|- ON TOP OF  
SW CORNER CONC.  
HDWL.

DIRT DITCH

DIRT DITCH

HUNT ROAD

COTTONWOOD

ROAD

FD. 1/4" IP L.S. 3664 TAG IS  
ON A 3/4" O.D.I.P. SET INSIDE  
1/4" IP. SE. Corner Section  
32 8/9

Monument box set  
over 1/4" I.P.

SET NAIL & SHINER IN W.  
EDGE FENCE COR. POST  
(9" x 7").

SET NAIL & SHINER IN  
SW SIDE GUY POLE

SEC 5

SEC 4

DIRT ROAD

POINTS WERE TIED OUT PRIOR TO PAVING  
EFFORT BY MERCED COUNTY DEPARTMENT  
OF PUBLIC WORKS