

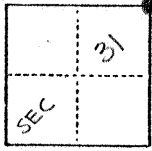
N<sup>o</sup> 902

# CORNER RECORD

COUNTY OF MERCED T. 8 S R. 16 E M.D.B. & MERIDIAN CALIFORNIA

CORNER TYPE: GOV'T. CORNER  MEANDER  RANCHO  CONTROL  OTHER

CORNER IDENTIFICATION — DATE OF VISIT 3/28 19 75



N.E. CORNER SECTION 31

CORNER — LEFT AS FOUND  FOUND AND TAGGED  REESTABLISHED OBLITERATED CORNER  REBUILT

PHYSICAL DESCRIPTION OF CORNER FOUND; EVIDENCE AND METHOD USED TO IDENTIFY OR REESTABLISH

*Found 3/4" Iron Pipe from swing ties shown in Merced County Road Dept. field book 49, page 58*

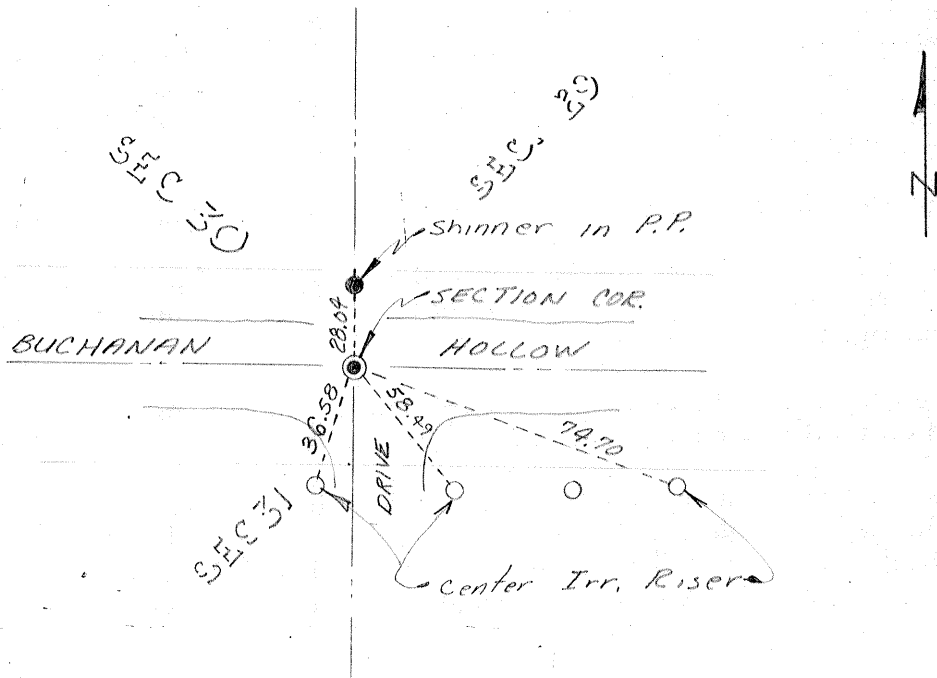
PHYSICAL DESCRIPTION OF MONUMENTS REBUILT OR PERPETUATED

*set 2" Iron Pipe with Tag No 13,760 in Survey Encasement*

CALIFORNIA COORDINATE SYSTEM ORDER: FIRST  SECOND  THIRD   
STATIONS USED: NGS (USC & GS)  STATE  COUNTY  OTHER  STATION \_\_\_\_\_ STATION \_\_\_\_\_  
ZONE \_\_\_\_\_ ELEVATION \_\_\_\_\_ NORTHINGS (Y) \_\_\_\_\_ EASTINGS (X) \_\_\_\_\_

(Fold)

SKETCH: (Include reference tie or witness points, remarks and topo of area)



### SURVEYOR'S CERTIFICATE

THIS CORNER RECORD WAS PREPARED BY ME OR UNDER MY DIRECTION IN CONFORMANCE WITH THE LAND SURVEYORS ACT ON \_\_\_\_\_ 19\_\_\_\_.

SIGNED: \_\_\_\_\_

L.S. or R.C.E. No.: \_\_\_\_\_

SEAL

### COUNTY SURVEYOR'S CERTIFICATE

THE CORNER RECORD WAS RECEIVED \_\_\_\_\_ 19\_\_\_\_ AND EXAMINED AND FILED \_\_\_\_\_ 19\_\_\_\_.

BY: \_\_\_\_\_

TITLE: \_\_\_\_\_

DOCUMENT No. 902

STATEMENT ON BACK OF SHEET

YES  NO