

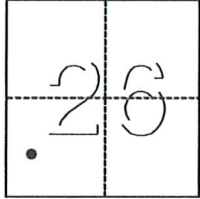
# CORNER RECORD

Agency Index 891-B  
Document Number \_\_\_\_\_

City of \_\_\_\_\_ County of MERCED, California  
Brief Legal Description PARCLE 1, 29 P.M. 3 M.C.R.

### CORNER TYPE

### COORDINATES (Optional)



*T. 7S, R. 12E*

- Government Corner
- Meander
- Rancho
- Control
- Property
- Other

Date of Survey October 2, 2018

N. \_\_\_\_\_ E. \_\_\_\_\_  
 Elevation \_\_\_\_\_  
 Units  Metric  U.S. Survey Foot  
 Horizontal Datum \_\_\_\_\_  
 Zone \_\_\_\_\_ Epoch Date \_\_\_\_\_  
 Vertical Datum \_\_\_\_\_  
 Complies with Public Resources Code §§8801-8819  
 Complies with Public Resources Code §§8890-8902

PLS Act Ref.:  8765(d)  8771  8773  Other:  
 Corner/Monument:  Left as found  Established  Rebuilt  Pre-Construction  
 Found and tagged  Reestablished  Referenced  Post-Construction

Narrative of corner identified and monument as found, set, reset, replaced, or removed:  
 See sheet #2 for description(s):

### SURVEYOR'S STATEMENT

This Corner Record was prepared by me or under my direction in conformance with  
 the Professional Land Surveyors' Act on 9-11-19  
 Signed Duane J. Andrews P.L.S. or ~~R.C.E.~~ No. 4052

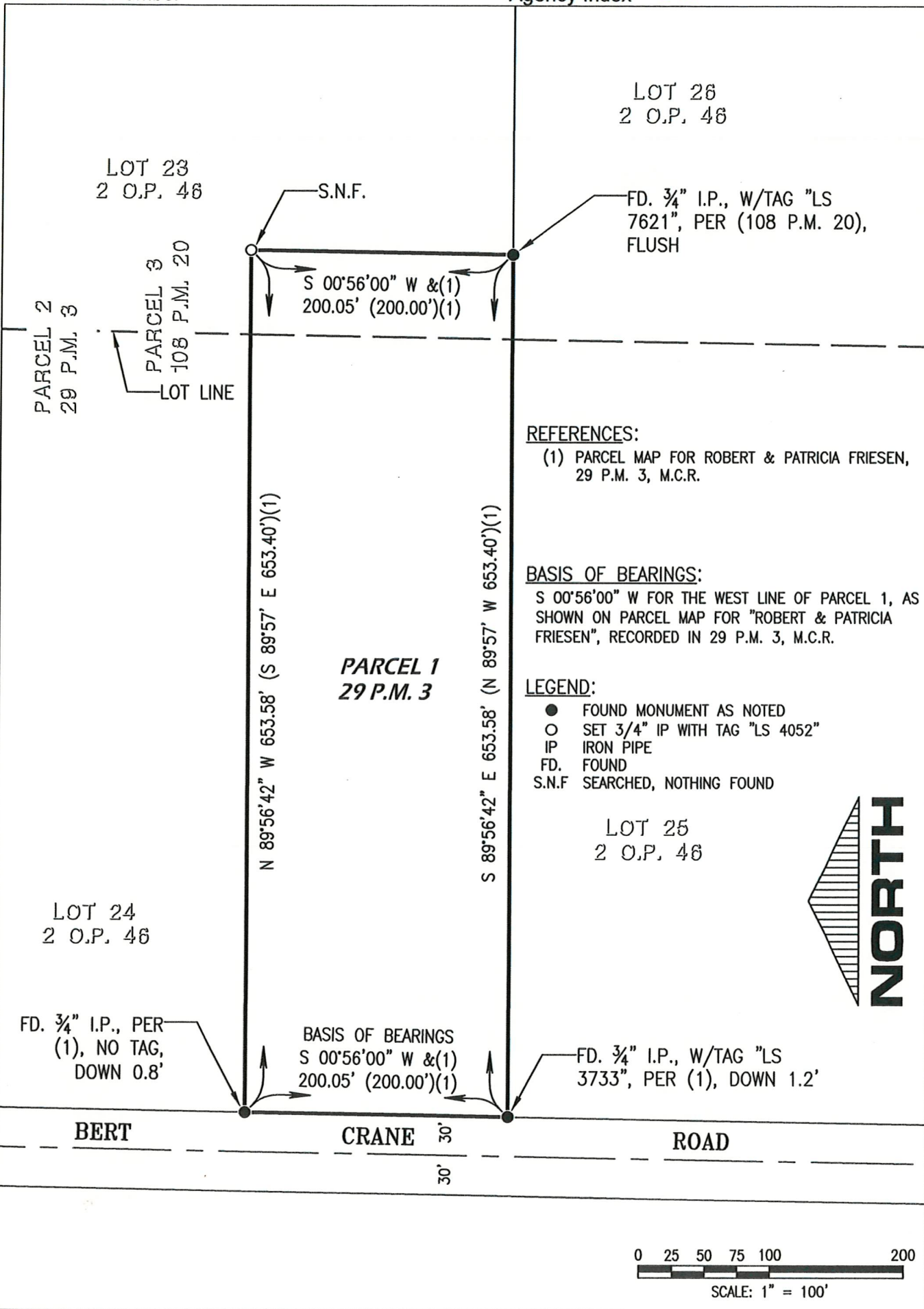


### COUNTY SURVEYOR'S STATEMENT

This Corner Record was received SEPTEMBER 12, 2019  
 and examined and filed SEPTEMBER 12, 2019  
 Signed Zach T. Janz P.L.S. or R.C.E. No. 8664  
 Title COUNTY SURVEYOR



County Surveyor's Comment



W:\land projects\18220 Ortega\18220 CORNER RECORD.dwg, 9/11/2019 4:14:34 PM, Samsung X4300 Series (192.168.1.141)