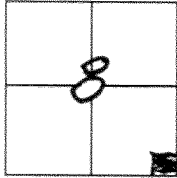


CORNER RECORD

Document Number 854-VV

City of _____ County of Merced, California

Brief Legal Description Lots 79 & 83 as shown on Vol 3 of O. P. Page 50, Merced County Records.



CORNER TYPE

Government Corner Control
 Meander Property
 Rancho Other

Date of Survey June 2011

COORDINATES(Optional)

N. _____
 E. _____
 Zone _____ NAD27 NAD83
 NAD83 Epoch _____
 Elev. _____
 Vert. NGVD29 NADV88
 Datu _____
 Mea Metric Imperial

Corner - Left as found Found and tagged Established Reestablished Rebuilt

Identification and type of corner found: Evidence used to identify or procedure used to establish or reestablish the corner:

Found and used nearby survey monuments that were associated with earlier surveys on Sullivan Road and Grove and Meredith Avenues. Also, found and used the redwood post remains on Lot 83.

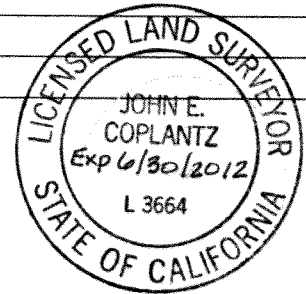
A description of the physical condition of the monument as found and as set or reset: _____

At all corners on Lots 79 & 83, I set a 1/2" x 24" iron pipe tagged LS 3664, down 12" below ground level.

SURVEYOR'S STATEMENT

This Corner Record was prepared by me or under my direction in conformance with the Land Surveyor's Act on Tuesday, December 13, 2011

Signed John E. Coplantz P.L.S. or R.C.E. No.: LS 3664
Exp. 06/30/2012



COUNTY SURVEYOR'S STATEMENT

This Corner Record was received, Dec. 15, 2011

and examined and filed January 3, 2012

Signed J. Steven Reichmuth P.L.S. or R.C.E. No.: 4895

Title Deputy County Surveyor

County Surveyor's Comment _____

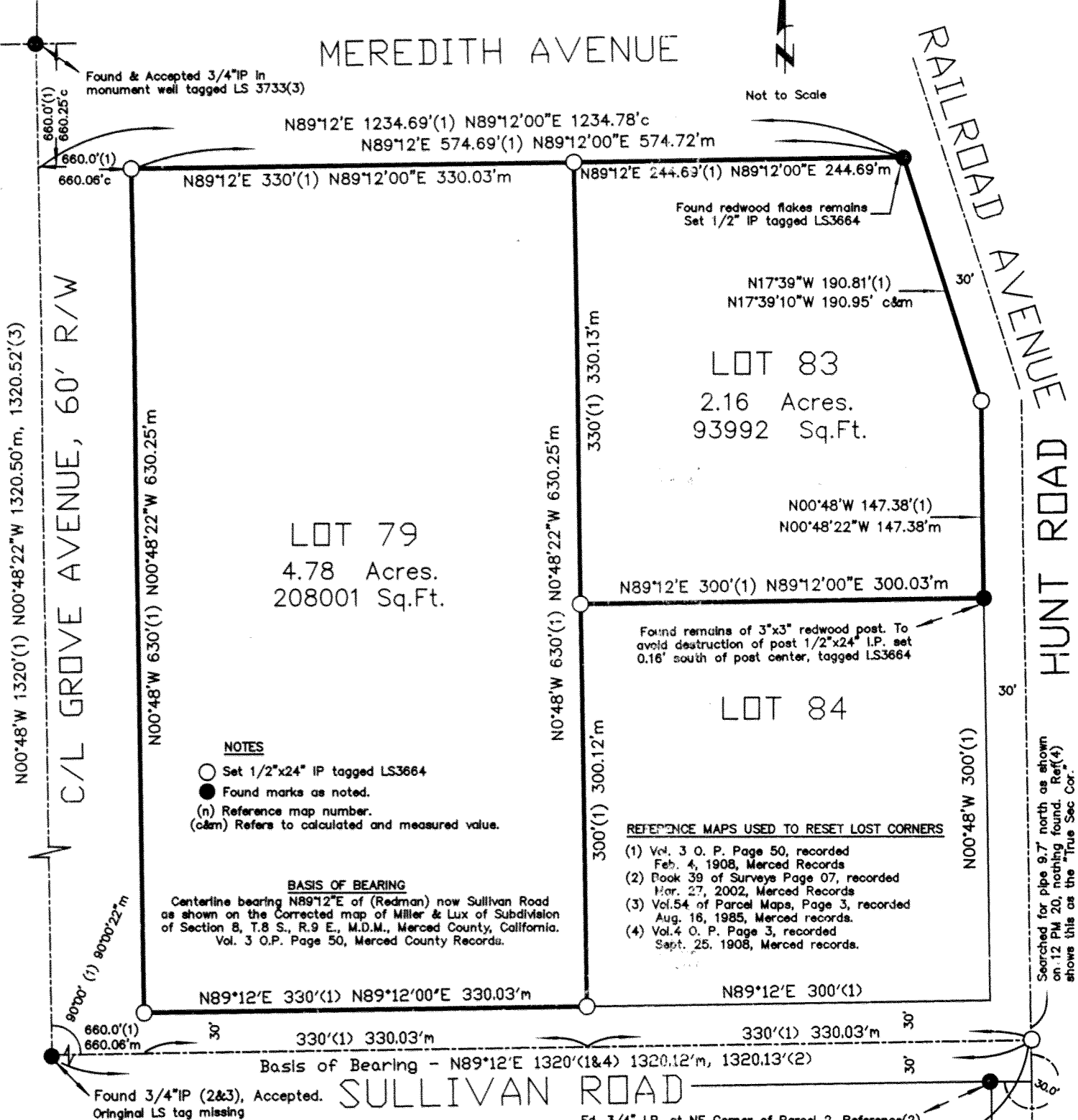


MEREDITH AVENUE

Not to Scale



RAILROAD AVENUE
HUNT ROAD



Found & Accepted 3/4" IP in monument well tagged LS 3733(3)

N89°12'E 1234.69'(1) N89°12'00"E 1234.78'c
N89°12'E 574.69'(1) N89°12'00"E 574.72'm

Found redwood flakes remains
Set 1/2" IP tagged LS3664

N17°39'W 190.81'(1)
N17°39'10"W 190.95' c.&m

LOT 83
2.16 Acres.
93992 Sq.Ft.

N00°48'W 147.38'(1)
N00°48'22"W 147.38'm

LOT 79
4.78 Acres.
208001 Sq.Ft.

N89°12'E 300'(1) N89°12'00"E 300.03'm

Found remains of 3"x3" redwood post. To avoid destruction of post 1/2"x24" I.P. set 0.16' south of post center, tagged LS3664

LOT 84

NOTES

- Set 1/2"x24" IP tagged LS3664
- Found marks as noted.
- (n) Reference map number.
- (c&m) Refers to calculated and measured value.

BASIS OF BEARING

Centerline bearing N89°12'E of (Redman) now Sullivan Road as shown on the Corrected map of Miller & Lux of Subdivision of Section 8, T.8 S., R.9 E., M.D.M., Merced County, California. Vol. 3 O.P. Page 50, Merced County Records.

REFERENCE MAPS USED TO RESET LOST CORNERS

- (1) Vol. 3 O. P. Page 50, recorded Feb. 4, 1908, Merced Records
- (2) Book 39 of Surveys Page 07, recorded Mar. 27, 2002, Merced Records
- (3) Vol.54 of Parcel Maps, Page 3, recorded Aug. 18, 1985, Merced records.
- (4) Vol.4 O. P. Page 3, recorded Sept. 25, 1908, Merced records.

N89°12'E 330'(1) N89°12'00"E 330.03'm

N89°12'E 300'(1)

330'(1) 330.03'm

330'(1) 330.03'm

Basis of Bearing - N89°12'E 1320'(1&4) 1320.12'm, 1320.13'(2)

SULLIVAN ROAD

Found 3/4" IP (2&3), Accepted. Original LS tag missing

Fd. 3/4" I.P. at NE Corner of Parcel 2, Reference(2)

On Ref(2), the 3/4" I.P. is missing at the centerlines intersection of Sullivan & Hunt Roads. Fd & accepted a nail 30.0' East & 30.0' North at the centerlines intersection of Sullivan & Hunt Roads. Set 1/2"x24" iron pipe flush, tagged LS 3664 at nail position.

Searched for pipe 9.7' north as shown on 12 PM 20, nothing found. Ref(4) shows this as the "True Sec Cor."

RESTORATION OF MISSING LOT CORNERS ON LOTS 79 AND LOT 83, AS SHOWN ON THE CORRECTED MAP of MILLER & LUX SUBDIVISION of SECTION 8, T.8 S., R.9 E. M.D.M. CALIFORNIA, VOL 3 O. P. PAGE 50, MERCED COUNTY RECORDS