

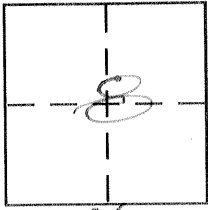
CORNER RECORD

Document Number 854 I

City of GUSTINE

County of MERCED, California

Brief Legal Description Lot 1 in Block 25, 3M 27



CORNER TYPE

- Government Corner Control
- Meander Property
- Rancho Other
- Date of Survey March 1999

COORDINATES (Optional)

N. _____
 E. _____
 Zone _____ NAD27 NAD83
 NAD83 Epoch _____
 Elev. _____
 Vert. Datum: NGVD29 NAVD88
 Meas. Units: Metric Imperial

Corner - Left as found Found and tagged Established Reestablished Rebuilt

Identification and type of corner found: Evidence used to identify or procedure used to establish or reestablish the corner:

At the northwest corner of Lot 1, ~~and~~ Block 25 as shown on the "Map of the Town of Gustine", recorded in Merced County Records in Volume 3 of Maps, page 27, I found redwood post remains (about 1 1/2" inch in diameter), -16 inches below top of and end of alley curbing done during the WPS days. I used the street monuments on Third and Sixth Street to verified block corner position.

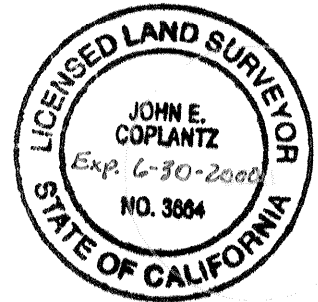
A description of the physical condition of the monument as found and as set or reset: _____

I set a 3/4" x 30" iron pipe with a plastic plug stamped LS 3664 on the west side of the redwood post

SURVEYOR'S STATEMENT

This Corner Record was prepared by me or under my direction in conformance with the Land Surveyor's Act on February 13, 2000

Signed John E. Coplantz P.L.S or R.C.E. No. 3664



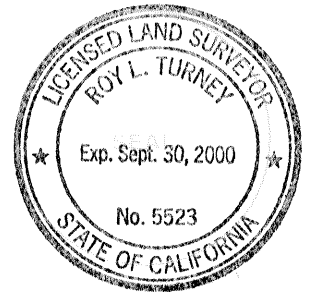
COUNTY SURVEYOR'S STATEMENT

This Corner Record was received FEB. 2000

and examined and filed FEB 22, 2000

Signed Roy L. Turney P.L.S or R.C.E. No. 5523

Title Dep. Co. Surveyor

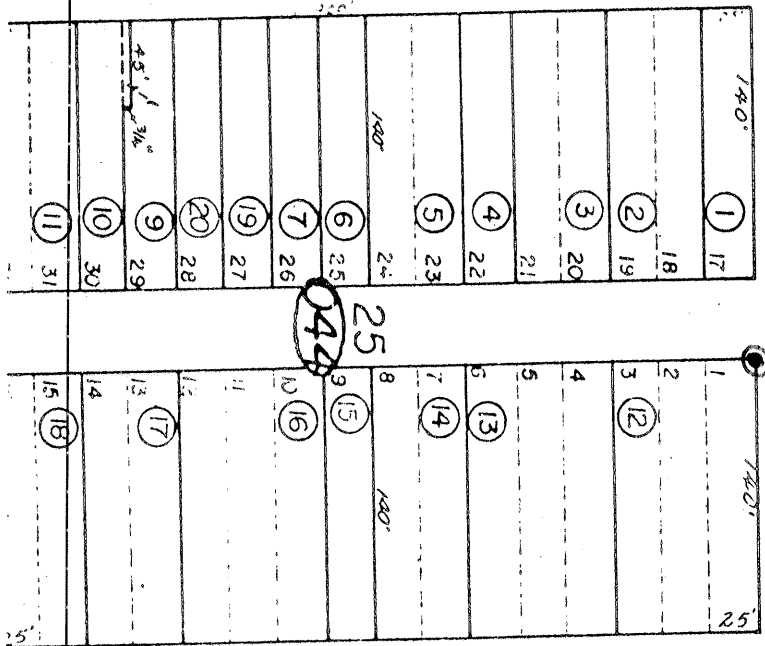


County Surveyor's Comment _____

Legend

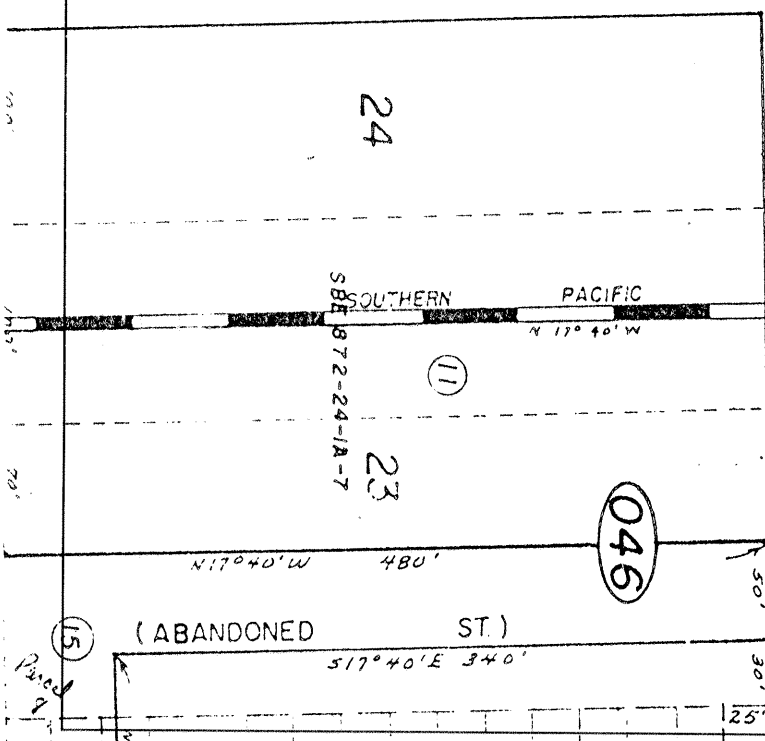
- Found street monuments
- ⊙ Set 3"x30" iron pipe on west side redwood post remains

FIFTH



044

STATE

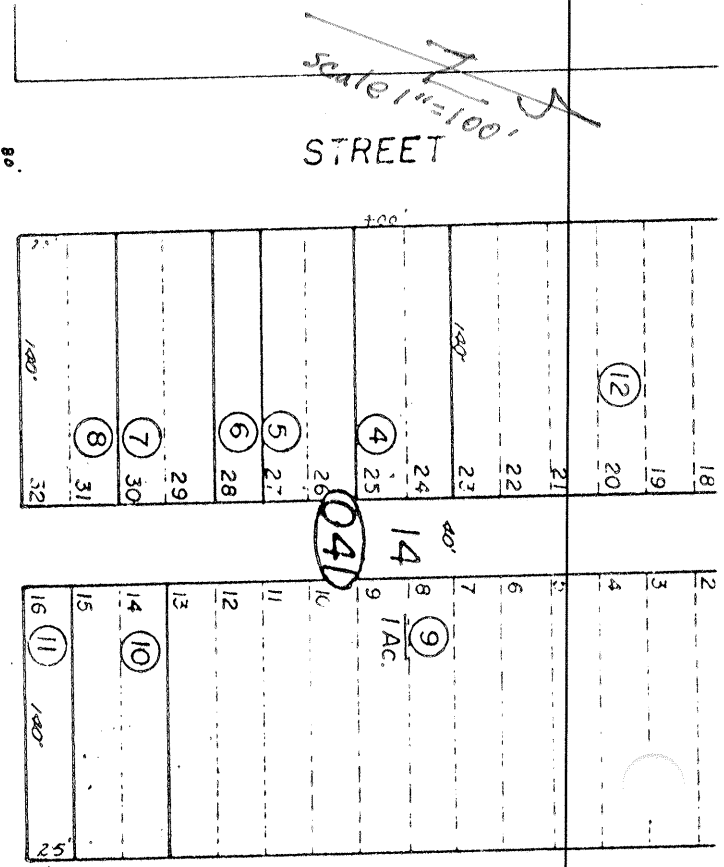


046

(ABANDONED ST.)

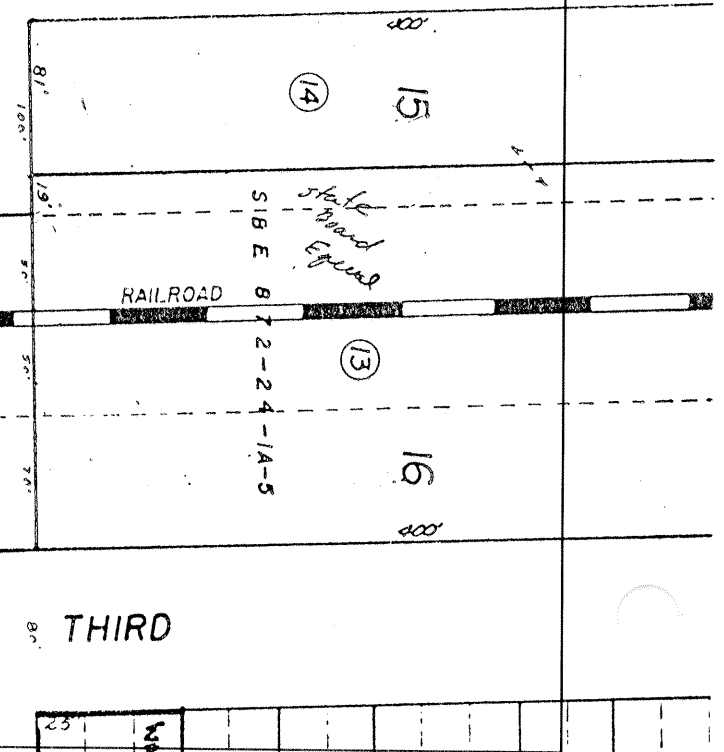
03

THIRD



scale 1"=100'

HWY



041

THIRD

RAILROAD

SIB E 87-24-1A-5

SBE 87-24-1A-6

SBE 87-24-1A-7

N 17° 40' W 480'

S 17° 40' E 340'

State Board Equal

Parcel 9

Worked

AK