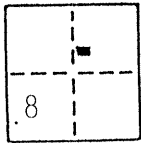


CORNER RECORD

COUNTY OF Merced T. 8 South R. 9 East Mount Diablo MERIDIAN CALIFORNIA
 CORNER TYPE: GOVT. CORNER MEANDER RANCHO CONTROL OTHER Block Corners
 CORNER IDENTIFICATION — DATE OF VISIT May 29, 1992



Block 30 of the Town of Gustine according to the Official Map thereof filed in Vol. 3 of Official Plats, Page 27, Merced County Records

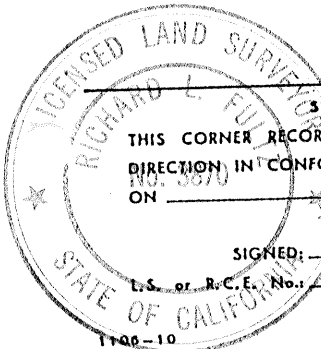
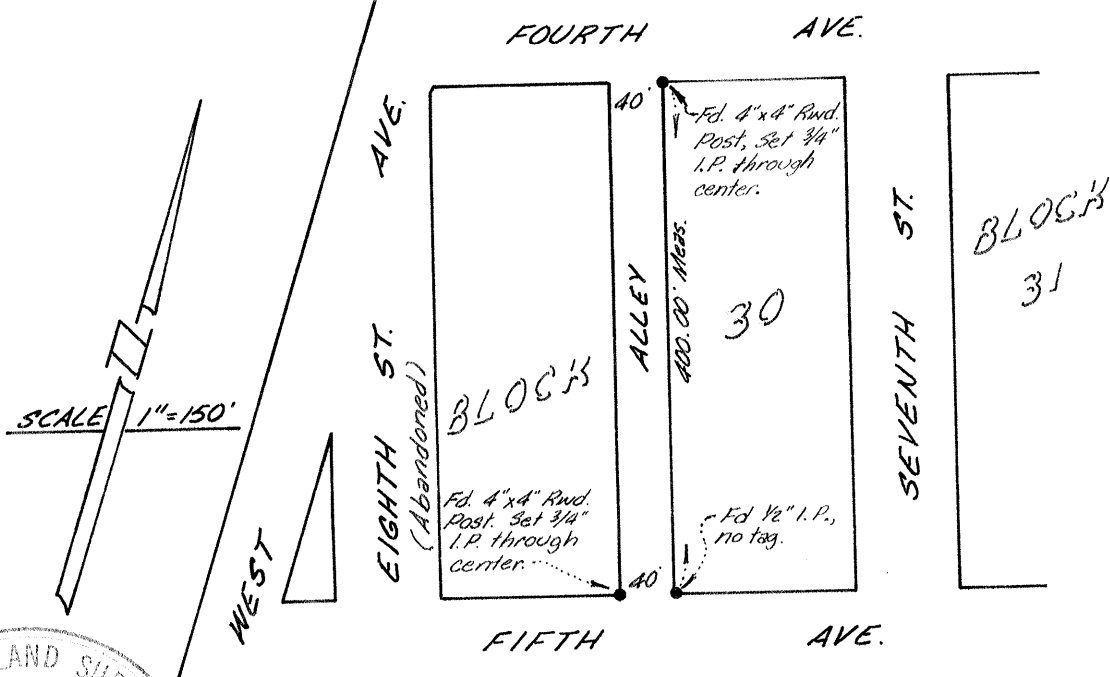
CORNER — LEFT AS FOUND FOUND AND TAGGED REESTABLISHED OBLITERATED CORNER REBUILT

PHYSICAL DESCRIPTION OF CORNER FOUND; EVIDENCE AND METHOD USED TO IDENTIFY OR REESTABLISH
 Found 4" x 4" Redwood Posts in Poor Condition, as indicated in sketch below.

PHYSICAL DESCRIPTION OF MONUMENTS REBUILT OR PERPETUATED
 3/4" Iron Pipe tagged L.S. 3870

CALIFORNIA COORDINATE SYSTEM ORDER: FIRST SECOND THIRD
 STATIONS USED: NGS (USC & GS) STATE COUNTY OTHER STATION _____ STATION _____
 ZONE _____ ELEVATION _____ NORTHINGS (Y) _____ EASTINGS (X) _____

SKETCH: (Include reference tie or witness points, remarks and topo of area)



SURVEYOR'S CERTIFICATE
 THIS CORNER RECORD WAS PREPARED BY ME OR UNDER MY DIRECTION IN CONFORMANCE WITH THE LAND SURVEYORS ACT ON June 4, 1992
 SIGNED: Richard L. Fultz
 L.S. 3870
 Expires 6/30/94
 SEAL

COUNTY SURVEYOR'S CERTIFICATE
 THE CORNER RECORD WAS RECEIVED 6-9-1992
 AND EXAMINED AND FILED 6-11-1992
 BY: Roy Turner
 TITLE: Deputy Co. Surveyor
 DOCUMENT No. 854-H
 STATEMENT ON BACK OF SHEET YES NO

