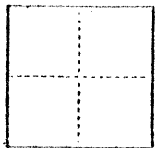


CORNER RECORD

CITY OF Merced T. 7 S R. 12 E M.D. MERIDIAN CALIFORNIA
CORNER TYPE: GOV'T. CORNER MEANDER RANCHO CONTROL OTHER subdivision
CORNER IDENTIFICATION — DATE OF VISIT 19



NE corner Lot 1, Blk. 9, Bloss Addition, Vol. 4, page 1,
Merced County Records

CORNER — LEFT AS FOUND FOUND AND TAGGED REESTABLISHED OBLITERATED CORNER REBUILT

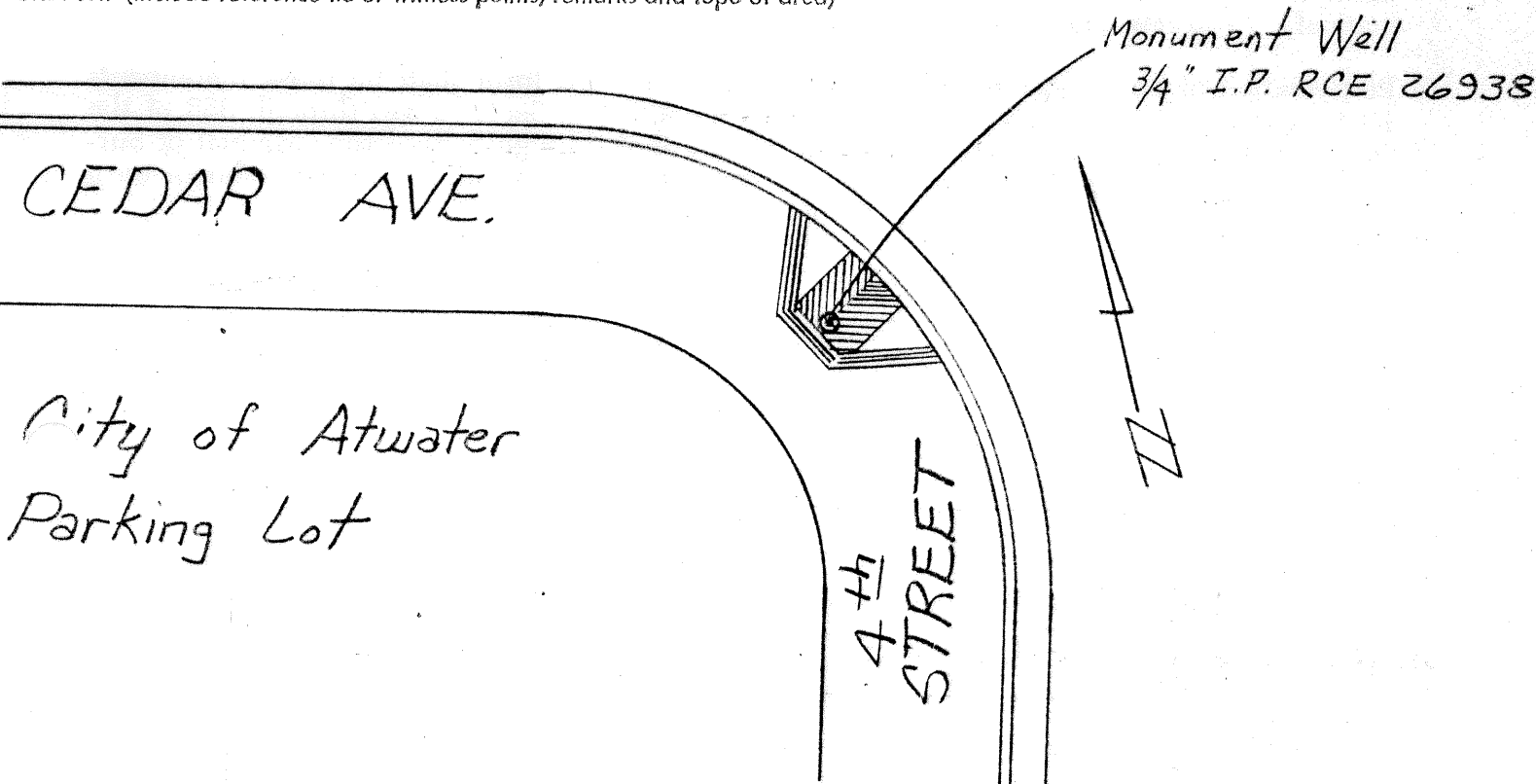
PHYSICAL DESCRIPTION OF CORNER FOUND; EVIDENCE AND METHOD USED TO IDENTIFY OR REESTABLISH
Found 3"x4" Redwood corner: NE corner Lot 1, Blk. 9, Bloss Addition.
Parking lot being constructed by City of Atwater; set 20', 40',
spreaders (nail & skiners) to reestablish exact position.

PHYSICAL DESCRIPTION OF MONUMENTS REBUILT OR PERPETUATED
set 3/4" Iron pipe, capped with RCE 26938 in monument well

CALIFORNIA COORDINATE SYSTEM ORDER: FIRST SECOND THIRD
STATIONS USED: NGS (USC & GS) STATE COUNTY OTHER STATION STATION
ZONE ELEVATION NORTHINGS (Y) EASTINGS (X)

(Fold)

SKETCH: (Include reference tie or witness points, remarks and topo of area)

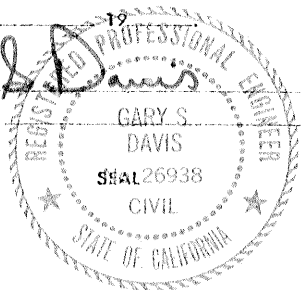


SURVEYOR'S CERTIFICATE

THIS CORNER RECORD WAS PREPARED BY ME OR UNDER MY DIRECTION IN CONFORMANCE WITH THE LAND SURVEYORS ACT OF Jan 2, 1986

SIGNED: Gary S. Davis

L.S. or P.C.E. No.: 26938



COUNTY SURVEYOR'S CERTIFICATE

THE CORNER RECORD WAS RECEIVED 1-10-1986 AND EXAMINED AND FILED 1-10-1986

BY: Roy Tamey
TITLE: Deputy County Surveyor

DOCUMENT No. 851-EE

STATEMENT ON BACK OF SHEET

YES NO