

# CORNER RECORD

Document Number 763 EE.

City of \_\_\_\_\_ County of MERCED, California

Brief Legal Description PROPERTY CORNER 370'± EAST OF NELANDER SECTION 23 T. 7 S. R. 10 E. MDM.



### CORNER TYPE

Government Corner  Control   
 Meander  Property   
 Rancho  Other   
 Date of Survey 2/4/92

### COORDINATES (Optional)

N. \_\_\_\_\_  
 E. \_\_\_\_\_  
 Zone \_\_\_\_\_ Datum \_\_\_\_\_  
 Elev. \_\_\_\_\_

Corner — Left as found  Found and tagged  Established  Reestablished  Rebuilt

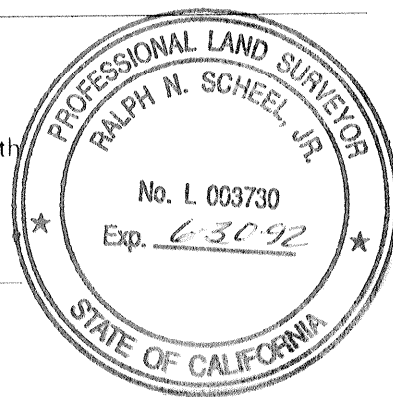
Identification and type of corner found: Evidence used to identify or procedure used to establish or reestablish the corner: PROPERTY CORNER - 3/4 INCH IRON PIPE ON N. SIDE OF ST. RT. 140 - SEE 19/PM/29 MEN. CO. RECORDS

A description of the physical condition of the monument as found and as set or reset: MONUMENT APPEARS TO BE IN GOOD CONDITION

### SURVEYOR'S STATEMENT

This Corner Record was prepared by me or under my direction in conformance with the Land Surveyors' Act on 2-4 1992.

Signed Ralph Scheel L.S. or R.C.E. Number 3730



### COUNTY SURVEYOR'S STATEMENT

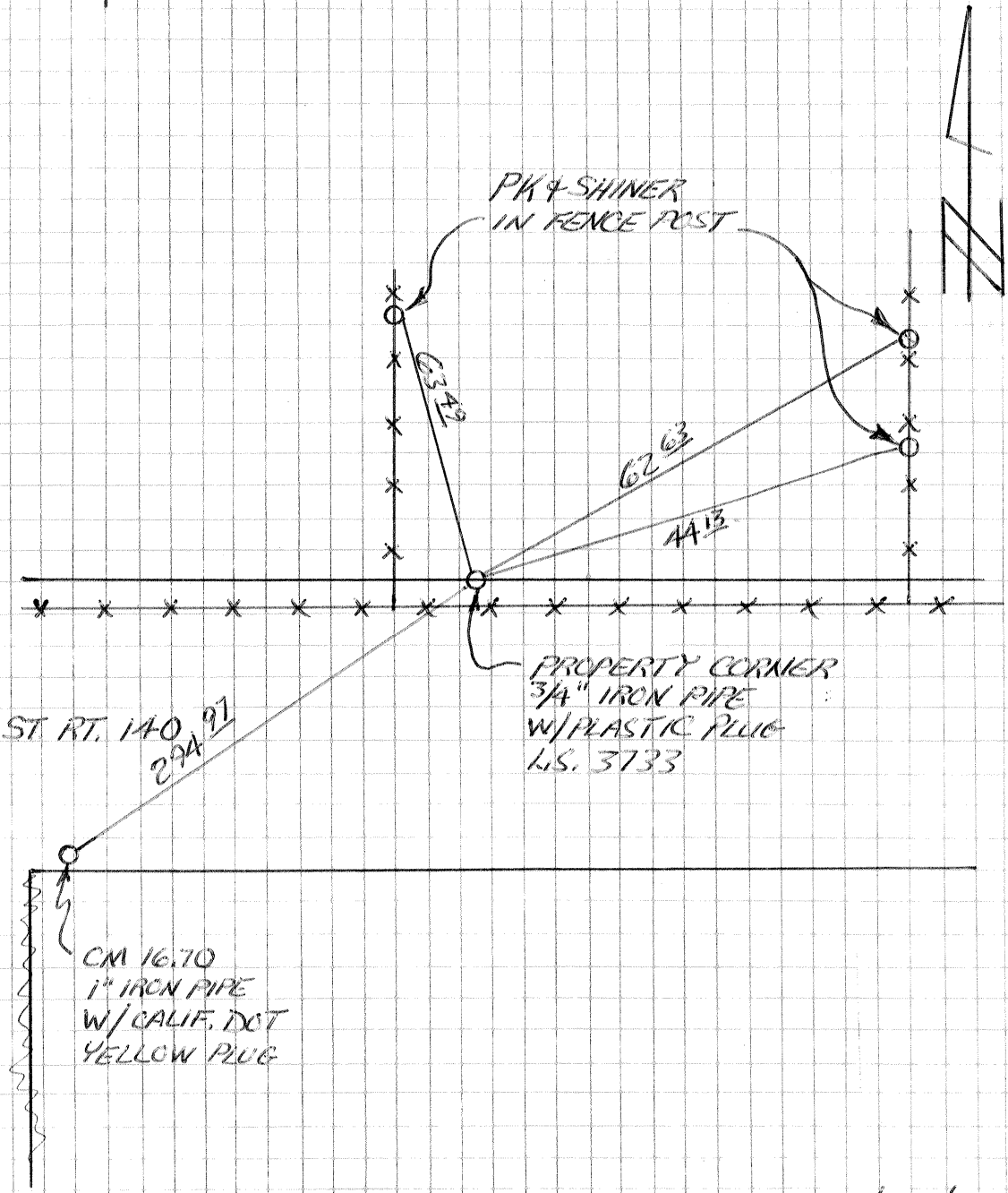
This Corner Record was received 3-13- 1992 and examined and filed 3-20- 1992.

Signed Roy L. Turney Title Dep. Co. Surveyor



County Surveyor's Comment \_\_\_\_\_

23



SEE: 19/PM/29