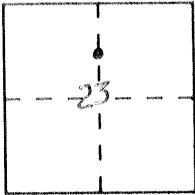


**CORNER RECORD**

Document Number 763-A & 763 AA.

City of \_\_\_\_\_ County of MERCED, California

Brief Legal Description PROPERTY CORNERS NEAR N. CENTER 1/4 SECTION 23, T.7S., R.10E., M.D.M.



**CORNER TYPE**

Government Corner  Control   
Meander  Property   
Rancho  Other   
Date of Survey 2/4/92

**COORDINATES (Optional)**

N. \_\_\_\_\_  
E. \_\_\_\_\_  
Zone \_\_\_\_\_ Datum \_\_\_\_\_  
Elev. \_\_\_\_\_

Corner — Left as found  Found and tagged  Established  Reestablished  Rebuilt

Identification and type of corner: Evidence used to identify or procedure used to establish or reestablish the corner: PROPERTY CORNERS - 3/4" IRON PIPES - SEE 19/PM/29, 20/RS/21 3/MAPS/9, MERCED COUNTY RECORDS

A description of the physical condition of the monument as found and as set or reset: MONUMENTS APPEAR TO BE IN GOOD CONDITIONS

**SURVEYOR'S STATEMENT**

This Corner Record was prepared by me or under my direction in conformance with the Land Surveyors' Act on 2-4 1992.

Signed Ralph Scheel L.S. or R.C.E. Number 3730

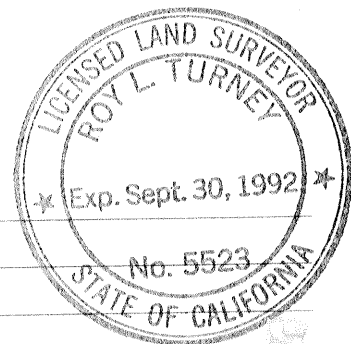


**COUNTY SURVEYOR'S STATEMENT**

This Corner Record was received 3-13- 1992 and examined and filed 3-20- 1992.

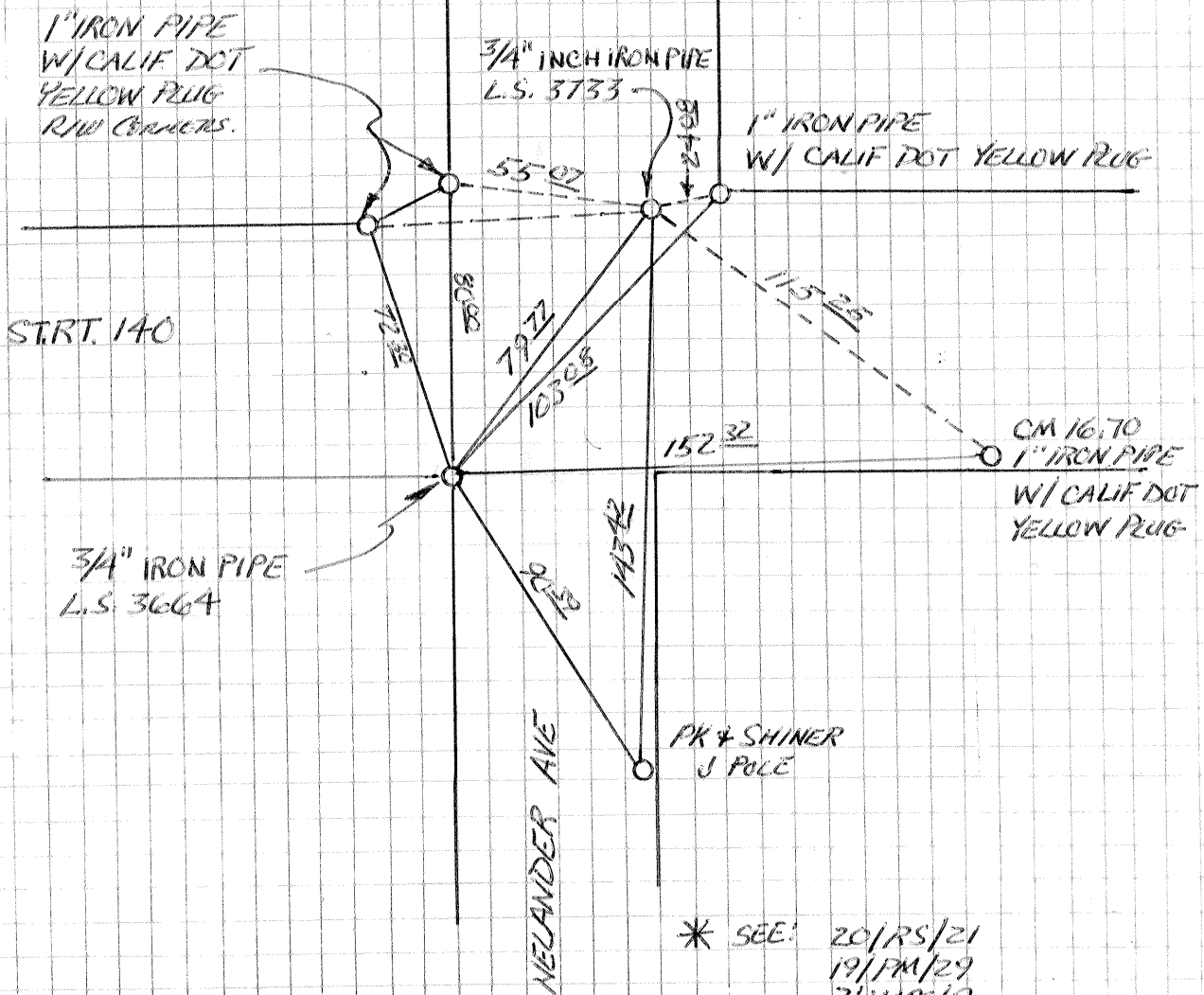
Signed Roy L. Tunney Title Dep. Co. Surveyor

County Surveyor's Comment \_\_\_\_\_



T. 75°, R. 10E., M.D.M.

23



\* SEE: 20/RS/21  
19/PM/29  
3/MWS/9