

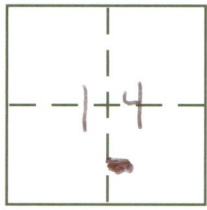
**CORNER RECORD**

Document Number 759-NN

City of \_\_\_\_\_

County of MERCED, California

Brief Legal Description PARCEL 2 5 P.M.S



**CORNER TYPE**

- Government Corner  Control
- Meander  Property
- Rancho  Other
- Date of Survey 5-8-12

**COORDINATES (Optional)**

N. \_\_\_\_\_  
 E. \_\_\_\_\_  
 Zone \_\_\_\_\_ NAD27  NAD83   
 NAD83 Epoch \_\_\_\_\_  
 Elev. \_\_\_\_\_  
 Vert. Datum: NGVD29  NAVD88   
 Meas. Units: Metric  Imperial

Corner - Left as found  Found and tagged  Established  Reestablished  Rebuilt

Identification and type of corner found: Evidence used to identify or procedure used to establish or reestablish the corner:

SEE SKETCH

A description of the physical condition of the monument as found and as set or reset:

SEE SKETCH

**SURVEYOR'S STATEMENT**

This Corner Record was prepared by me or under my direction in conformance with the Land Surveyor's Act on MAY 8 2012

Signed Michael S. Morris P.L.S or ~~P.C.E.~~ No. 8665



**COUNTY SURVEYOR'S STATEMENT**

This Corner Record was received June 12, 2012

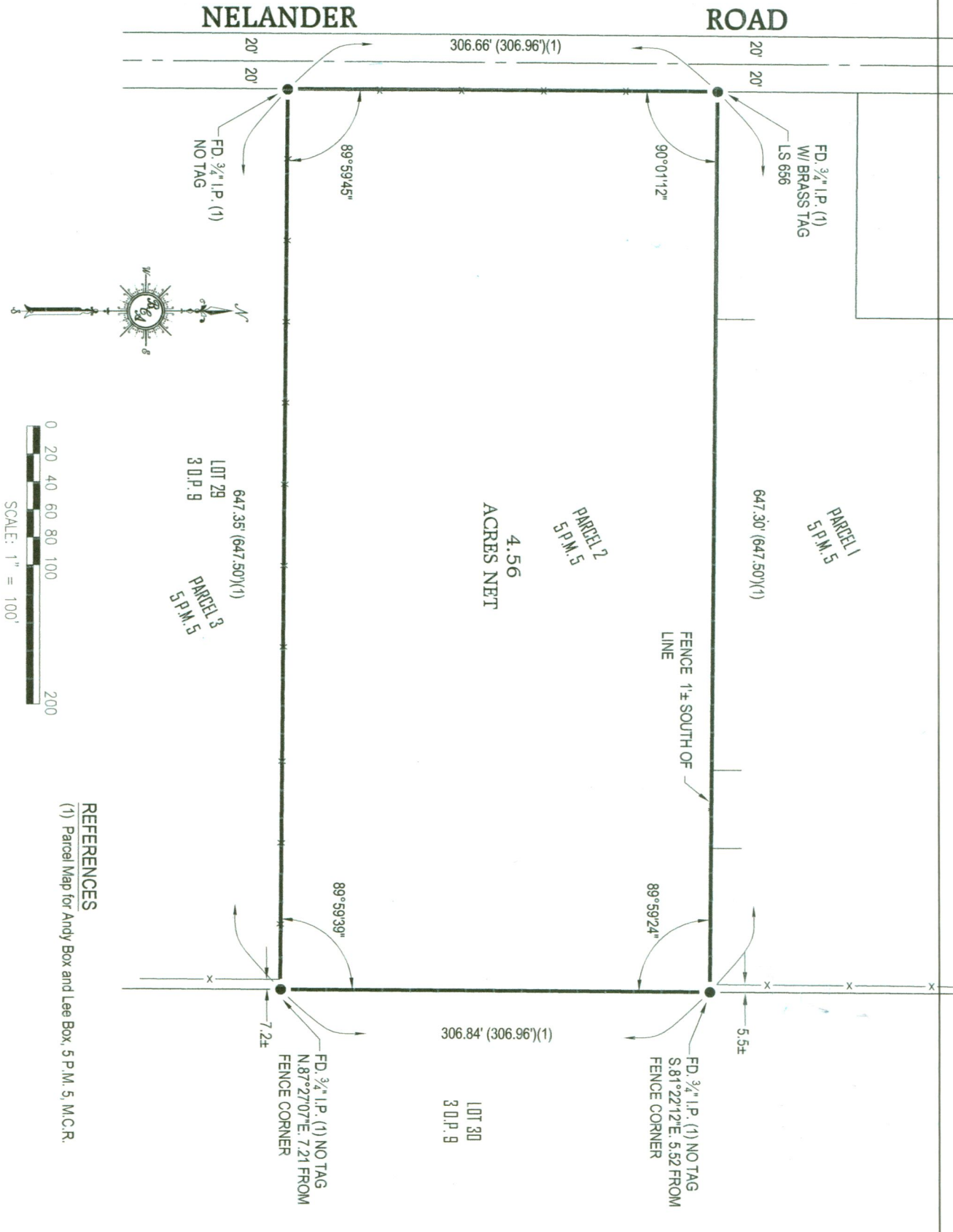
and examined and filed June 13, 2012

Signed J. Steven Reichmuth P.L.S or ~~P.C.E.~~ No. 4895

Title Acting County Surveyor



County Surveyor's Comment \_\_\_\_\_



**REFERENCES**  
 (1) Parcel Map for Andy Box and Lee Box, 5 P.M. 5, M.C.R.