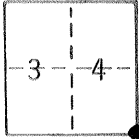


NO. 75

### CORNER RECORD

COUNTY OF MERCED T. 4 S. R. 12 E. MOUNT DIABLO MERIDIAN CALIFORNIA  
 CORNER TYPE: GOVT. CORNER  MEANDER  RANCHO  CONTROL  OTHER   
 CORNER IDENTIFICATION — DATE OF VISIT JULY 31, 19 75



S. E. CORNER, SECTION 34, T4S, R12E, MDB & M

CORNER — LEFT AS FOUND  FOUND AND TAGGED  REESTABLISHED OBLITERATED CORNER  REBUILT

PHYSICAL DESCRIPTION OF CORNER FOUND; EVIDENCE AND METHOD USED TO IDENTIFY OR REESTABLISH

FOUND ROTTED BASE OF LARGE GATE POST (SEE MERCED COUNTY SURVEY #747) WITH A PORTION OF A 2" X 3" POST AT EAST FACE.

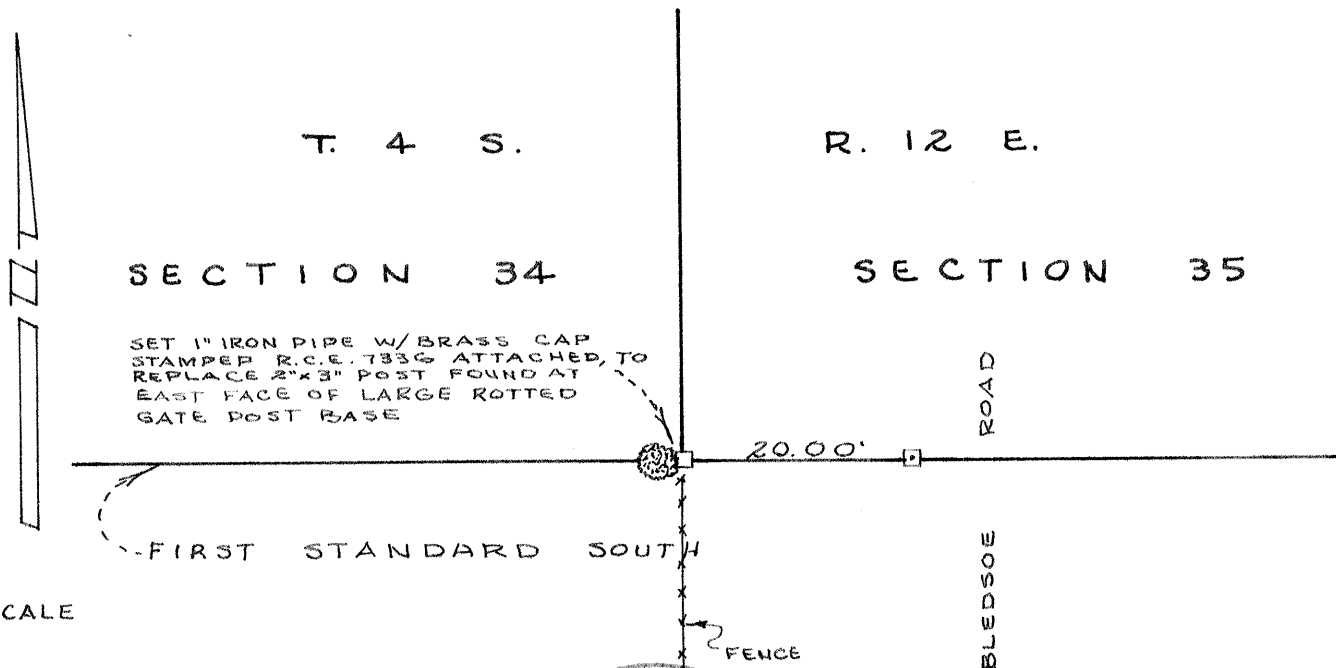
A 4" X 4" REDWOOD POST WITH SPIKE IN CENTER SETS 20.00' EAST ON LINE.

PHYSICAL DESCRIPTION OF MONUMENTS REBUILT OR PERPETUATED

1" IRON PIPE - 36" LONG WITH A 2" BRASS CAP DRIVEN IN TOP OF PIPE STAMPED R.C.E. 7336

CALIFORNIA COORDINATE SYSTEM ORDER: FIRST  SECOND  THIRD   
 STATIONS USED: NGS (USC & GS)  STATE  COUNTY  OTHER  STATION \_\_\_\_\_ STATION \_\_\_\_\_  
 ZONE \_\_\_\_\_ ELEVATION \_\_\_\_\_ NORTHINGS (Y) \_\_\_\_\_ EASTINGS (X) \_\_\_\_\_

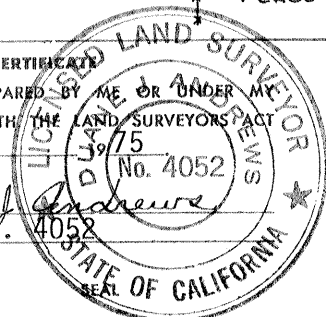
SKETCH: (Include reference tie or witness points, remarks and topo of area)



#### SURVEYOR'S CERTIFICATE

THIS CORNER RECORD WAS PREPARED BY ME OR UNDER MY DIRECTION IN CONFORMANCE WITH THE LAND SURVEYORS ACT ON August 25,

SIGNED: Duane J. Andrews  
 L.S. or R.C.E. No.: L. S. 4052



#### COUNTY SURVEYOR'S CERTIFICATE

THE CORNER RECORD WAS RECEIVED \_\_\_\_\_ 19\_\_\_\_ AND EXAMINED AND FILED \_\_\_\_\_ 19\_\_\_\_

BY: \_\_\_\_\_  
 TITLE: \_\_\_\_\_

DOCUMENT No. 747

STATEMENT ON BACK OF SHEET

YES  NO