

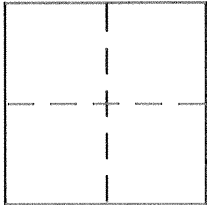
# CORNER RECORD

Document Number 726-X

City of DELHI

County of MERCED, California

Brief Legal Description E. COR LOT 2 & S. COR LOT 10, VOLUME 9, O.P., PAGE 39, M.C.R.



### CORNER TYPE

Government Corner  Control   
 Meander  Property   
 Rancho  Other   
 Date of Survey 11/1/01

### COORDINATES (Optional)

N. \_\_\_\_\_  
 E. \_\_\_\_\_  
 Zone \_\_\_\_\_ NAD27  NAD83   
 NAD83 Epoch \_\_\_\_\_  
 Elev. \_\_\_\_\_  
 Vert. Datum: NGVD29  NAVD88   
 Meas. Units: Metric  Imperial

Corner – Left as found  Found and tagged  Established  Reestablished  Rebuilt

Identification and type of corner found: Evidence used to identify or procedure used to establish or reestablish the corner:

SEE OTHER SIDE

A description of the physical condition of the monument as found and as set or reset:

SEE OTHER SIDE

### SURVEYOR'S STATEMENT

This Corner Record was prepared by me or under my direction in conformance with the Land Surveyor's Act on JUNE 15 2002

Signed R. K. Granata (P.L.S. or R.C.E. No. 6944)



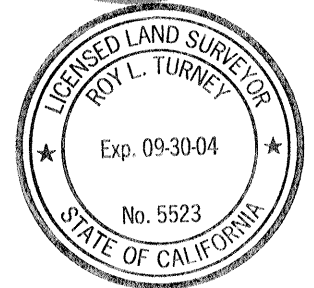
### COUNTY SURVEYOR'S STATEMENT

This Corner Record was received JULY 1 - 2002

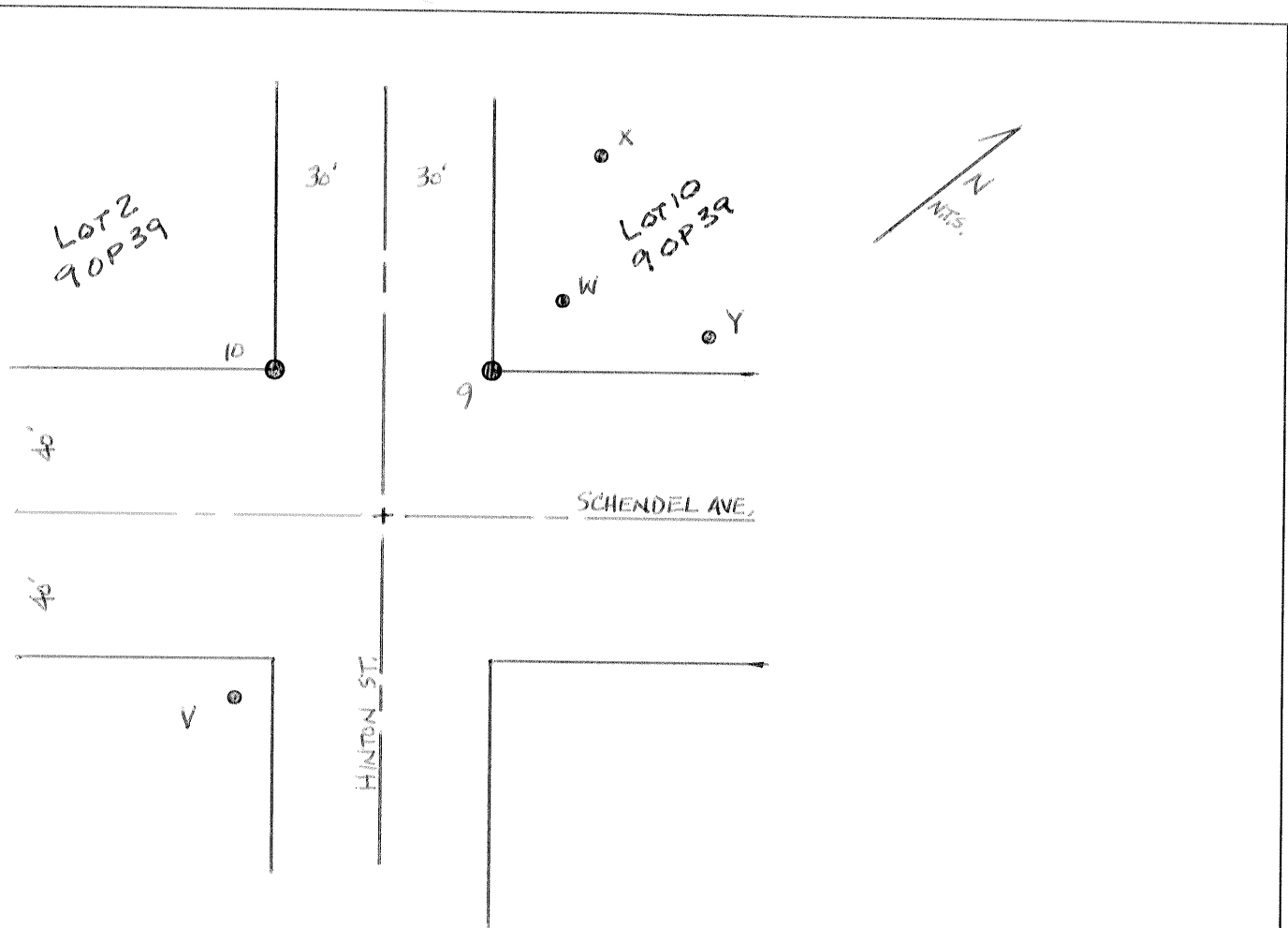
and examined and filed JULY 15, 2002

Signed Roy L. Turney P.L.S. or R.C.E. No. 5523

Title Dep. Co. Surveyor



County Surveyor's Comment \_\_\_\_\_



- 9 - SET  $\frac{3}{4}$ " I.P., NO TAG, DOWN  $1\frac{1}{2}$ ';  $6\frac{5}{8}$ ' NW OF  $\frac{1}{4}$ ' OF NW EDGE OF TELE. POLE WITH 3 GUY WIRES NW INTO GROUND. THIS PIPE WAS RESET USING SWING TIES FROM COUNTY CORNER RECORD 726 W
- 10 - FD.  $\frac{3}{4}$ " I.P., RCE 10990, DOWN  $1\frac{1}{2}$ ';  $0\frac{6}{8}$ ' EAST OF EAST EDGE OF POST FOR 6' CH. LK. FENCES SW; NW AT EAST COR. OF SCHOOL.
- V - SET  $\frac{1}{2}$ " REBAR (LEANING E $\pm$ ) DOWN  $0\frac{7}{8}$ ';  $3\frac{6}{8}$ ' SE AND  $1\frac{5}{8}$ ' SW OF P.I. OF WHITE PICKET FENCES SE AND SW
- W - SET CHIS. "X" ON NORTH COR. OF "WATER BOX"; FLOSH IN GRASS, 6' SW OF "CALVARY TEMPLE BAPTIST CHURCH" SIGN
- X - SET SMALL CHIS. "X" NEAR  $\frac{1}{4}$ ' OF S END OF 4' CONC. WALK AT SW COR. OF CHURCH BLDG. (NEAR LARGEST OF 2 PALM TREES)
- Y - SET  $\frac{3}{4}$ " I.P., "GIVES CONTROL PT." TAG, DOWN  $0\frac{6}{8}$ '; 3' NW OF A GUY THAT GOES NE TO A NEWER SERVICE PILE WHICH IS  $30' \pm$  EAST  $\pm$  OF SE COR. OF CHURCH BLDG.