

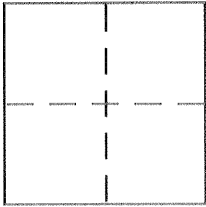
# CORNER RECORD

Document Number 726-U

City of DEW

County of MERCED, California

Brief Legal Description W. COR. PARCEL 4, BOOK 7, PARCEL MAPS, PAGE 48, M.C.R.



### CORNER TYPE

Government Corner  Control   
 Meander  Property   
 Rancho  Other   
 Date of Survey 11/1/01

### COORDINATES (Optional)

N. \_\_\_\_\_  
 E. \_\_\_\_\_  
 Zone \_\_\_\_\_ NAD27  NAD83   
 NAD83 Epoch \_\_\_\_\_  
 Elev. \_\_\_\_\_  
 Vert. Datum: NGVD29  NAVD88   
 Meas. Units: Metric  Imperial

Corner - Left as found  Found and tagged  Established  Reestablished  Rebuilt

Identification and type of corner found: Evidence used to identify or procedure used to establish or reestablish the corner:

SEE OTHER SIDE

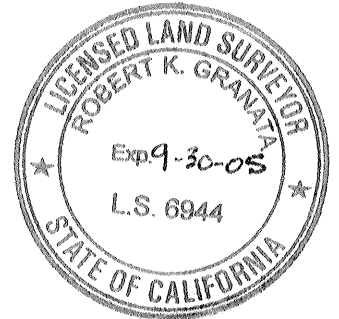
A description of the physical condition of the monument as found and as set or reset:

SEE OTHER SIDE

### SURVEYOR'S STATEMENT

This Corner Record was prepared by me or under my direction in conformance with the Land Surveyor's Act on JUNE 15 2002

Signed R. K. Grant (P.L.S. or R.C.E. No. 6944)



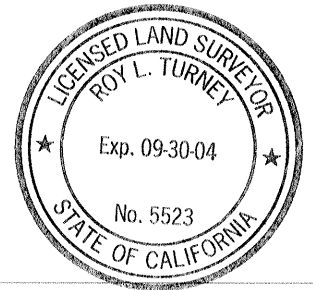
### COUNTY SURVEYOR'S STATEMENT

This Corner Record was received JUNE 20, 2002

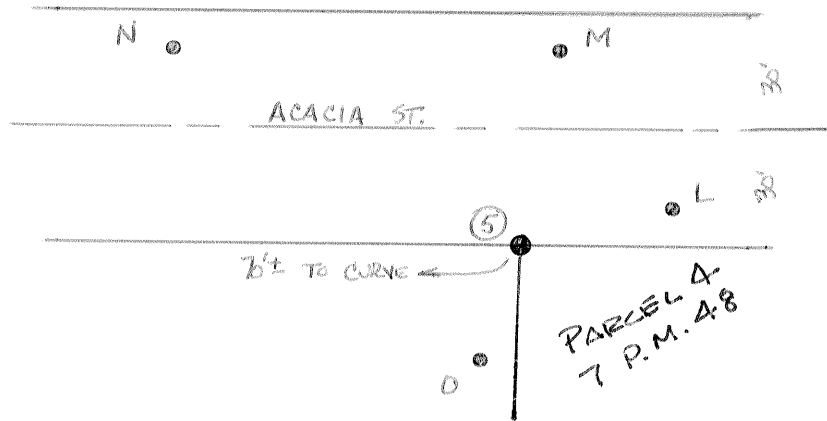
and examined and filed JULY 15, 2002

Signed Roy L. Turney P.L.S. or R.C.E. No. 5523

Title Dep. Co. Surveyor



County Surveyor's Comment \_\_\_\_\_



- 5 - FD. 1" IP, NO TAG, UP 0.6'; 1' NW AND 0.5' SW OF NW END WHITE RAIL FENCE NEAR SW R OF HOUSE # 16067
- L - SET CHIS. "1/4" ON T.C.; 1' ± NE OF NE END OF CONC. DRINEWAY TO HOUSE # 16067
- M - SET CHIS. "1/4" ON T.C.; OPP. POWER POLE NEAR SW EDGE OF CONC. DRINE TO FIRE STATION.
- N - SET CHIS. "1/4" ON T.C.; NEAR SW END OF CURB AND GUTTER. CHIS. MARK IS 35' SW OF SW END OF SMALL DRINEWAY NW TO FENCED AREA FOR ELECTRICAL CONTROL BOXES AND 1 POWER POLE
- O - SET MAG NAIL IN A.C.; 0.9' NW OF POST AT NE END OF OPENING IN 4' CH. LK. FENCE LEADING TO CHURCH PARKING LOT

