

CORNER RECORD

Document Number 726-LLL
County of MERCED, California

City of _____

Brief Legal Description PROPERTY CORNER WEST SIDE OF SHANKS ROAD APPROXIMATELY 336'± SOUTH OF THE CENTERLINE OF LETTEAU AVENUE, LOCATED IN SECTION 8, T.6S, R.11E M.D.B.&M.

NW 1/4	● NE 1/4
SW 1/4	SE 1/4

SEC.8 T6S, R11E

CORNER TYPE

Government Corner Control
 Meander Property
 Rancho Other

Date of Survey 6-14-2012

COORDINATES (Optional)

N _____
 E _____
 Zone _____ NAD27 NAD83
 NAD83 Epoch _____
 Elev. _____
 Vert. Datum: NVGD29 NVGD88
 Meas. Units: Metric Imperial

Corner— Left as found Found and tagged Established Reestablished Rebuilt

Identification and type of corner found: Evidence used to identify or procedure used to establish or reestablish the corner:
FOUND 1" IRON PIPE NOT TAGGED, ON THE WEST SIDE OF SHANKS ROAD APPROXIMATELY 336'± SOUTH OF THE CENTERLINE OF LETTEAU AVENUES, LOCATED IN SECTION 8, T.6S, R.11E, M.D.B.&M. FOUND MONUMENT AS SHOWN ON PARCEL MAP FILED IN BOOK 5 OF PARCEL MAPS AT PAGE 3, MERCED COUNTY RECORDS.

A description of the physical condition of the monument as found and as set or reset: _____
MONUMENT IS IN AN AREA OF RECONSTRUCTION, FOUND TIES AS SHOWN ON PAGE 2.

SURVEYOR'S STATEMENT

This Corner Record was prepared by me or under my direction in conformance with the Land Surveyors' Act on AUGUST 6, , 2012 ,



Signed [Signature] P.L.S. or R.C.E. Number 6953

COUNTY SURVEYOR'S STATEMENT

This Corner Record was received August 29 , 2012 and examined _____
 and filed Sept. 4 , 2012

Signed [Signature] P.L.S. or R.C.E. No: 4895

Title Acting County Surveyor

County Surveyor's Comment _____

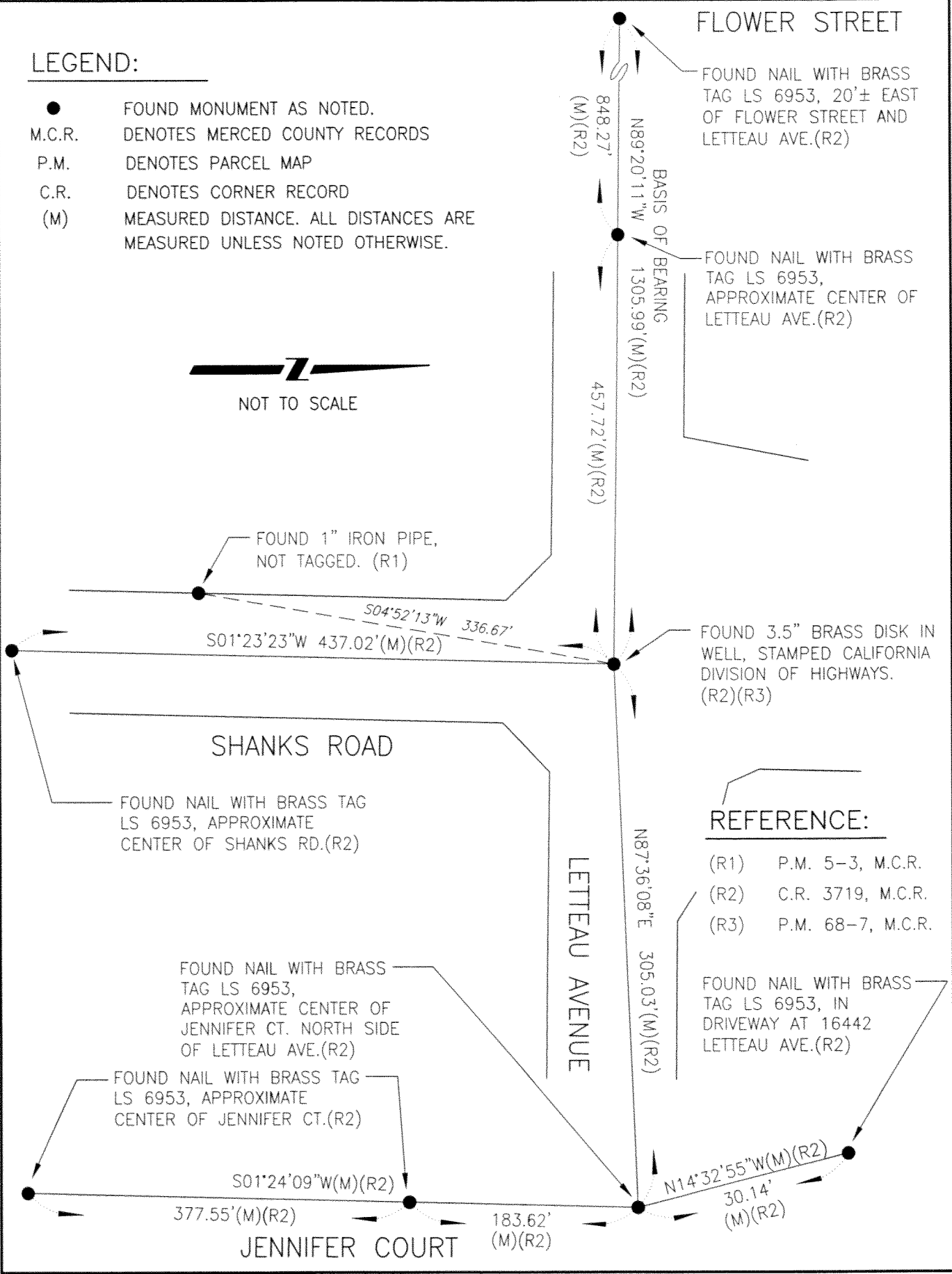


LEGEND:

- FOUND MONUMENT AS NOTED.
- M.C.R. DENOTES MERCED COUNTY RECORDS
- P.M. DENOTES PARCEL MAP
- C.R. DENOTES CORNER RECORD
- (M) MEASURED DISTANCE. ALL DISTANCES ARE MEASURED UNLESS NOTED OTHERWISE.



NOT TO SCALE



REFERENCE:

- (R1) P.M. 5-3, M.C.R.
- (R2) C.R. 3719, M.C.R.
- (R3) P.M. 68-7, M.C.R.

FOUND NAIL WITH BRASS TAG LS 6953, IN DRIVEWAY AT 16442 LETTEAU AVE.(R2)