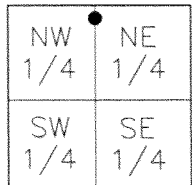


CORNER RECORD

Document Number 726-KKK
County of MERCED, California

City of _____

Brief Legal Description APPARENT FRONT LOT CORNERS FOR LOTS 1, 2, 3, 4 AND 5 OF LYNNVERLY ACRES ON THE EAST SIDE OF SHANKS ROAD, LOCATED IN SECTION 8, T.6S, R.11E M.D.B.&M.



SEC.8 T6S, R11E

CORNER TYPE

Government Corner Control
 Meander Property
 Rancho Other

Date of Survey 6-14-2012

COORDINATES (Optional)

N _____
 E _____
 Zone _____ NAD27 NAD83
 NAD83 Epoch _____
 Elev. _____
 Vert. Datum: NVGD29 NVGD88
 Meas. Units: Metric Imperial

Corner- Left as found Found and tagged Established Reestablished Rebuilt

Identification and type of corner found: Evidence used to identify or procedure used to establish or reestablish the corner:
FOUND FIVE (5) 3/4" IRON PIPE NOT TAGGED ON THE EAST SIDE OF SHANKS ROAD AT THE APPARENT FRONT LOT CORNERS FOR LOTS 1, 2, 3, 4 AND 5 OF LYNNVERLY ACRES, LOCATED IN SECTION 8, T.6S, R11E, M.D.B.&M. FOUND MONUMENTS AS SHOWN ON RECORD MAP FILED IN BOOK 15 OF OFFICIAL PLATS AT PAGE 3, MERCED COUNTY RECORDS.

A description of the physical condition of the monument as found and as set or reset: _____
MONUMENTS ARE IN AN AREA OF RECONSTRUCTION, FOUND TIES AS SHOWN ON PAGE 2.

SURVEYOR'S STATEMENT

This Corner Record was prepared by me or under my direction in conformance with the Land Surveyors' Act on AUGUST 6, 2012,



Signed [Signature] P.L.S. or R.C.E. Number 6953

COUNTY SURVEYOR'S STATEMENT

This Corner Record was received August 29, 2012 and examined and filed Sept. 4, 2012

Signed [Signature] P.L.S. or R.C.E. No: 4895

Title Acting County Surveyor

County Surveyor's Comment _____



LEGEND:

- FOUND MONUMENT AS NOTED.
- M.C.R. DENOTES MERCED COUNTY RECORDS
- O.P. DENOTES OFFICIAL PLAT
- C.R. DENOTES CORNER RECORD
- P.M. DENOTES PARCEL MAP
- (M) MEASURED DISTANCE. ALL DISTANCES ARE MEASURED UNLESS NOTED OTHERWISE.



FLOWER STREET

FOUND NAIL WITH BRASS TAG LS 6953, 20'± EAST OF FLOWER STREET AND LETTEAU AVE.(R2)

FOUND NAIL WITH BRASS TAG LS 6953, APPROXIMATE CENTER OF LETTEAU AVE.(R2)

LINE TABLE		
LINE	BEARING	LENGTH
L1	S32°32'34"E	53.43'
L2	S12°31'05"E	123.85'
L3	S06°37'45"E	212.98'
L4	S04°13'07"E	302.98'
L5	S02°54'46"E	393.49'

SHANKS ROAD

FOUND NAIL WITH BRASS TAG LS 6953, APPROXIMATE CENTER OF SHANKS RD.(R2)

FOUND 3.5" BRASS DISK IN WELL, STAMPED CALIFORNIA DIVISION OF HIGHWAYS. (R2)(R3)

REFERENCE:

- (R1) O.P. 15-3, M.C.R.
- (R2) C.R. 3719, M.C.R.
- (R3) P.M. 68-7, M.C.R.

FOUND NAIL WITH BRASS TAG LS 6953, IN DRIVEWAY AT 16442 LETTEAU AVE.(R2)

LETTEAU AVENUE

FOUND NAIL WITH BRASS TAG LS 6953, APPROXIMATE CENTER OF JENNIFER CT. NORTH SIDE OF LETTEAU AVE.(R2)

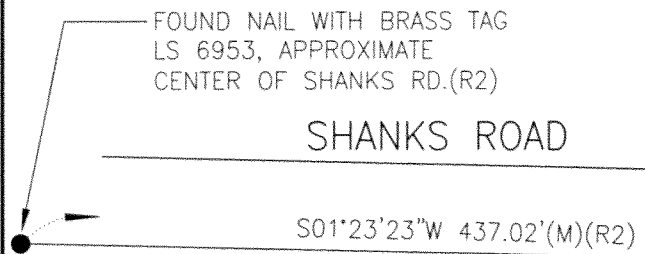
FOUND NAIL WITH BRASS TAG LS 6953, APPROXIMATE CENTER OF JENNIFER CT.(R2)

JENNIFER COURT

377.55'(M)(R2)

183.62'(M)(R2)

N14°32'55"W(M)(R2)
30.14'(M)(R2)



LYNNEVERLY ACRES

FOUND 3/4" IRON PIPE, NOT TAGGED. (R1)