

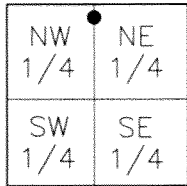
# CORNER RECORD

Document Number 726-KKK (2)

City of \_\_\_\_\_

County of MERCED, California

Brief Legal Description APPARENT FRONT LOT CORNER FOR LOT 1 OF LYNNVERLY ACRES ON THE EAST SIDE OF SHANKS ROAD, LOCATED IN SECTION 8, T.6S, R.11E M.D.B.&M.



SEC.8 T6S, R11E

### CORNER TYPE

Government Corner  Control   
 Meander  Property   
 Rancho  Other

Date of Survey 01-07-2013

### COORDINATES (Optional)

N \_\_\_\_\_  
 E \_\_\_\_\_  
 Zone \_\_\_\_\_ NAD27  NAD83   
 NAD83 Epoch \_\_\_\_\_  
 Elev. \_\_\_\_\_  
 Vert. Datum: NVGD29  NVGD88   
 Meas. Units: Metric  Imperial

Corner- Left as found  Found and tagged  Established  Reestablished  Rebuilt

Identification and type of corner found: Evidence used to identify or procedure used to establish or reestablish the corner:  
SET MAG NAIL WITH BRASS TAG STAMPED L.S. 6953 ON THE EAST SIDE OF SHANKS ROAD AT THE APPARENT FRONT LOT CORNER FOR LOT 1 OF LYNNVERLY ACRES, LOCATED IN SECTION 8, T.6S, R11E, M.D.B.&M. MONUMENT WAS DESTROYED DURING CONSTRUCTION. FOUND WITNESS CORNERS AS SHOWN ON CORNER RECORD DOCUMENT NUMBER 726-KKK, MERCED COUNTY RECORDS.

A description of the physical condition of the monument as found and as set or reset:  
SET MAG NAIL WITH BRASS TAG STAMPED L.S. 6953 FROM TIES AS SHOWN ON PAGE 2.

### SURVEYOR'S STATEMENT

This Corner Record was prepared by me or under my direction in conformance with the Land Surveyors' Act on JANUARY 14, 2013,

Signed [Signature] P.L.S. or R.C.E. Number 6953



### COUNTY SURVEYOR'S STATEMENT

This Corner Record was received JANUARY 23, 2013 and examined and filed JANUARY 30, 2013

Signed [Signature] P.L.S. or R.C.E. No: 4895

Title Acting County Surveyor

County Surveyor's Comment \_\_\_\_\_



**LEGEND:**

- ⊗ SET MONUMENT AS NOTED
- FOUND MONUMENT AS NOTED.
- M.C.R. DENOTES MERCED COUNTY RECORDS
- O.P. DENOTES OFFICIAL PLAT
- C.R. DENOTES CORNER RECORD
- (M) MEASURED DISTANCE. ALL DISTANCES ARE MEASURED UNLESS NOTED OTHERWISE.



**FLOWER STREET**

FOUND NAIL WITH BRASS TAG LS 6953, 20'± EAST OF FLOWER STREET AND LETTEAU AVE.(R2)(R3)

FOUND NAIL WITH BRASS TAG LS 6953, APPROXIMATE CENTER OF LETTEAU AVE.(R2)(R3)

LINE TABLE		
LINE	BEARING	LENGTH
L1	S32°32'34"E	53.43'(M)(R3)
L2	S12°31'05"E	123.85'(M)(R3)
L3	S06°37'45"E	212.98'(M)(R3)
L4	S04°13'07"E	302.98'(M)(R3)
L5	S02°54'46"E	393.49'(M)(R3)

**SHANKS ROAD**

FOUND NAIL WITH BRASS TAG LS 6953, APPROXIMATE CENTER OF SHANKS RD.(R2)(R3)

FOUND BRASS DISK STAMPED L.S. 6953 IN MONUMENT WELL.

SET MAG NAIL WITH BRASS TAG LS 6953 IN WALK.

**REFERENCE:**

- (R1) O.P. 15-3, M.C.R.
- (R2) C.R. 3719, M.C.R.
- (R3) C.R. 726-KKK, M.C.R.

FOUND NAIL WITH BRASS TAG LS 6953, IN DRIVEWAY AT 16442 LETTEAU AVE.(R2)(R3)

FOUND NAIL WITH BRASS TAG LS 6953, APPROXIMATE CENTER OF JENNIFER CT. NORTH SIDE OF LETTEAU AVE.(R2)(R3)

FOUND NAIL WITH BRASS TAG LS 6953, APPROXIMATE CENTER OF JENNIFER CT.(R2)(R3)

S01°24'09"W(M)(R2)(R3)

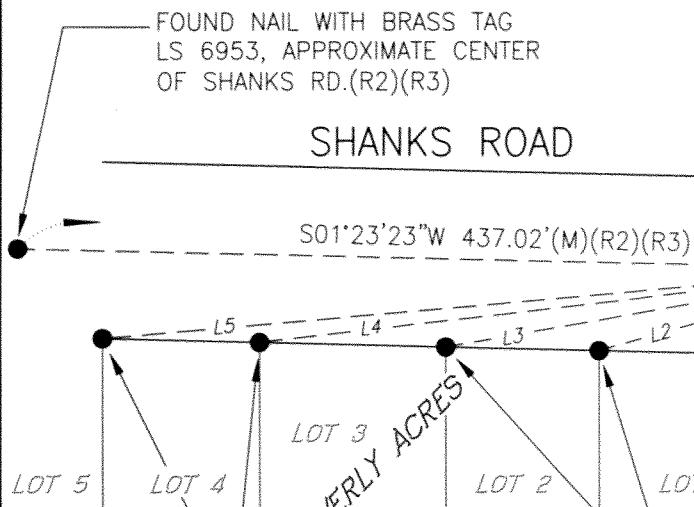
377.55'(M)(R2)(R3) 183.62'(M)(R2)(R3)

**JENNIFER COURT**

**LETTEAU AVENUE**

N87°36'08"E 305.03'(M)(R2)(R3)

N14°32'55"W(M) 30.14'(M)(R2)(R3)



LYNNEVERLY ACRES

FOUND 3/4" IRON PIPE, NOT TAGGED. (R1)(R3)