

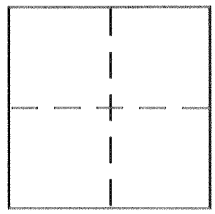
**CORNER RECORD**

Document Number 726-J

City of DELHI

County of MERCED, California

Brief Legal Description CENTERLINE & RIGHT OF WAY MONUMENTS FOR 470P19, 330P11, 370P46



**CORNER TYPE**

Government Corner  Control   
Meander  Property   
Rancho  Other   
Date of Survey 11/1/01

**COORDINATES (Optional)**

N. \_\_\_\_\_  
E. \_\_\_\_\_  
Zone \_\_\_\_\_ NAD27  NAD83   
NAD83 Epoch \_\_\_\_\_  
Elev. \_\_\_\_\_  
Vert. Datum: NGVD29  NAVD88   
Meas. Units: Metric  Imperial

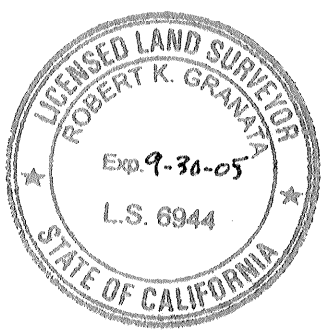
Corner -- Left as found  Found and tagged  Established  Reestablished  Rebuilt

Identification and type of corner found: Evidence used to identify or procedure used to establish or reestablish the corner:  
SEE OTHER SIDE

A description of the physical condition of the monument as found and as set or reset:  
SEE OTHER SIDE

**SURVEYOR'S STATEMENT**

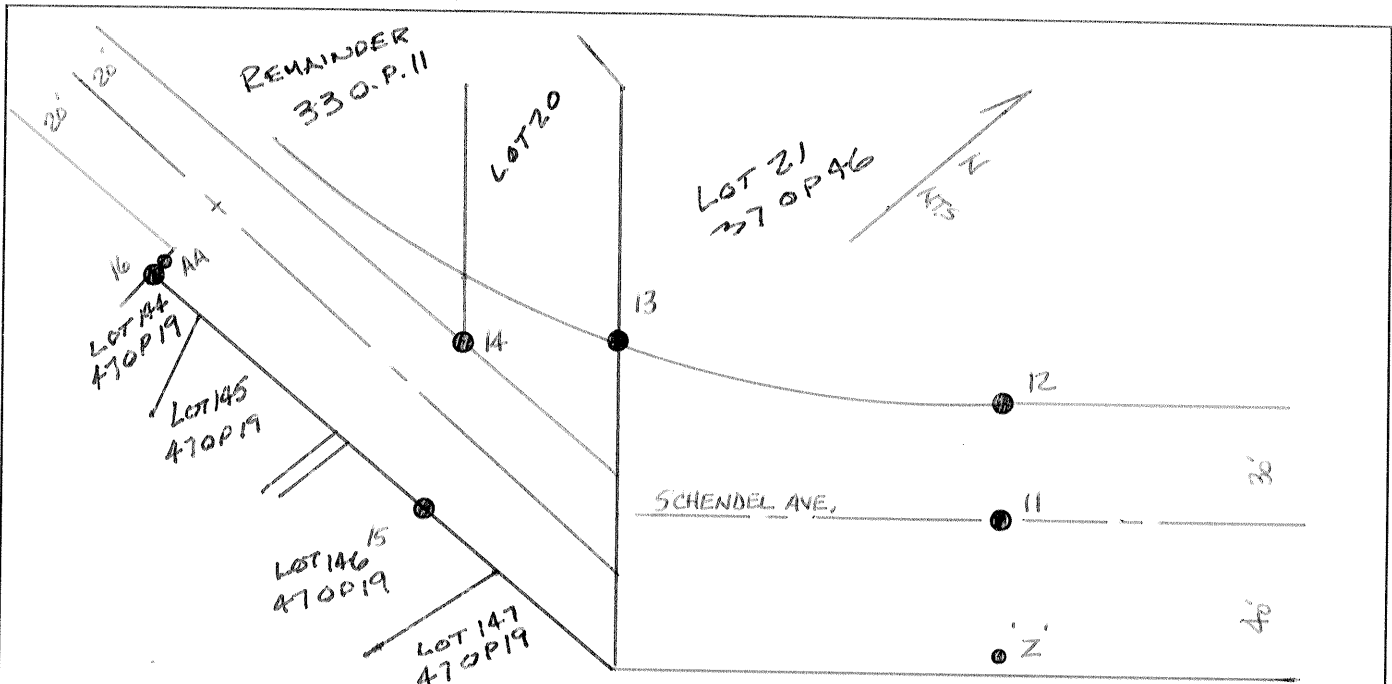
This Corner Record was prepared by me or under my direction in conformance with the Land Surveyor's Act on JUNE 15 2002  
Signed Robert K. Granata (P.L.S. or R.C.E. No. 6944)



**COUNTY SURVEYOR'S STATEMENT**

This Corner Record was received JUNE 20, 2002  
and examined and filed JULY 15 2002  
Signed Ray Tunney P.L.S. or R.C.E. No. 5523  
Title Dep. Co. Surveyor

County Surveyor's Comment \_\_\_\_\_  
\_\_\_\_\_  
\_\_\_\_\_



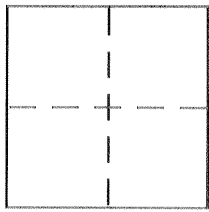
- 11 - FD. 3/4" I.P., LS 5122 (TACK IN TAG FOR REF. PT.) IN MON. BOX; 20' SE OF FACE OF CURB AT NE END OF CURVE IN CURB & GUTTER
- 12 - FD. 3/4" I.P., LS 5122, DOWN 1'; 10' NW OF FACE OF CURB AT NE END OF CURVE IN CURB & GUTTER
- 13 - FD. 3/4" I.P., LS 5122, DOWN 0.1'; 0.1' SW OF COR. OF 6' CH. LK. FENCE (WITH PLASTIC SLATS) NW & NE OPP. SW END CURB & GUTTER & SIDEWALK
- 14 - FD. 3/4" I.P. WITH COUPLING ON TOP, NO TAG, DOWN 1.4'; 18.2' SW OF POST AT S COR. OF CURBRT, 25.5' SE OF S± COR. OF HOUSE
- 15 - FD. 1/2" I.P., LS 4876 (TACK IN TAG FOR REF. PT.) DOWN 0.4'; AT N EDGE POST AT ANGLE PT. IN 6' WOOD FENCES W & E
- 16 - FD. 3/4" I.P., LS 4876 (TACK IN TAG FOR REF. PT.) DOWN 1.2'; 10' S OF FACE OF CURB AT W END OF CURVE IN CURB & GUTTER (6.5' W OF ST. LT.)
- Z - SET 3/4" I.P., "GIVES CONTROL PT." TAG, DOWN 1'; ON LINE 12-11 EXTENDED SE; 38.00' SE OF # 11; 2.3' NW OF POST FOR 3.5' WOOD FENCE NE, 6' WOOD FENCE SE
- AA - SET CHIS. "1" AT 1' N OF BACK OF WALK AT W END OF CURVE IN CURB & GUTTER (6.00' N OF # 16)

# CORNER RECORD

Document Number 726-J  
County of MERCED, California

City of DELHI

Brief Legal Description SEE PAGE 1 OF 6



### CORNER TYPE

Government Corner  Control   
 Meander  Property   
 Rancho  Other   
 Date of Survey 11/1/01

### COORDINATES (Optional)

N. \_\_\_\_\_  
 E. \_\_\_\_\_  
 Zone \_\_\_\_\_ NAD27  NAD83   
 NAD83 Epoch \_\_\_\_\_  
 Elev. \_\_\_\_\_  
 Vert. Datum: NGVD29  NAVD88   
 Meas. Units: Metric  Imperial

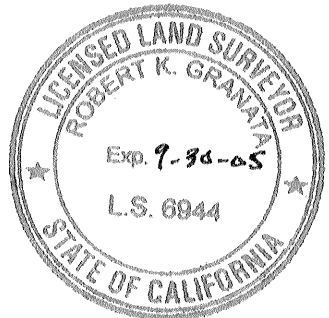
Corner - Left as found  Found and tagged  Established  Reestablished  Rebuilt

Identification and type of corner found: Evidence used to identify or procedure used to establish or reestablish the corner:  
SEE PAGE 2 OF 6

A description of the physical condition of the monument as found and as set or reset:  
SEE PAGE 2 OF 6

### SURVEYOR'S STATEMENT

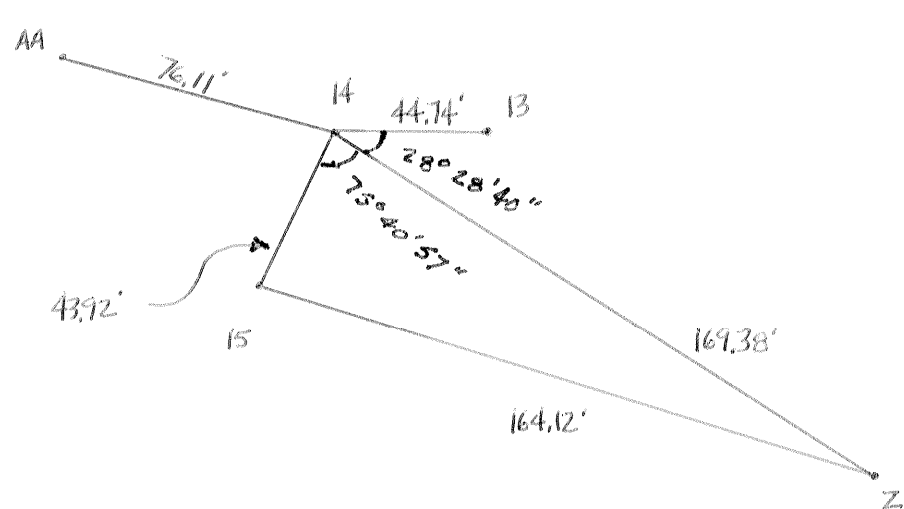
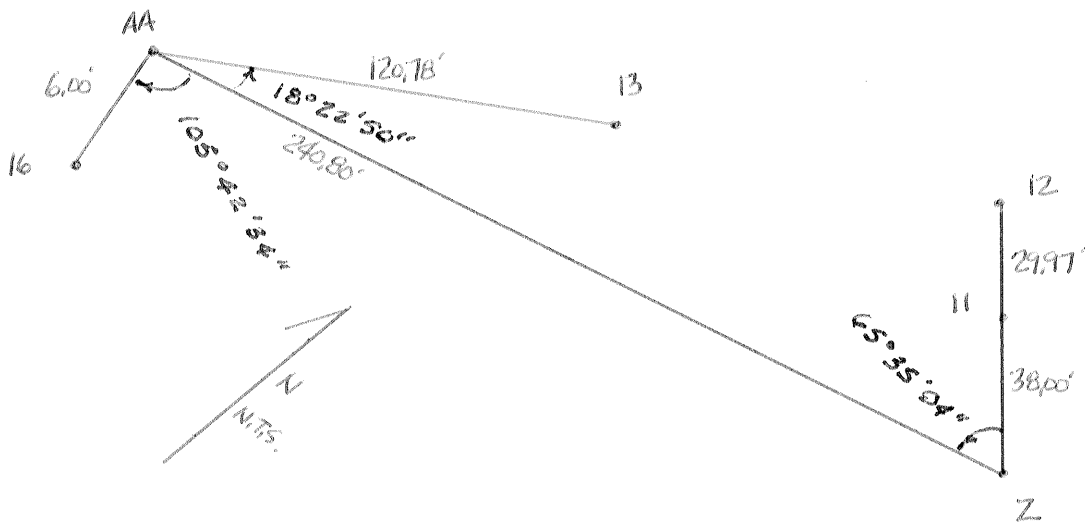
This Corner Record was prepared by me or under my direction in conformance with the Land Surveyor's Act on JUNE 15 2002  
 Signed R.K. Grant P.L.S. or R.C.E. No. 6944



### COUNTY SURVEYOR'S STATEMENT

This Corner Record was received June 20, 2002  
 and examined and filed July 15, 2002  
 Signed Gay D. Tunney P.L.S. or R.C.E. No. 5523  
 Title Dep. Co. Surveyor

County Surveyor's Comment \_\_\_\_\_

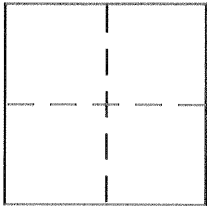


**CORNER RECORD**

Document Number 726-J  
County of MERCED, California

City of DELHI

Brief Legal Description SEE PAGE 1 OF 6



**CORNER TYPE**

Government Corner  Control   
Meander  Property   
Rancho  Other   
Date of Survey 11/1/01

**COORDINATES (Optional)**

N. \_\_\_\_\_  
E. \_\_\_\_\_  
Zone \_\_\_\_\_ NAD27  NAD83   
NAD83 Epoch \_\_\_\_\_  
Elev. \_\_\_\_\_  
Vert. Datum: NGVD29  NAVD88   
Meas. Units: Metric  Imperial

Corner - Left as found  Found and tagged  Established  Reestablished  Rebuilt

Identification and type of corner found: Evidence used to identify or procedure used to establish or reestablish the corner:

SEE PAGE 2 OF 6

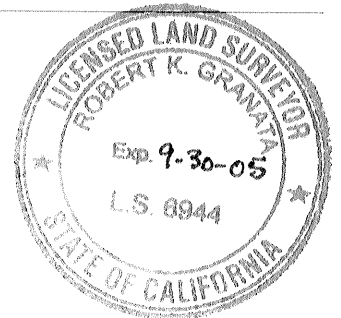
A description of the physical condition of the monument as found and as set or reset:

SEE PAGE 2 OF 6

**SURVEYOR'S STATEMENT**

This Corner Record was prepared by me or under my direction in conformance with the Land Surveyor's Act on JUNE 15 2002

Signed Robert K. Granata P.L.S. or R.C.E. No. 6944



**COUNTY SURVEYOR'S STATEMENT**

This Corner Record was received June 20, 2002

and examined and filed July 15, 2002

Signed Ray Turner P.L.S. or R.C.E. No. 5523

Title Dep. Co. Surveyor

County Surveyor's Comment \_\_\_\_\_

