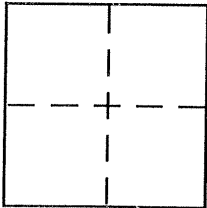


CORNER RECORD

Document Number 726-J-11
City of DELHI County of MERCED, California

Brief Legal Description CENTERLINE MONUMENT FOR SCHENDEL AVENUE AT
BEGINNING OF CURVE SHOWN ON 37 O.P. 46, MERCED COUNTY RECORDS



CORNER TYPE

Government Corner Control
Meander Property
Rancho Other
Date of Survey July 29, 2003

COORDINATES (Optional)

N. _____
E. _____
Zone _____ NAD27 NAD83
NAD83 Epoch _____
Elev. _____
Vert. Datum: NGVD29 NAVD88
Meas. Units: Metric Imperial

Corner - Left as found Found and tagged Established Reestablished Rebuilt

Identification and type of corner found: Evidence used to identify or procedure used to establish or reestablish the corner:

SEE OTHER SIDE

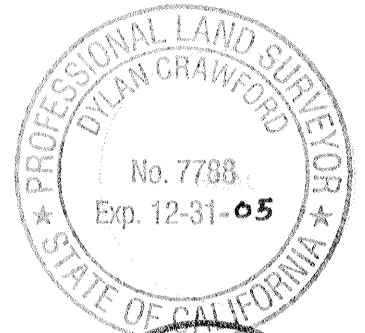
A description of the physical condition of the monument as found and as set or reset:

SEE OTHER SIDE

SURVEYOR'S STATEMENT

This Corner Record was prepared by me or under my direction in conformance with the Land Surveyor's Act on OCTOBER 3 2003

Signed Dylan Crawford P.L.S or R.C.E. No. 7788

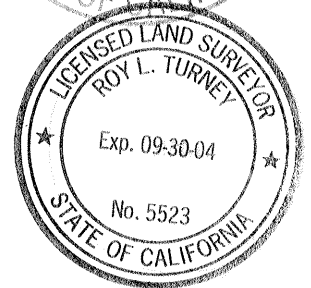


COUNTY SURVEYOR'S STATEMENT

This Corner Record was received OCTOBER 7, 2003
and examined and filed OCTOBER 8, 2003

Signed Roy Turney P.L.S or R.C.E. No. 5523

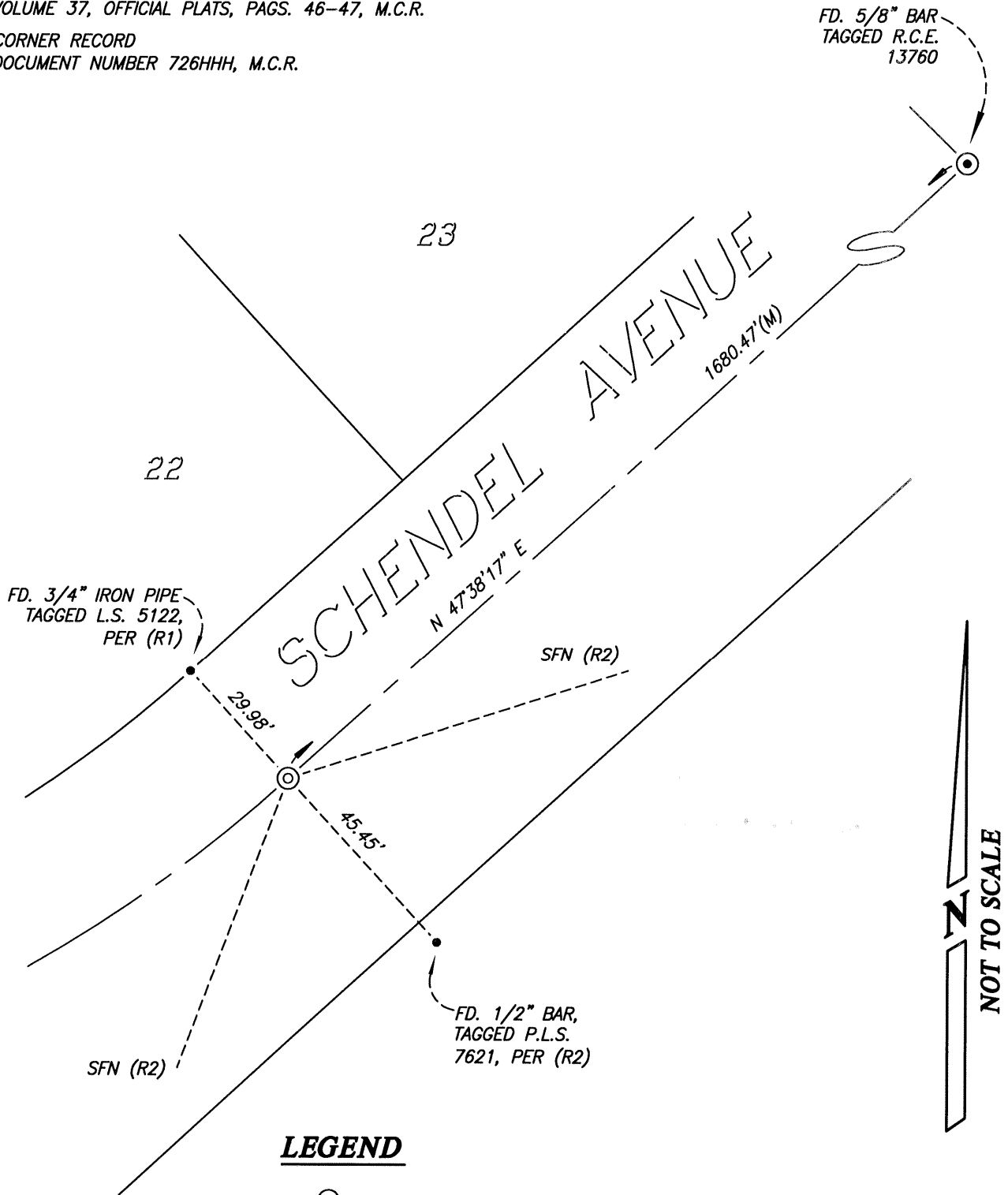
Title DEP. CO. SURVEYOR



County Surveyor's Comment _____

REFERENCES

- (M) - MEASURED THIS SURVEY
- (R1) - MAP OF "ALMOND GROVE",
VOLUME 37, OFFICIAL PLATS, PAGES. 46-47, M.C.R.
- (R2) - CORNER RECORD
DOCUMENT NUMBER 726HHH, M.C.R.



NOT TO SCALE

LEGEND

- ⊙— FD. MONUMENT IN WELL, AS NOTED
- FD. MONUMENT
- ⊙— SET 3/4"(I.D.) x 24" IRON PIPE TAGGED P.L.S. 7788, IN MONUMENT WELL