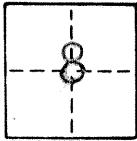


CORNER RECORD

COUNTY OF MERCED T. 6. SOUTH R. 11. EAST M.D.B.M. MERIDIAN CALIFORNIA
 CORNER TYPE: GOVT. CORNER MEANDER RANCHO CONTROL OTHER
 CORNER IDENTIFICATION — DATE OF VISIT SEPT 5 1995



CORNER — LEFT AS FOUND FOUND AND TAGGED REESTABLISHED OBLITERATED CORNER REBUILT

PHYSICAL DESCRIPTION OF CORNER FOUND; EVIDENCE AND METHOD USED TO IDENTIFY OR REESTABLISH

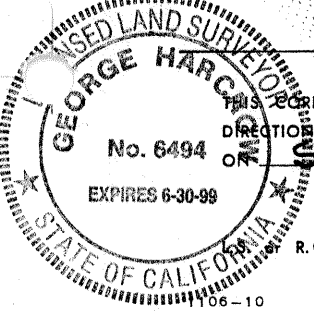
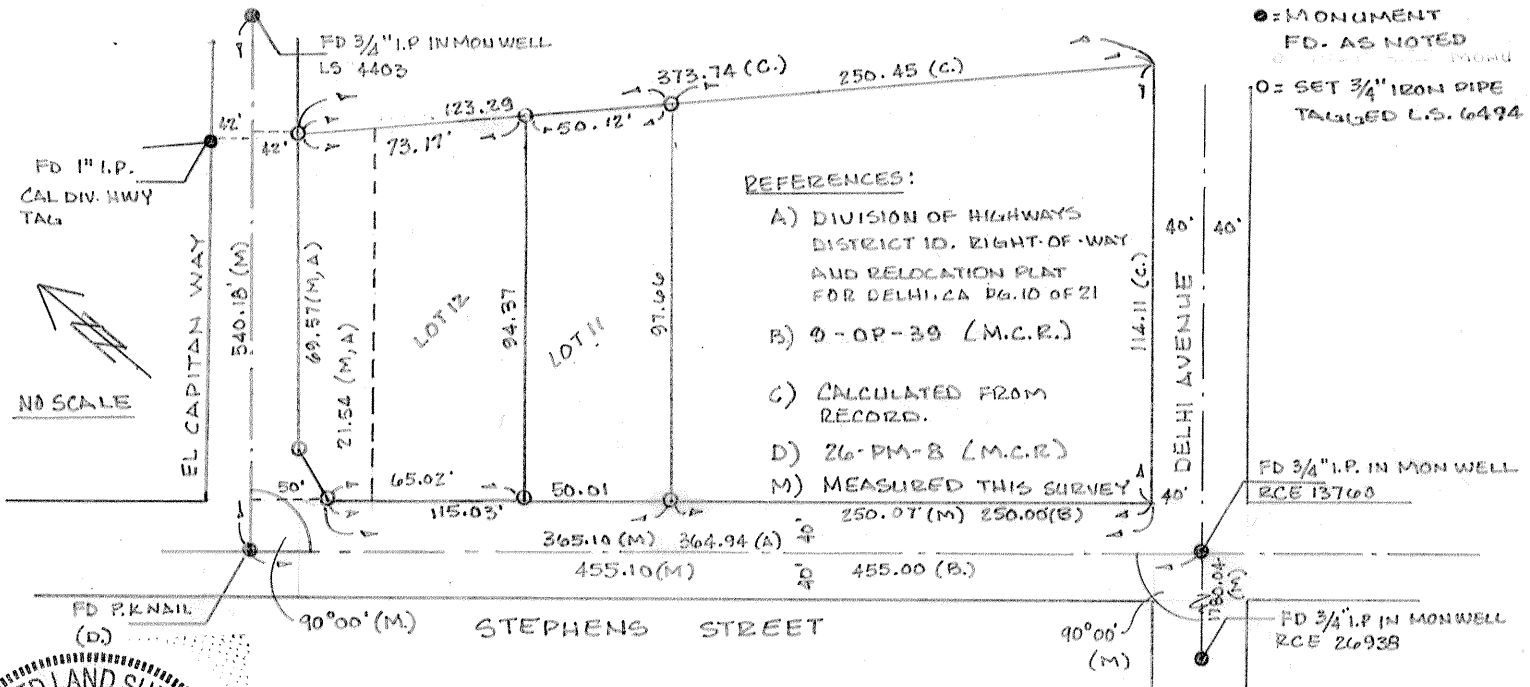
RESET CORNERS OF LOTS 11, AND EL CAPITAN RIGHT OF WAY AS PER NOTED REFERENCES.
 FOUND NO EVIDENCE OF ORIGINAL MONUMENTATION. RESET BY LOT PRORATION BASED ON
 MONUMENTS FOUND AND CALCULATED LOCATIONS.

PHYSICAL DESCRIPTION OF MONUMENTS REBUILT OR PERPETUATED

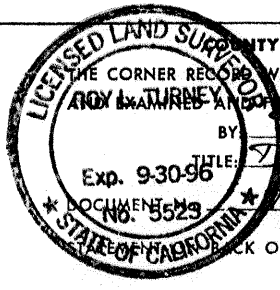
SET MONUMENTS AS INDICATED IN SKETCH - 3/4" IRON PIPE TAGGED L.S. 6494.

CALIFORNIA COORDINATE SYSTEM ORDER: FIRST SECOND THIRD
 STATIONS USED: NGS (USC & GS) STATE COUNTY OTHER STATION _____ STATION _____
 ZONE _____ ELEVATION _____ NORTHINGS (Y) _____ EASTINGS (X) _____

SKETCH: (Include reference tie or witness points, remarks and topo of area)



SURVEYOR'S CERTIFICATE
 THIS CORNER RECORD WAS PREPARED BY ME OR UNDER MY
 DIRECTION IN CONFORMANCE WITH THE LAND SURVEYORS ACT
 ON SEPT 5 1995
 SIGNED: [Signature]
 R.C.E. No.: L.S. 6494



COUNTY SURVEYOR'S CERTIFICATE
 THIS CORNER RECORD WAS RECEIVED OCT 1995
 AND EXAMINED AND FILED NOV 27 1995
 BY [Signature]
 TITLE: DEED TO SURVEYOR
 DOCUMENT NO. 126 DDD