

NO. 725

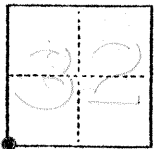
(For County Use Only)

CORNER RECORD

COUNTY OF MERCED T. 6S&T73 R. 14E MDBE MERIDIAN CALIFORNIA

CORNER TYPE: GOV'T. CORNER MEANDER RANCHO CONTROL OTHER

CORNER IDENTIFICATION — DATE OF VISIT DEC 5 1975



SOUTH WEST CORNER OF SECTION 32
T63, R14E

CORNER — LEFT AS FOUND FOUND AND TAGGED REESTABLISHED OBLITERATED CORNER REBUILT

PHYSICAL DESCRIPTION OF CORNER FOUND; EVIDENCE AND METHOD USED TO IDENTIFY OR REESTABLISH

FD. 2x2" HUB, 0" DOWN, USED SWING TIES IN
BOOK 51 PAGE 73, MERCED COUNTY PUBLIC
WORKS, ROAD DIVISION

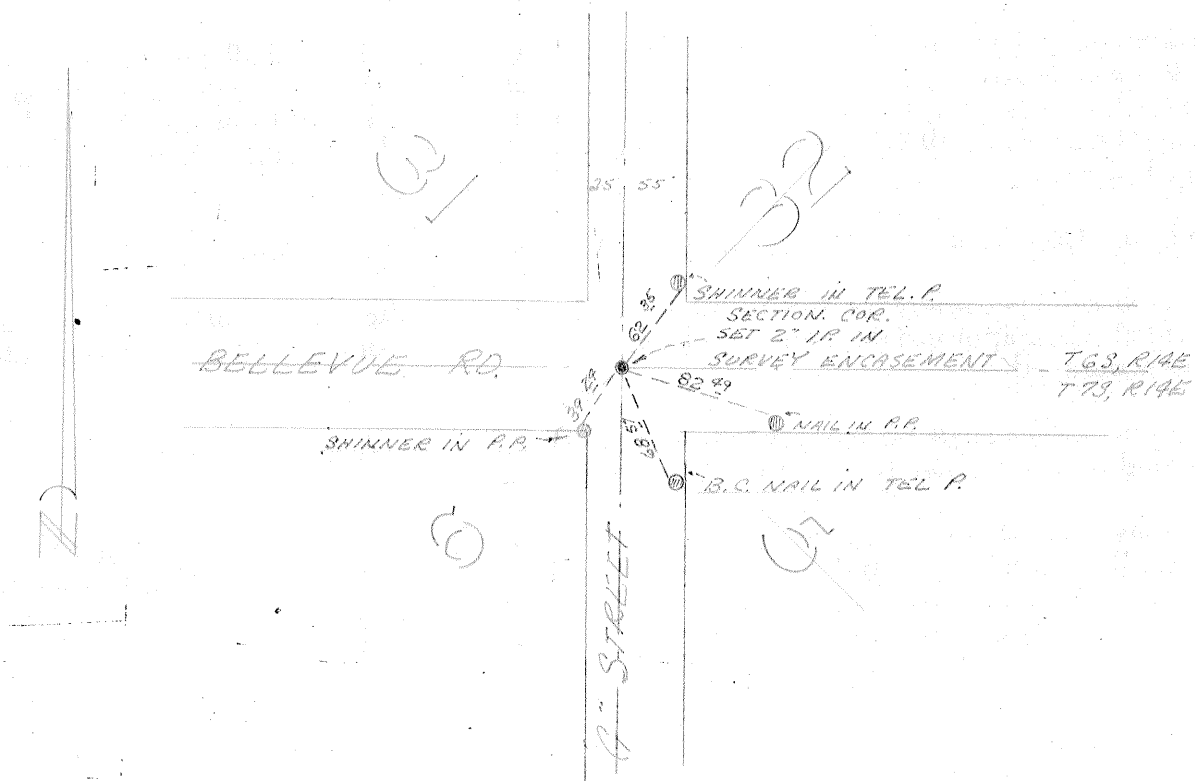
PHYSICAL DESCRIPTION OF MONUMENTS REBUILT OR PERPETUATED

RESET WITH 2" IRON PIPE WITH TAG R.C.E. 13760
SET IN SURVEY ENCASEMENT, FLUSH WITH
NEW PAVEMENT

CALIFORNIA COORDINATE SYSTEM ORDER: FIRST SECOND THIRD
STATIONS USED: NGS (USC & GS) STATE COUNTY OTHER STATION _____ STATION _____
ZONE _____ ELEVATION _____ NORTHINGS (Y) _____ EASTINGS (X) _____

(Fold)

SKETCH: (Include reference tie or witness points, remarks and topo of area)



SURVEYOR'S CERTIFICATE

THIS CORNER RECORD WAS PREPARED BY ME OR UNDER MY DIRECTION IN CONFORMANCE WITH THE LAND SURVEYORS ACT ON _____ 19____.

SIGNED: _____

L.S. or R.C.E. No.: _____

SEAL

COUNTY SURVEYOR'S CERTIFICATE

THE CORNER RECORD WAS RECEIVED _____ 19____ AND EXAMINED AND FILED _____ 19____.

BY: _____ TITLE: _____

DOCUMENT No. 725

STATEMENT ON BACK OF SHEET

YES NO