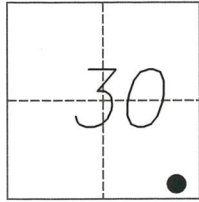


# CORNER RECORD

Agency Index 724-N4  
Document Number \_\_\_\_\_

City of MERCED County of MERCED, California  
Brief Legal Description NORTHEAST PROPERTY CORNER OF PARCEL "A" PER 86-P.M.-22, M.C.R.



T.7S., R.14E.

### CORNER TYPE

- Government Corner  Control
- Meander  Property
- Rancho  Other

Date of Survey DECEMBER 4, 2018

### COORDINATES (Optional)

- N. \_\_\_\_\_ E. \_\_\_\_\_
- Elevation \_\_\_\_\_
- Units Metric  U.S. Survey Foot
- Horizontal Datum \_\_\_\_\_
- Zone \_\_\_\_\_ Epoch Date \_\_\_\_\_
- Vertical Datum \_\_\_\_\_
- Complies with Public Resources Code §§8801-8819
- Complies with Public Resources Code §§8890-8902

- PLS Act Ref.:  8765(d)  8771  8773  Other:
- Corner/Monument:  Left as found  Established  Rebuilt  Pre-Construction  
 Found and tagged  Reestablished  Referenced  Post-Construction

Narrative of corner identified and monument as found, set, reset, replaced, or removed:  
 See sheet #2 for description(s):

### SURVEYOR'S STATEMENT

This Corner Record was prepared by me or under my direction in conformance with the Professional Land Surveyors' Act on FEBRUARY 18, 2019.  
Signed [Signature] P.L.S. or R.C.E. No. 9417

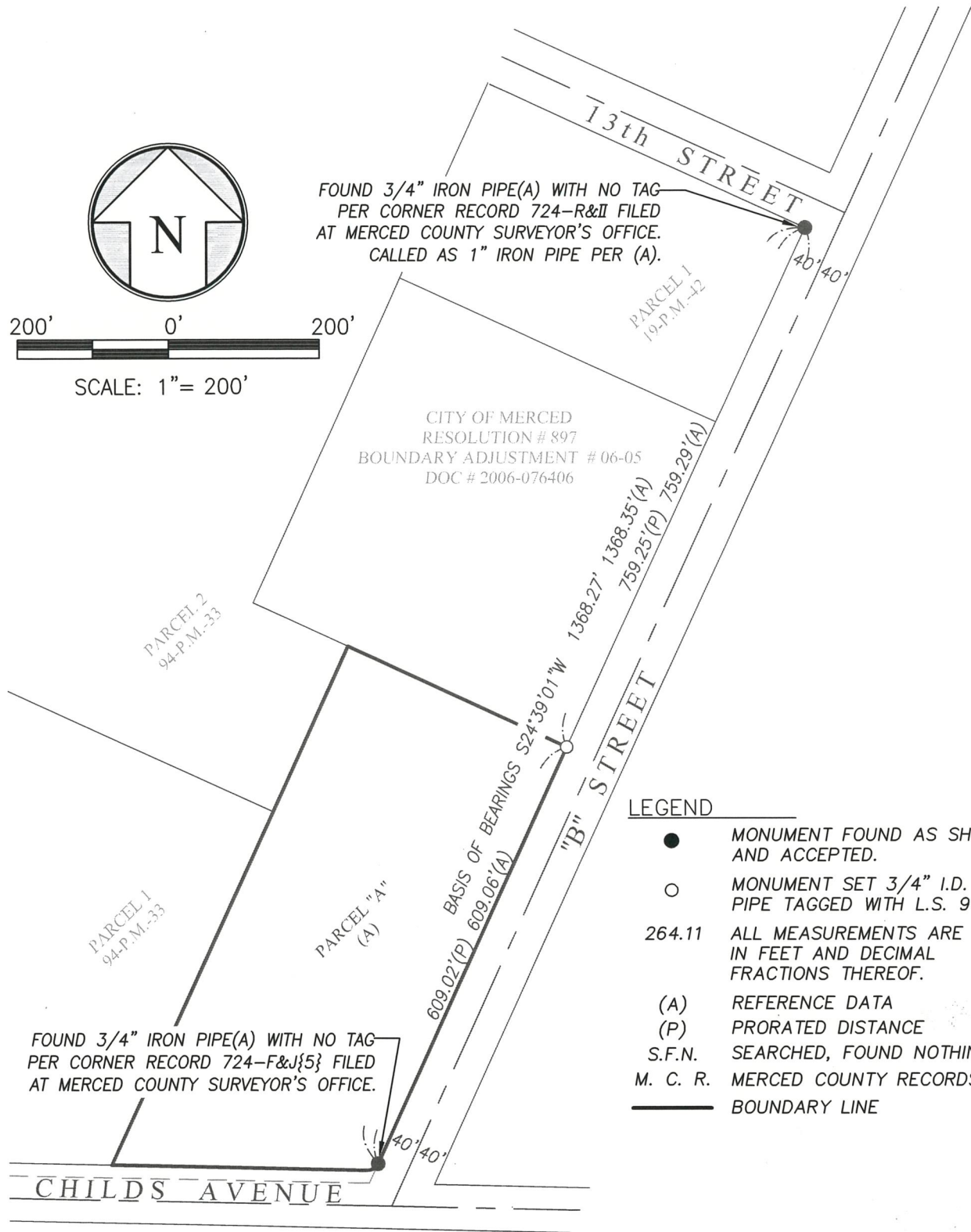


### COUNTY SURVEYOR'S STATEMENT

This Corner Record was received FEBRUARY 19, 2019 and examined and filed FEBRUARY 20, 2019.  
Signed Zachary T. Janz P.L.S. or R.C.E. No. 8664  
Title COUNTY SURVEYOR



County Surveyor's Comment



**LEGEND**

- MONUMENT FOUND AS SHOWN AND ACCEPTED.
- MONUMENT SET 3/4" I.D. IRON PIPE TAGGED WITH L.S. 9417
- 264.11 ALL MEASUREMENTS ARE IN FEET AND DECIMAL FRACTIONS THEREOF.
- (A) REFERENCE DATA
- (P) PRORATED DISTANCE
- S.F.N. SEARCHED, FOUND NOTHING
- M. C. R. MERCED COUNTY RECORDS
- BOUNDARY LINE

**BASIS OF BEARINGS**  
THE BEARING OF S24°39'01"W ALONG THE NORTHWESTERLY LINE OF "B" STREET AS SHOWN ON (A), IS THE BASIS FOR ALL BEARINGS SHOWN ON THE MAP.

**REFERENCES**  
(A) PARCEL MAP FOR RAYMOND A. BESSEMER, M.D., 86 P.M. 22, M.C.R.