

CORNER RECORD

Agency Index 724-M4

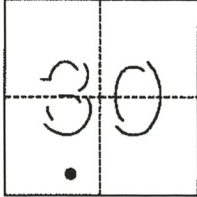
Document Number _____

City of MERCED County of MERCED, California

Brief Legal Description GPS/GIS MONUMENT 1082 PER 27 RS 43

CORNER TYPE

COORDINATES (Optional)



T. 7S, R. 14E

- Government Corner
- Meander
- Rancho
- Control
- Property
- Other

Date of Survey January 10, 2018

N. _____ E. _____

Elevation _____

Units Metric U.S. Survey Foot

Horizontal Datum _____

Zone _____ Epoch Date _____

Vertical Datum _____

Complies with Public Resources Code §§8801-8819

Complies with Public Resources Code §§8890-8902

PLS Act Ref.: 8765(d) 8771 8773 Other:

Corner/Monument: Left as found Established Rebuilt Pre-Construction

Found and tagged Reestablished Referenced Post-Construction

Narrative of corner identified and monument as found, set, reset, replaced, or removed:

See sheet #2 for description(s):

SURVEYOR'S STATEMENT

This Corner Record was prepared by me or under my direction in conformance with

the Professional Land Surveyors' Act on 3-26-18

Signed Duane J. Andrews P.L.S. or ~~R.C.E.~~ No. 4052



COUNTY SURVEYOR'S STATEMENT

This Corner Record was received MARCH 29, 2018

and examined and filed MARCH 30, 2018

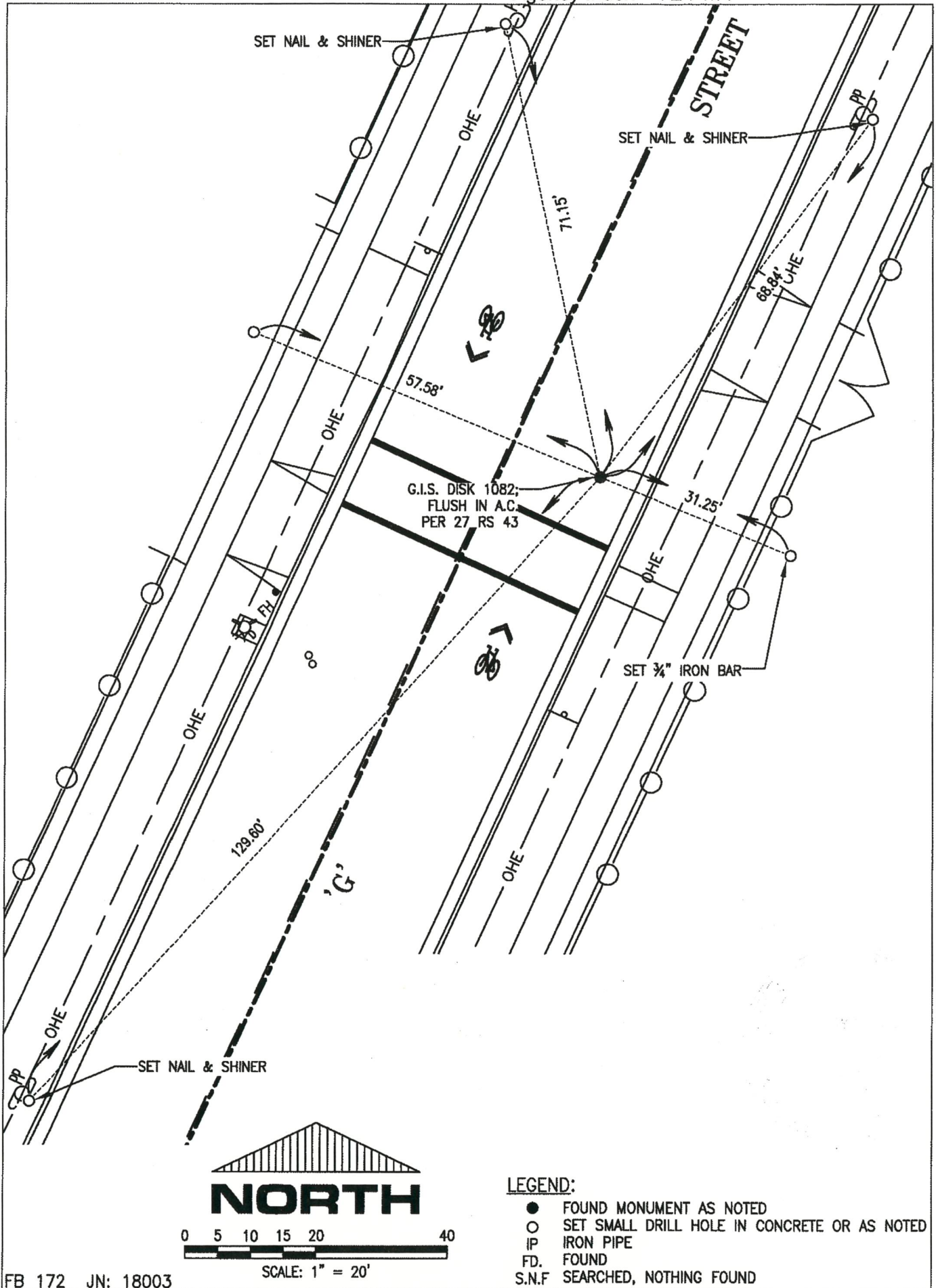
Signed Zachary T. Janz P.L.S. or R.C.E. No. 8664

Title COUNTY SURVEYOR

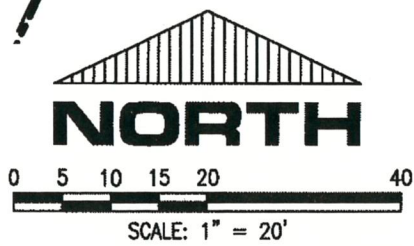
County Surveyor's Comment



W:\land projects\18003 City of Merced G St.Topo\18003 Corner Record.dwg, 3/27/2018 4:59:11 PM



FB 172 JN: 18003



LEGEND:

- FOUND MONUMENT AS NOTED
- SET SMALL DRILL HOLE IN CONCRETE OR AS NOTED
- IP IRON PIPE
- FD. FOUND
- S.N.F SEARCHED, NOTHING FOUND