

# CORNER RECORD

Agency Index 724-L4

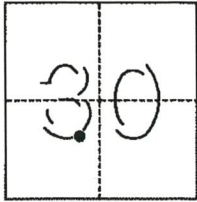
Document Number \_\_\_\_\_

City of MERCED County of MERCED, California

Brief Legal Description CENTERLINE OF "G" STREET AND 11TH STREET

### CORNER TYPE

### COORDINATES (Optional)



**T. 7S., R. 14E**

- Government Corner
- Meander
- Rancho
- Control
- Property
- Other

Date of Survey January 10, 2018

N. \_\_\_\_\_ E. \_\_\_\_\_

Elevation \_\_\_\_\_

Units  Metric  U.S. Survey Foot

Horizontal Datum \_\_\_\_\_

Zone \_\_\_\_\_ Epoch Date \_\_\_\_\_

Vertical Datum \_\_\_\_\_

Complies with Public Resources Code §§8801-8819

Complies with Public Resources Code §§8890-8902

PLS Act Ref.:  8765(d)  8771  8773  Other:

Corner/Monument:  Left as found  Established  Rebuilt  Pre-Construction

Found and tagged  Reestablished  Referenced  Post-Construction

Narrative of corner identified and monument as found, set, reset, replaced, or removed:

See sheet #2 for description(s):

### SURVEYOR'S STATEMENT

This Corner Record was prepared by me or under my direction in conformance with the Professional Land Surveyors' Act on 3-26-18

Signed Duane J. Andrews P.L.S. or ~~P.C.E.~~ No. 4052



### COUNTY SURVEYOR'S STATEMENT

This Corner Record was received MARCH 29, 2018 and examined and filed MARCH 30, 2018

Signed Zachary T. Janz P.L.S. or P.C.E. No. 8664  
Title COUNTY SURVEYOR



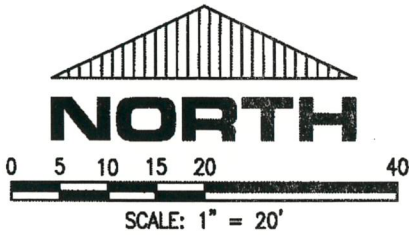
County Surveyor's Comment

W:\land projects\18003 City of Merced - G St.Topo\18003 Corner Record.dwg, 3/27/2018 4:58:13 PM

**LEGEND:**

- FOUND MONUMENT AS NOTED
- SET SMALL DRILL HOLE IN CONCRETE
- IP IRON PIPE
- FD. FOUND
- S.N.F SEARCHED, NOTHING FOUND

FD. CONCRETE NAIL IN A.C.

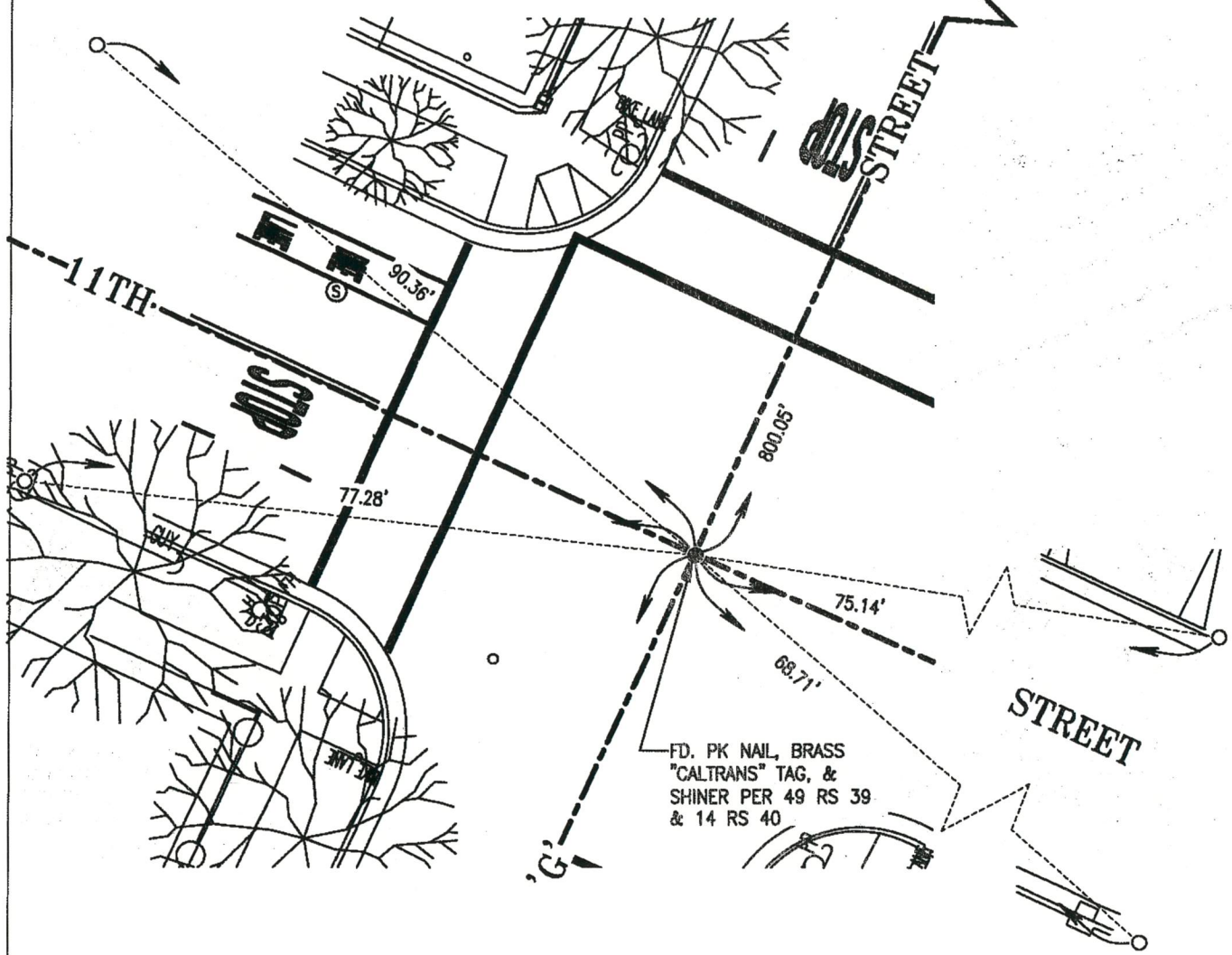


13TH STREET

STOP STREET

11TH STREET

STREET



FD. PK NAIL, BRASS  
 "CALTRANS" TAG, &  
 SHINER PER 49 RS 39  
 & 14 RS 40