

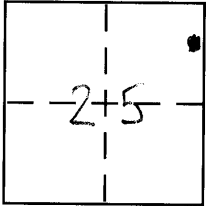
**CORNER RECORD**

Document Number 724-KKK

City of MERCED

County of MERCED, California

Brief Legal Description LOT 13 Block 274 Z.O.P. 12 M.C.R.



7/13

**CORNER TYPE**

- Government Corner  Control
- Meander  Property
- Rancho  Other
- Date of Survey 10-31-08

**COORDINATES (Optional)**

- N. \_\_\_\_\_
- E. \_\_\_\_\_
- Zone \_\_\_\_\_ NAD27  NAD83
- NAD83 Epoch \_\_\_\_\_
- Elev. \_\_\_\_\_
- Vert. Datum: NGVD29  NAVD88
- Meas. Units: Metric  Imperial

Corner - Left as found  Found and tagged  Established  Reestablished  Rebuilt

Identification and type of corner found: Evidence used to identify or procedure used to establish or reestablish the corner:

SEE SKETCH

A description of the physical condition of the monument as found and as set or reset:

SEE SKETCH

**SURVEYOR'S STATEMENT**

This Corner Record was prepared by me or under my direction in conformance with the Land Surveyor's Act on 12-3-08

Signed [Signature] P.L.S or R.C.E. No. \_\_\_\_\_



**COUNTY SURVEYOR'S STATEMENT**

This Corner Record was received Dec. 3, 2008

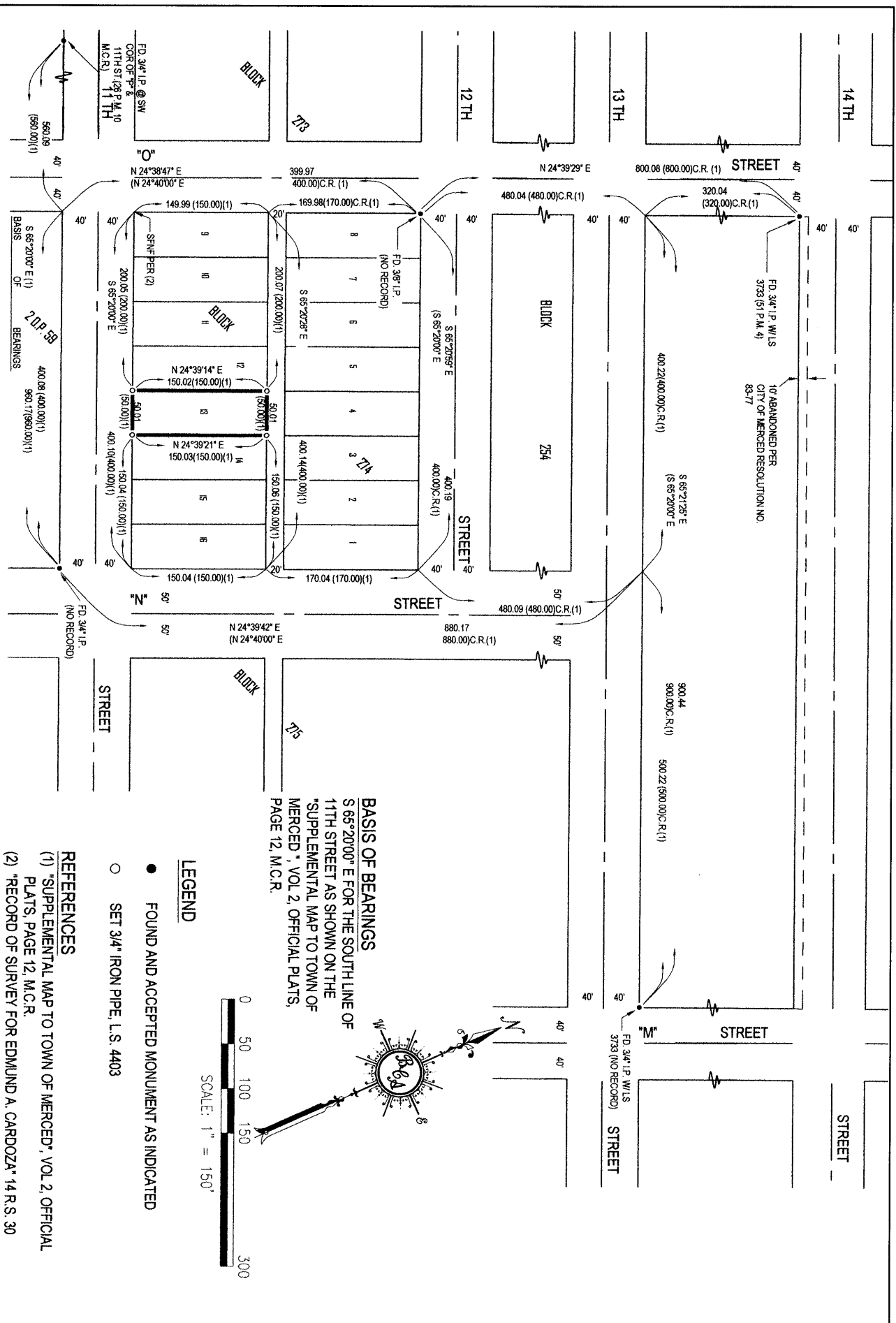
and examined and filed Dec. 4, 2008

Signed [Signature] P.L.S or R.C.E. No. 4895

Title Dep. County Surveyor



County Surveyor's Comment \_\_\_\_\_



**BASIS OF BEARINGS**  
 S 66°20'00" E FOR THE SOUTH LINE OF  
 11TH STREET AS SHOWN ON THE  
 SUPPLEMENTAL MAP TO TOWN OF  
 MERCED\*, VOL. 2, OFFICIAL PLATS,  
 PAGE 12, M.C.R.

**LEGEND**

- FOUND AND ACCEPTED MONUMENT AS INDICATED
- SET 3/4" IRON PIPE, I.S. 4403

**REFERENCES**

- (1) SUPPLEMENTAL MAP TO TOWN OF MERCED\*, VOL. 2, OFFICIAL PLATS, PAGE 12, M.C.R.
- (2) RECORD OF SURVEY FOR EDMUND A. CARDOZA\*, 14 R.S. 30 M.C.R.

