

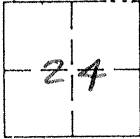
CORNER RECORD

30

CO OF MERCED T. 7S R. 13E MERIDIAN CALIFORNIA

CORNER TYPE: GOV'T. CORNER MEANDER RANCHO CONTROL OTHER

CORNER IDENTIFICATION - DATE OF VISIT Aug. 4 1987



CORNER — LEFT AS FOUND FOUND AND TAGGED REESTABLISHED OBLITERATED CORNER REBUILT

PHYSICAL DESCRIPTION OF CORNER FOUND; EVIDENCE AND METHOD USED TO IDENTIFY OR REESTABLISH.

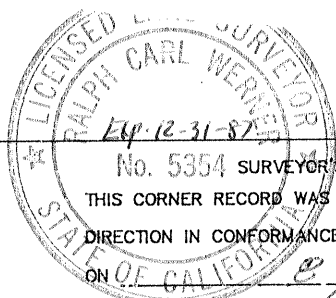
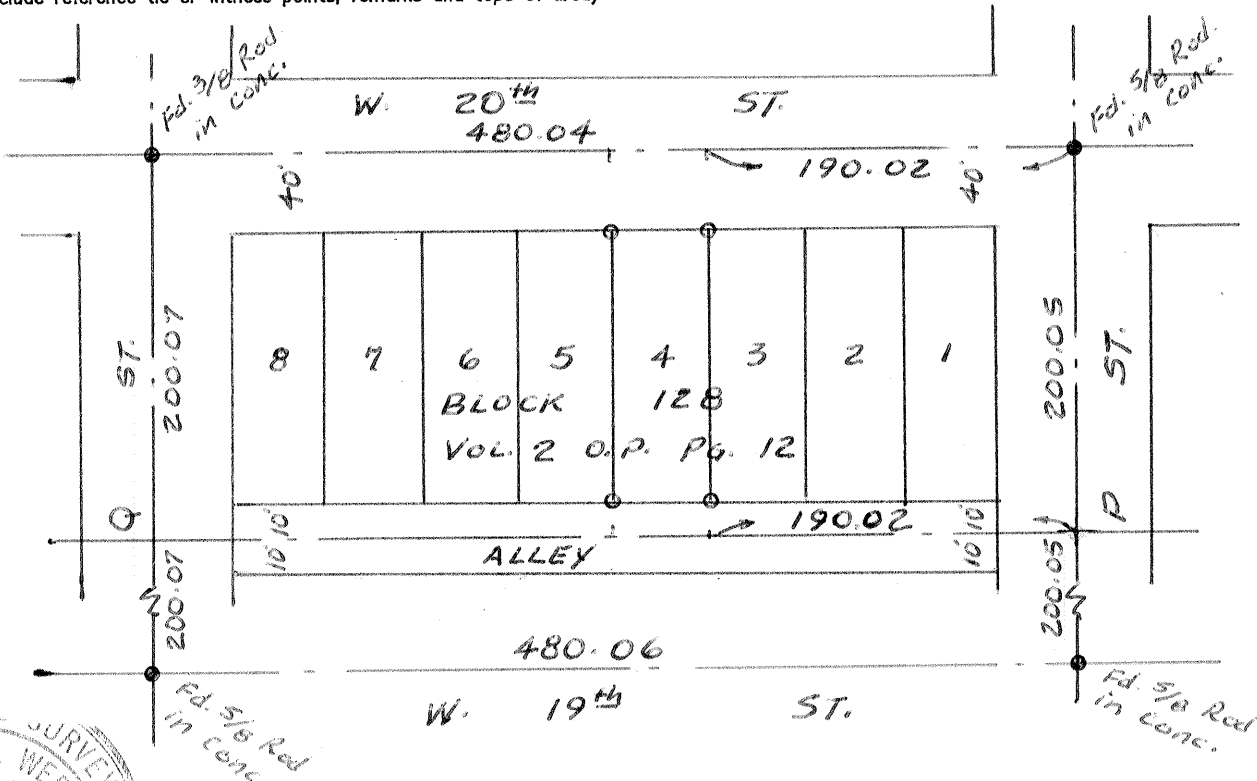
PHYSICAL DESCRIPTION OF MONUMENTS REBUILT OR PERPETUATED.

- FOUND CORNER AS SHOWN
- CORNER SET 3/4" IP. W/ RCE 10990 TAG

CALIFORNIA COORDINATE SYSTEM ORDER: FIRST SECOND THIRD
 STATIONS USED: NGS (USC & GS) STATE COUNTY OTHER STATION _____ STATION _____
 ZONE _____ ELEVATION _____ NORTHINGS (Y) _____ EASTINGS (X) _____

(Fold)

SKETCH: (Include reference tie or witness points, remarks and topo of area)



No. 5354 SURVEYOR'S CERTIFICATE
 THIS CORNER RECORD WAS PREPARED BY ME OR UNDER MY
 DIRECTION IN CONFORMANCE WITH THE LAND SURVEYORS ACT
 ON 8-25 19 87

SIGNED Ralph Werner
 L.S. or R.C.E. No. LS 5354

SEAL

COUNTY SURVEYOR'S CERTIFICATE

THE CORNER RECORD WAS RECEIVED _____ 19 _____
 AND EXAMINED AND FILED 8/28/87 19 87
 BY: Ralph Werner
 TITLE: Dep. Co. Sur.

DOCUMENT No. 724-H

STATEMENT ON BACK OF SHEET YES NO