

CORNER RECORD

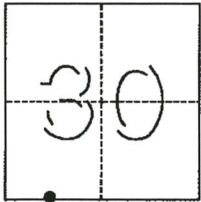
Agency Index 724-GG

Document Number _____

City of MERCED County of MERCED, California

Brief Legal Description MONUMENT AT THE CENTERLINE OF G STREET AND CHILDS AVENUE

CORNER TYPE



T. 7S., R. 14E

- Government Corner
- Meander
- Rancho
- Control
- Property
- Other

Date of Survey January 10, 2018

COORDINATES (Optional)

N. _____ E. _____

Elevation _____

Units Metric U.S. Survey Foot

Horizontal Datum _____

Zone _____ Epoch Date _____

Vertical Datum _____

Complies with Public Resources Code §§8801-8819

Complies with Public Resources Code §§8890-8902

PLS Act Ref.: 8765(d) 8771 8773 Other:

Corner/Monument: Left as found Established Rebuilt Pre-Construction
 Found and tagged Reestablished Referenced Post-Construction

Narrative of corner identified and monument as found, set, reset, replaced, or removed:

See sheet #2 for description(s):

SURVEYOR'S STATEMENT

This Corner Record was prepared by me or under my direction in conformance with

the Professional Land Surveyors' Act on 3-26-18

Signed Duane J. Andrews P.L.S. or ~~P.C.E.~~ No. 4052



COUNTY SURVEYOR'S STATEMENT

This Corner Record was received MARCH 29, 2018

and examined and filed MARCH 30, 2018

Signed Zach T. Janz P.L.S. or ~~P.C.E.~~ No. 8664

Title COUNTY SURVEYOR

County Surveyor's Comment



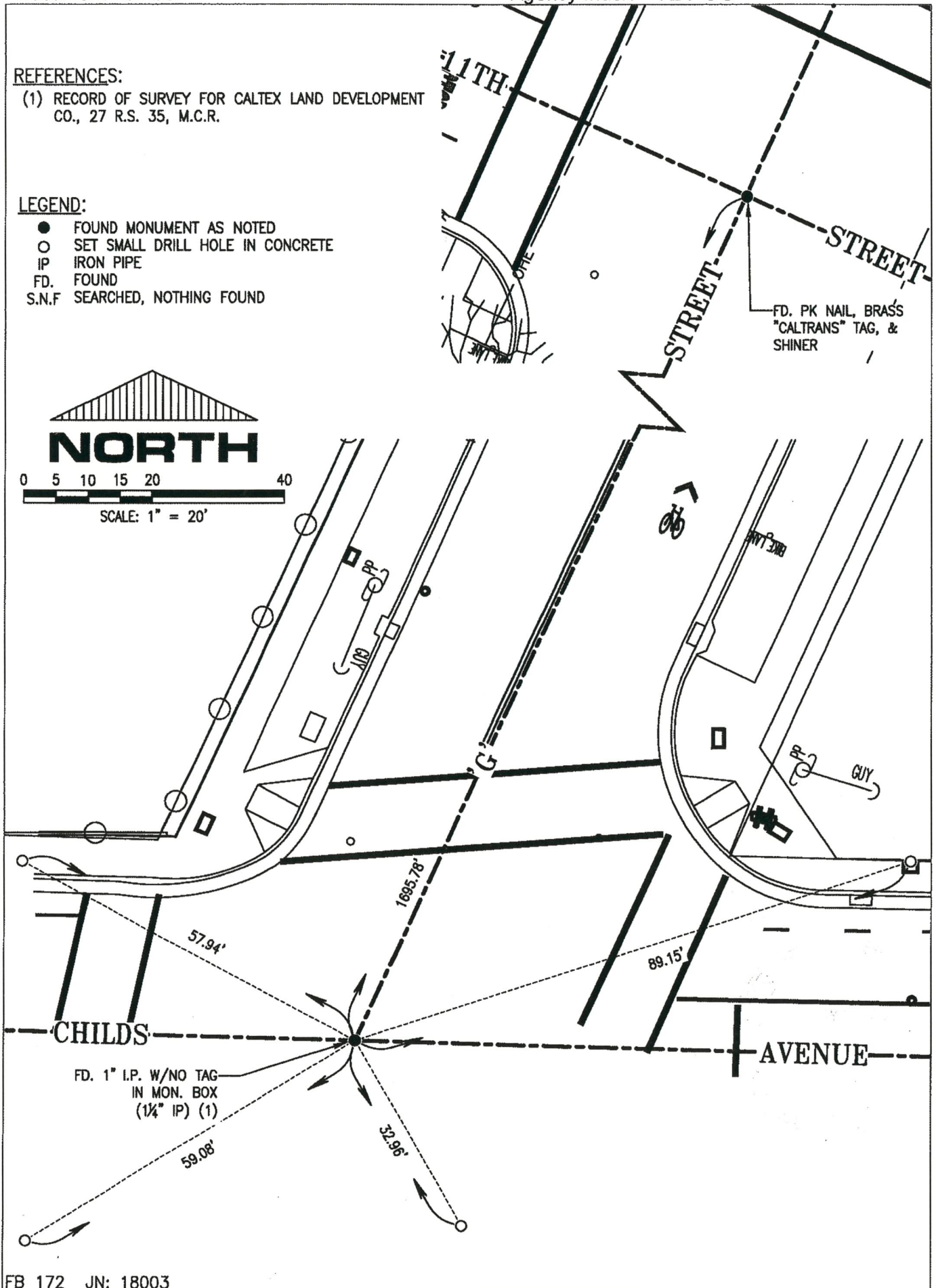
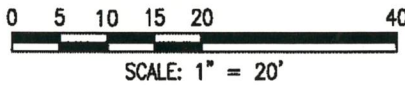
W:\land projects\18003 City of Merced G St.Topo\18003 Corner Record.dwg, 3/27/2018 4:56:19 PM

REFERENCES:

(1) RECORD OF SURVEY FOR CALTEX LAND DEVELOPMENT CO., 27 R.S. 35, M.C.R.

LEGEND:

- FOUND MONUMENT AS NOTED
- SET SMALL DRILL HOLE IN CONCRETE
- IP IRON PIPE
- FD. FOUND
- S.N.F. SEARCHED, NOTHING FOUND



FB 172 JN: 18003

W:\land projects\18003 City of Merced G St.Topo\18003 Corner Record.dwg, 3/27/2018 4:55:56 PM