

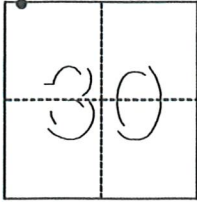
# CORNER RECORD

Agency Index 724-A

Document Number 724 - A

City of MERCED County of MERCED, California

Brief Legal Description CENTERLINE MONUMENT W. 18TH STREET & 'M' STREET



T. 7S, R. 14E

### CORNER TYPE

- Government Corner
- Meander
- Rancho
- Control
- Property
- Other

Date of Survey February 18, 2019

### COORDINATES (Optional)

- N. \_\_\_\_\_ E. \_\_\_\_\_
- Elevation \_\_\_\_\_
- Units  Metric  U.S. Survey Foot
- Horizontal Datum \_\_\_\_\_
- Zone \_\_\_\_\_ Epoch Date \_\_\_\_\_
- Vertical Datum \_\_\_\_\_
- Complies with Public Resources Code §§8801-8819
- Complies with Public Resources Code §§8890-8902

- PLS Act Ref.:  8765(d)  8771  8773  Other:
- Corner/Monument:  Left as found  Established  Rebuilt  Pre-Construction
- Found and tagged  Reestablished  Referenced  Post-Construction

Narrative of corner identified and monument as found, set, reset, replaced, or removed:

See sheet #2 for description(s):

### SURVEYOR'S STATEMENT

This Corner Record was prepared by me or under my direction in conformance with the Professional Land Surveyors' Act on 9-9-19

Signed Duane J. Andrews P.L.S. or ~~R.C.E.~~ No. 4052



### COUNTY SURVEYOR'S STATEMENT

This Corner Record was received SEPTEMBER 10, 2019

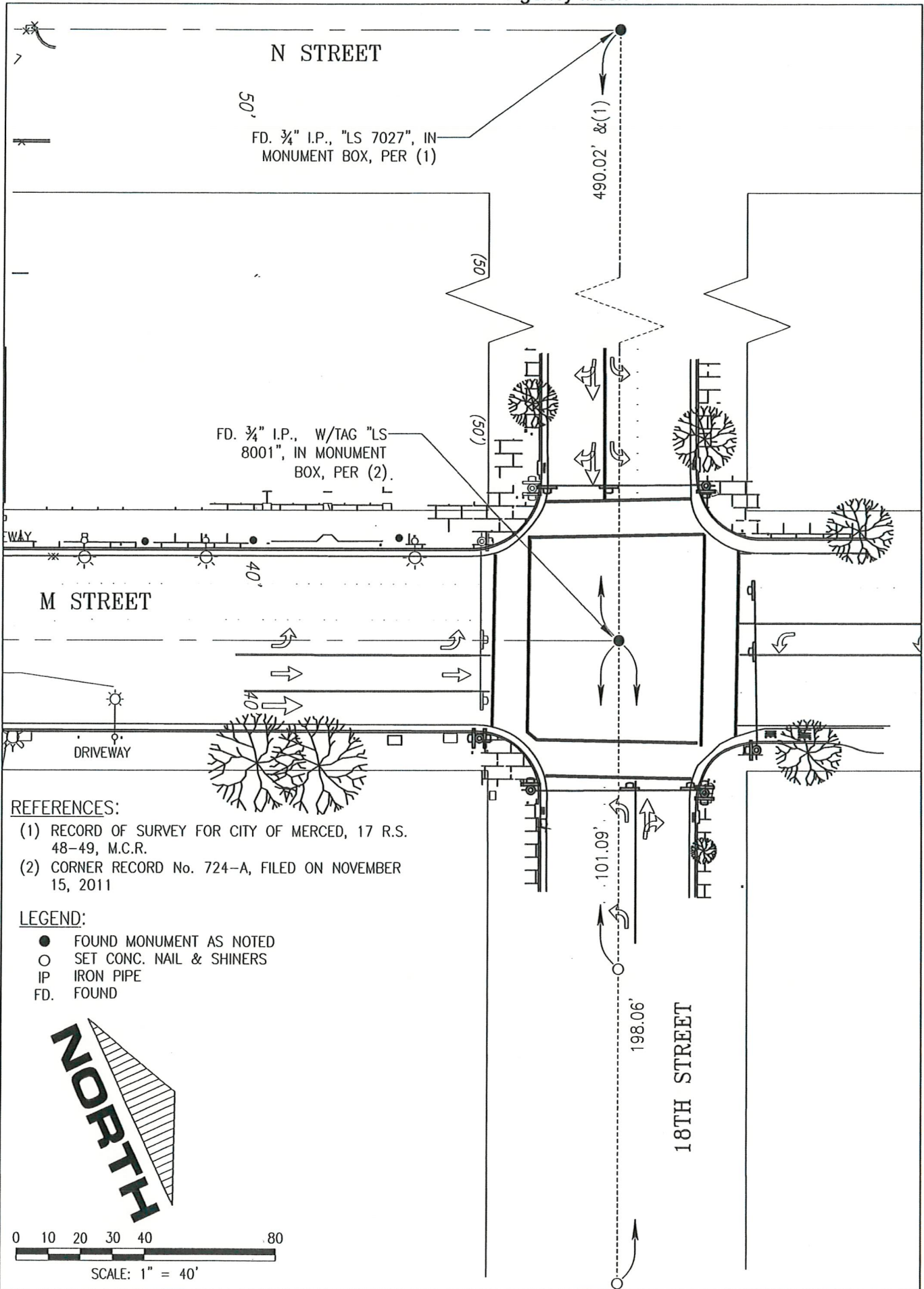
and examined and filed SEPTEMBER 12, 2019

Signed Zach T. Janz P.L.S. or R.C.E. No. 8664

Title COUNTY SURVEYOR



County Surveyor's Comment



N STREET

50'

FD. 3/4" I.P., "LS 7027", IN MONUMENT BOX, PER (1)

FD. 3/4" I.P., W/TAG "LS 8001", IN MONUMENT BOX, PER (2).

M STREET

- REFERENCES:
- (1) RECORD OF SURVEY FOR CITY OF MERCED, 17 R.S. 48-49, M.C.R.
  - (2) CORNER RECORD No. 724-A, FILED ON NOVEMBER 15, 2011

- LEGEND:
- FOUND MONUMENT AS NOTED
  - SET CONC. NAIL & SHINERS
  - IP IRON PIPE
  - FD. FOUND

