

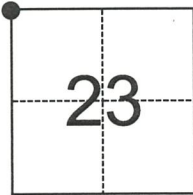
CORNER RECORD

Agency Index 722
 Document Number _____

City of N/A County of Merced, California
 Brief Legal Description Northwest Corner Section 23, T.7S., R.15E., M.D.B.&M

CORNER TYPE

COORDINATES (Optional)



T.7S.
 R.15E.
 M.D.B.&M.

- Government Corner Control
 Meander Property
 Rancho Other

Date of Survey November 21, 2017

N. _____ E. _____
 Elevation _____
 Units Metric U.S. Survey Foot
 Horizontal Datum _____
 Zone _____ Epoch Date _____
 Vertical Datum _____
 Complies with Public Resources Code §§8801-8819
 Complies with Public Resources Code §§8890-8902

- PLS Act Ref.: 8765(d) 8771 8773 Other:
 Corner/
 Monument: Left as found Established Rebuilt Pre-Construction
 Found and tagged Reestablished Referenced Post-Construction

Narrative of corner identified and monument as found, set, reset, replaced, or removed:

See sheet #2 for description(s):

Found 2" iron pipe, down 18", set 60D nail with LS 7058 washer in hub, in iron pipe. Set new ties.

SURVEYOR'S STATEMENT

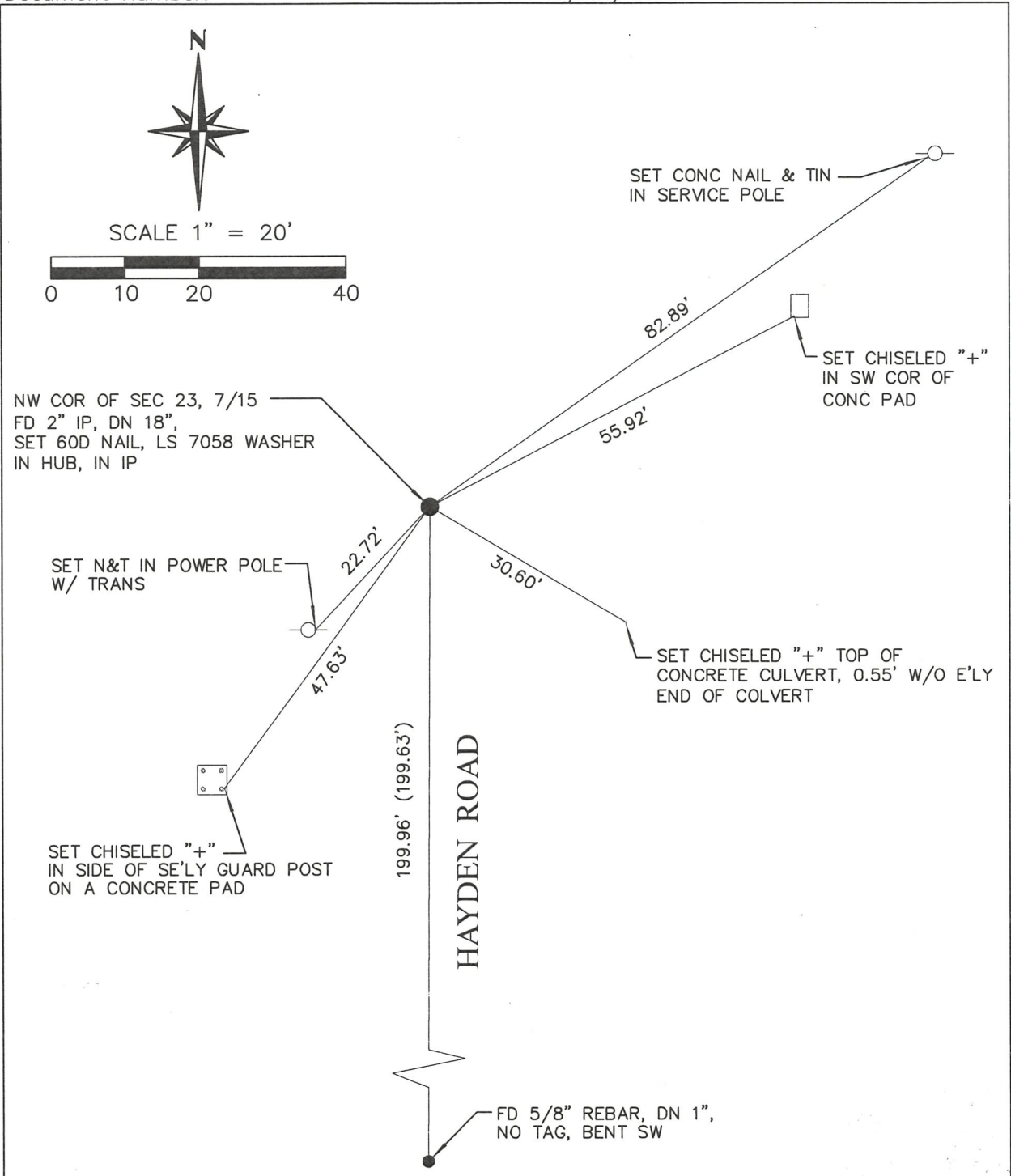
This Corner Record was prepared by me or under my direction in conformance with
 the Professional Land Surveyors' Act on June 28, 2018
 Signed [Signature] P.L.S. No. 7058



COUNTY SURVEYOR'S STATEMENT

This Corner Record was received JULY 2ND, 2018
 and examined and filed JULY 10TH, 2018
 Signed Zach T. Janz P.L.S. or R.C.E. No. 8664
 Title COUNTY SURVEYOR
 County Surveyor's Comment _____





LEGEND

() RECORD DATA PER PARCEL MAP RECORDED IN VOLUME 36 OF PARCEL MAPS AT THE PAGE 22, MERCED COUNTY RECORDS.

BASIS OF BEARINGS

ASTRONOMIC NORTH PER GPS OBSERVATIONS ON NOVEMBER 13, 2017.

McPHEETERS & ASSOCIATES

1486 TOLLHOUSE ROAD, SUITE 107
CLOVIS, CA 93611
(559) 299-9098
www.mcpheeters.com

JOB# 117175
117175 CR.DWG