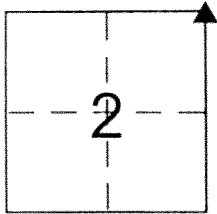


CORNER RECORD

Document Number 717

City of _____ County of Merced, California

Brief Legal Description NE Corner Sec.2 T.7 S R.10 E., M.D.B.& M.



CORNER TYPE

Government Corner Control
Meander Property
Rancho Other
Date of Survey 01/24/2013

COORDINATES (Optional)

N _____
E. _____
Zone _____ NAD27 NAD83
NAD83 Epoch _____
Elev. _____
Vert. Datum: NGVD29 NAVD88
Meas. Units: Metric Imperial

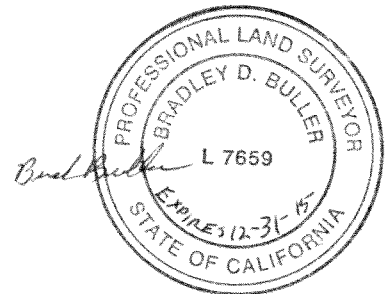
Corner - Left as found Found and tagged Established Reestablished Rebuilt

Identification and type of corner found: Evidence used to identify or procedure used to establish or reestablish the corner:
Found 1.5" Iron Pipe containing a bolt with a punch mark inside of pipe.
Monument is 0.4' below asphalt surface set in concrete in a NGS well like
structure with no lid referred to as a "lamphole" in reference maps
R.S. vol.9, page 1, 1967 and R.S. vol.10, page 7, 1968. Monument is
located in the intersection of Westside Blvd. and Van Clief Rd.

A description of the physical condition of the monument as found and as set or reset: Monument was found in
good condition.

SURVEYOR'S STATEMENT

This Corner Record was prepared by me or under my direction in conformance with
the Land Surveyor's Act on MARCH 20 2013
Signed Bradley D. Buller P.L.S or R.C.E. No. L 7659



COUNTY SURVEYOR'S STATEMENT

This Corner Record was received March 21, 2013
and examined and filed April 5, 2013
Signed [Signature] P.L.S or R.C.E. No. 4895
Title Acting County Surveyor



County Surveyor's Comment _____

