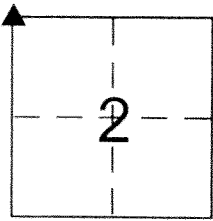


CORNER RECORD

Document Number 716

City of _____ County of Merced, California

Brief Legal Description NW Corner, Section 2, T.7.S., R. 10 E., M.D.B. & M.



CORNER TYPE

Government Corner Control
Meander Property
Rancho Other
Date of Survey 01-24-2013

COORDINATES (Optional)

N. _____
E. _____
Zone _____ NAD27 NAD83
NAD83 Epoch _____
Elev. _____
Vert. Datum: NGVD29 NAVD88
Meas. Units: Metric Imperial

Corner - Left as found Found and tagged Established Reestablished Rebuilt

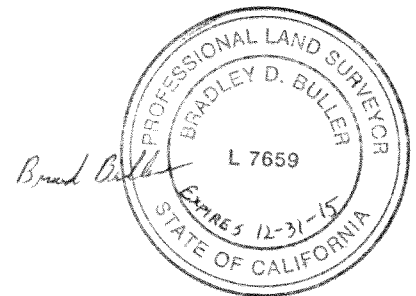
Identification and type of corner found: Evidence used to identify or procedure used to establish or reestablish the corner:
Found 1" Iron Pipe with CALTRANS yellow plastic plug with tack. Monument is down 1' in concrete below surface of a cultivated field west of Lander Ave (HWY 165) per CALTRANS Right of Way Record Map, Sheet 14, EA 381502, 05/11/08, last revised 07/06/10.

Also found a reference monument per R.S. vol.9, Page 1,1967, which is a 2" Iron Pipe, 0.8' down in dirt, 49.41' from the NW Section Corner Monument.

A description of the physical condition of the monument as found and as set or reset: Monument was found in good condition. Reference monument was found bent and crushed in at the top.

SURVEYOR'S STATEMENT

This Corner Record was prepared by me or under my direction in conformance with the Land Surveyor's Act on MARCH 20 2013
Signed Bradley D. Buller P.L.S or R.C.E. No. L 7659



COUNTY SURVEYOR'S STATEMENT

This Corner Record was received March 21, 2013
and examined and filed April 26, 2013
Signed J. Steven Reichmuth P.L.S or R.C.E. No. 4895
Title Acting County Surveyor

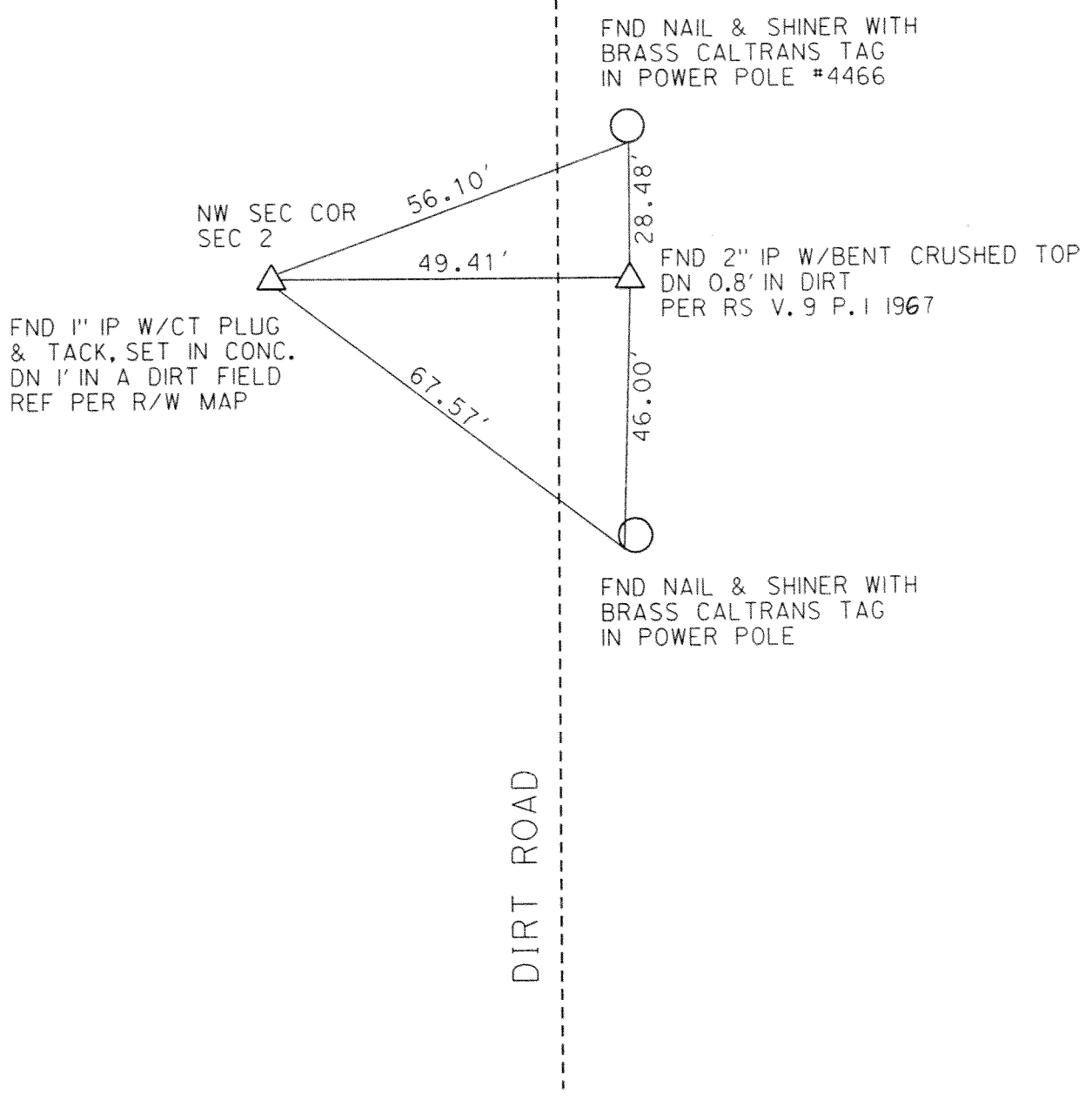


County Surveyor's Comment There appears to be no record of the 3/4" Iron Pipe found and replaced on the above referenced Caltrans right of way record map.



NTS

DIRT ROAD



FND NAIL & SHINER WITH
BRASS CALTRANS TAG
IN POWER POLE #4466

NW SEC COR
SEC 2

FND 1" IP W/CT PLUG
& TACK, SET IN CONC.
DN 1' IN A DIRT FIELD
REF PER R/W MAP

FND 2" IP W/BENT CRUSHED TOP
DN 0.8' IN DIRT
PER RS V. 9 P. 1 1967

FND NAIL & SHINER WITH
BRASS CALTRANS TAG
IN POWER POLE

56.10'

49.41'

67.57'

28.48'

46.00'