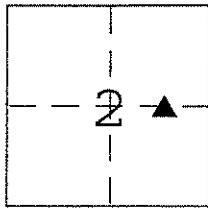


CORNER RECORD

Document Number 716-K

City of _____ County of Merced, California

Brief Legal Description CE 1/16 Corner, Section 2, T. 7 S. R. 10 E., M. D. B. & M.



CORNER TYPE

Government Corner Control
Meander Property
Rancho Other
Date of Survey 01-24-2013

COORDINATES (Optional)

N. _____
E. _____
Zone _____ NAD27 NAD83
NAD83 Epoch _____
Elev. _____
Vert. Datum: NGVD29 NAVD88
Meas. Units: Metric Imperial

Corner - Left as found Found and tagged Established Reestablished Rebuilt

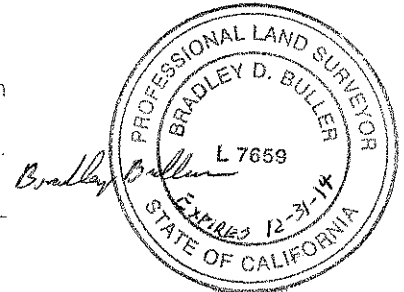
Identification and type of corner found: Evidence used to identify or procedure used to establish or reestablish the corner:

Found 1" Iron Pipe in dirt down 1' with CALTRANS yellow plug with tack in dirt road West of Van Clief Rd. per R.S. vol. 9 page 1., 1967. Found monument does not match the monument being described as the CE 1/16 monument in 1967 Record of Survey map.

A description of the physical condition of the monument as found and as set or reset: Monument was found in good condition.

SURVEYOR'S STATEMENT

This Corner Record was prepared by me or under my direction in conformance with the Land Surveyor's Act on March 20, 2013.
Signed Bradley Buller P.L.S or R.C.E. No. L 7659



COUNTY SURVEYOR'S STATEMENT

This Corner Record was received October 1, 2013
and examined and filed October 7, 2013
Signed J. Steven Reichmuth P.L.S or ~~R.C.E.~~ No. 4895
Title County Surveyor



County Surveyor's Comment _____



TO WEST SIDE BLVD
↑

DIRT ROAD

SET $\frac{3}{4}$ " REBAR W/PUNCH MARK
2.5' LONG DN 0.7' IN FIELD

VINEYARD

SET $\frac{3}{4}$ " REBAR W/PUNCH MARK
2.5' LONG DN 0.5'
ON NORTH SIDE OF DIRT ROAD

SET $\frac{3}{4}$ " REBAR W/PUNCH MARK
2.5' LONG DN 1.2' IN FIELD

61.55'

68.96'

DIRT ROAD

81.36'

FND 1" IP DN 1.0'
W/ CALTRANS YELLOW
PLUG & TAG & TACK

TO LANDER AVE
←

TO VAN CLIEF RD
→

75.57'

SET $\frac{3}{4}$ " REBAR W/PUNCH MARK
2.5' LONG DN 0.8' ON EAST SIDE
OF RAISED DIRT ROAD

DIRT ROAD