

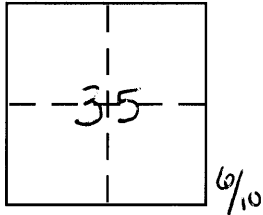
CORNER RECORD

Document Number 714-D#RR

City of _____

County of MERCED, California

Brief Legal Description NORTH LINE LOT 281 20.P. (01 M.C.R.)



CORNER TYPE

Government Corner Control
 Meander Property
 Rancho Other
 Date of Survey 12/19/07

COORDINATES (Optional)

N. _____
 E. _____
 Zone _____ NAD27 NAD83
 NAD83 Epoch _____
 Elev. _____
 Vert. Datum: NGVD29 NAVD88
 Meas. Units: Metric Imperial

Corner - Left as found Found and tagged Established Reestablished Rebuilt

Identification and type of corner found: Evidence used to identify or procedure used to establish or reestablish the corner:
SEE SKETCH

A description of the physical condition of the monument as found and as set or reset:
SEE SKETCH

SURVEYOR'S STATEMENT

This Corner Record was prepared by me or under my direction in conformance with the Land Surveyor's Act on 1-4-08

Signed [Signature] P.L.S or R.C.E. No. _____



COUNTY SURVEYOR'S STATEMENT

This Corner Record was received Jan. 8, 2008

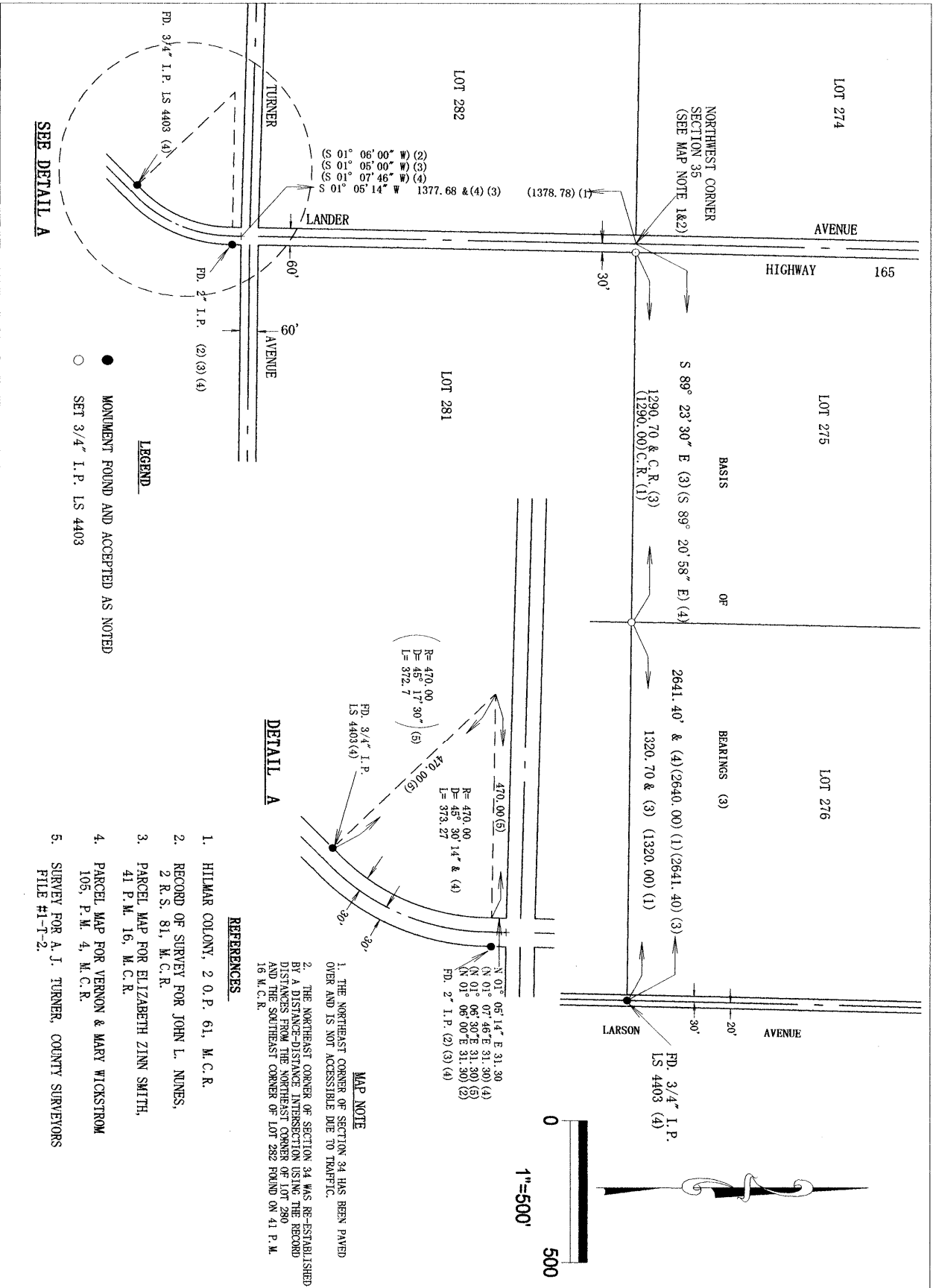
and examined and filed Jan. 9, 2008

Signed [Signature] P.L.S or R.C.E. No. 4895

Title Dep. County Surveyor



County Surveyor's Comment _____

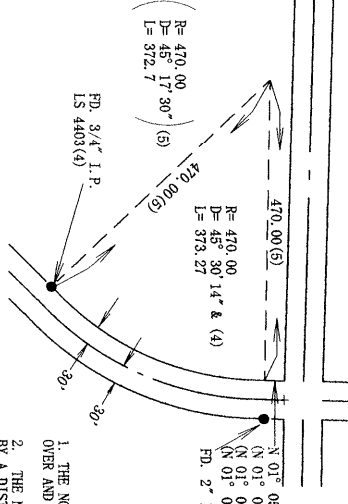


SEE DETAIL A

LEGEND

- MONUMENT FOUND AND ACCEPTED AS NOTED
- SET 3/4" I.P. LS 4403

DETAIL A



REFERENCES

1. HILMAR COLONY, 2 0 P. 61, M.C.R.
2. RECORD OF SURVEY FOR JOHN L. NUNES, 2 R.S. 81, M.C.R.
3. PARCEL MAP FOR ELIZABETH ZINN SMITH, 41 P.M. 16, M.C.R.
4. PARCEL MAP FOR VERNON & MARY WICKSTROM 105, P.M. 4, M.C.R.
5. SURVEY FOR A.J. TURNER, COUNTY SURVEYORS FILE #1-T-2.

MAP NOTE

1. THE NORTHEAST CORNER OF SECTION 34 HAS BEEN PAVED OVER AND IS NOT ACCESSIBLE DUE TO THIN LICE.

2. THE NORTHEAST CORNER OF SECTION 34 WAS RE-ESTABLISHED BY A DISTANCE-STRAVERSE INTERSECTION USING THE RECORD DISTANCES FROM THE NORTHEAST CORNER OF LOT 280 AND THE SOUTHEAST CORNER OF LOT 282 FOUND ON '41 P.M. 16 M.C.R.