

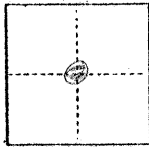
#688

### CORNER RECORD

COUNTY OF MERCED T. 9S. R. 13E. MD MERIDIAN CALIFORNIA

CORNER TYPE: GOVT. CORNER  MEANDER  RANCHO  CONTROL  OTHER

CORNER IDENTIFICATION — DATE OF VISIT Oct. 19 19 79



Interior 1/4 corner of section 14

CORNER — LEFT AS FOUND  FOUND AND TAGGED  REESTABLISHED OBLITERATED CORNER  REBUILT

PHYSICAL DESCRIPTION OF CORNER FOUND; EVIDENCE AND METHOD USED TO IDENTIFY OR REESTABLISH

No corner found at location. Found witness corner 30 feet west of corner location. Used reference monuments for the 1/2 section lines to the north and east to intersect for proper location

PHYSICAL DESCRIPTION OF MONUMENTS REBUILT OR PERPETUATED

Set 1 3/8" outside diameter iron pipe by 30" long at the intersection of the 1/2 section lines. Tagged "Merced County Surveyor"

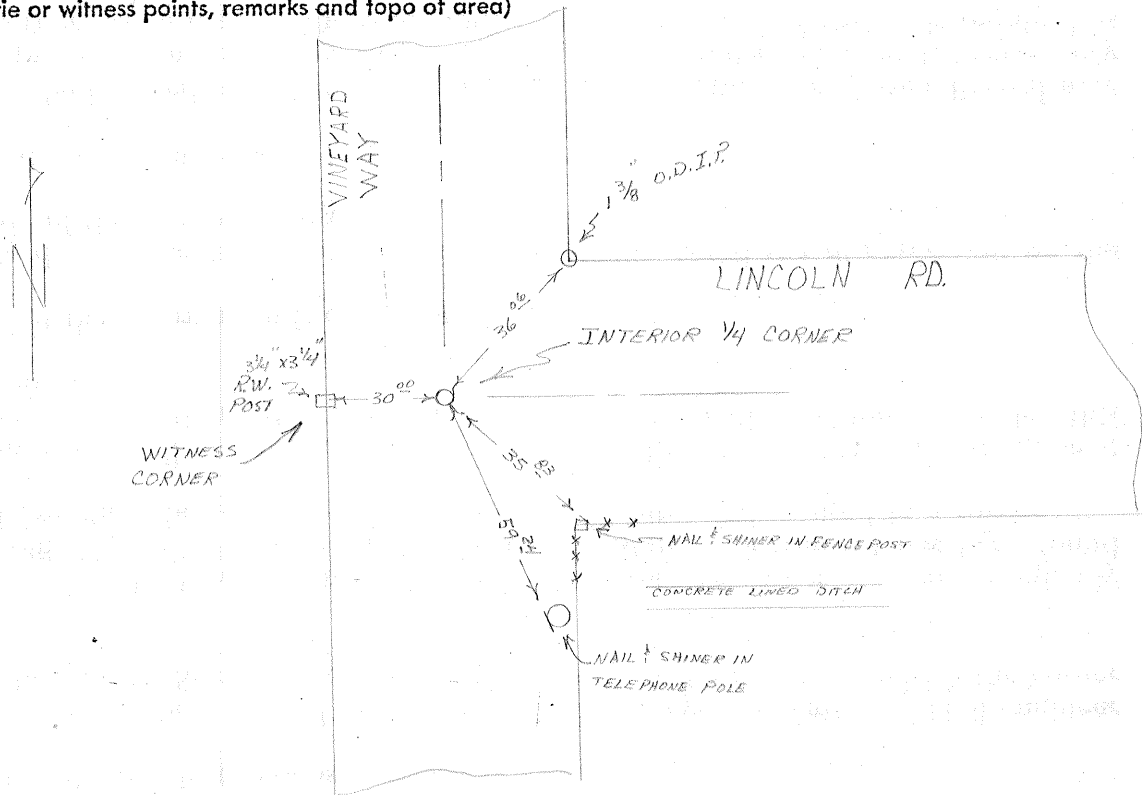
CALIFORNIA COORDINATE SYSTEM ORDER: FIRST  SECOND  THIRD

STATIONS USED: NGS (USC & GS)  STATE  COUNTY  OTHER  STATION \_\_\_\_\_ STATION \_\_\_\_\_

ZONE \_\_\_\_\_ ELEVATION \_\_\_\_\_ NORTHINGS (Y) \_\_\_\_\_ EASTINGS (X) \_\_\_\_\_

(Fold)

SKETCH: (Include reference tie or witness points, remarks and topo of area)



#### SURVEYOR'S CERTIFICATE

THIS CORNER RECORD WAS PREPARED BY ME OR UNDER MY DIRECTION IN CONFORMANCE WITH THE LAND SURVEYORS ACT

Gr. \_\_\_\_\_ 19 \_\_\_\_\_

SIGNED: \_\_\_\_\_

L.S. or R.C.E. No.: \_\_\_\_\_

SEAL

#### COUNTY SURVEYOR'S CERTIFICATE

THE CORNER RECORD WAS RECEIVED \_\_\_\_\_ 19 \_\_\_\_\_

AND EXAMINED AND FILED \_\_\_\_\_ 19 \_\_\_\_\_

BY: \_\_\_\_\_

TITLE: \_\_\_\_\_

DOCUMENT No. 688

STATEMENT ON BACK OF SHEET YES  NO