

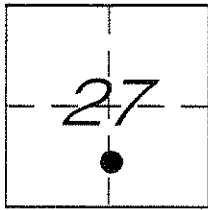
CORNER RECORD

Document Number 638-XX

City of \_\_\_\_\_

County of MERCED, California

Brief Legal Description N.E. CORNER OF LOT 882, BLOCK 43, & N.W. CORNER OF LOT 927, BLOCK 45, OF PLANADA, 4 O.P. 44



CORNER TYPE

Government Corner  Control   
Meander  Property   
Rancho  Other   
Date of Survey JUNE 4, 2013

COORDINATES (Optional)

N. \_\_\_\_\_  
E. \_\_\_\_\_  
Zone \_\_\_\_\_ NAD27  NAD83   
NAD83 Epoch \_\_\_\_\_  
Elev. \_\_\_\_\_  
Vert. Datum: NGVD29  NAVD88   
Meas. Units: Metric  Imperial

Corner - Left as found  Found and tagged  Established  Reestablished  Rebuilt

Identification and type of corner found: Evidence used to identify or procedure used to establish or reestablish the corner:

FOUND 1 3/4" AXLE FOR N.E. CORNER OF LOT 882, BLOCK 43, 4 O.P. 44, PER COUNTY FIELD BOOK 717, PAGE 1.  
FOUND 3/4" IRON ROD FOR N.W. CORNER OF LOT 927, BLOCK 45, 4 O.P. 44, PER COUNTY FIELD BOOK 717, PAGE 1.  
ALSO FOUND 2 1/4" AXLE 0.50' SOUTH OF 3/4" IRON ROD, NO RECORD.  
MONUMENTS TIED OUT PRIOR TO OVERLAY OF CABRILLO STREET.

A description of the physical condition of the monument as found and as set or reset: SEE PAGE 2

SURVEYOR'S STATEMENT

This Corner Record was prepared by me or under my direction in conformance with the Land Surveyor's Act on Sept. 30, 2013

Signed [Signature] P.L.S. or ~~FILE~~ No. 4895



COUNTY SURVEYOR'S STATEMENT

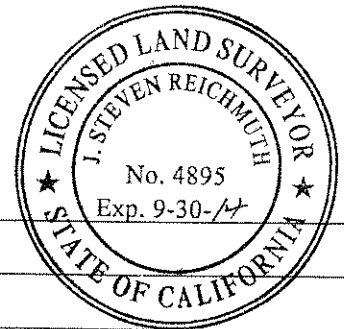
This Corner Record was received Sept. 30, 2013

and examined and filed Sept. 30, 2013

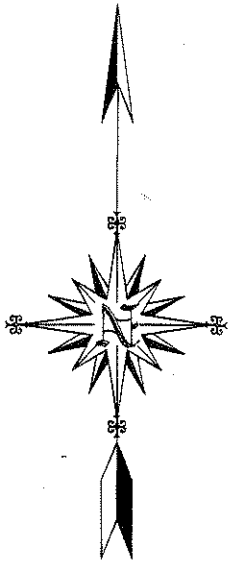
Signed [Signature] P.L.S. or ~~FILE~~ No. 4895

Title County Surveyor

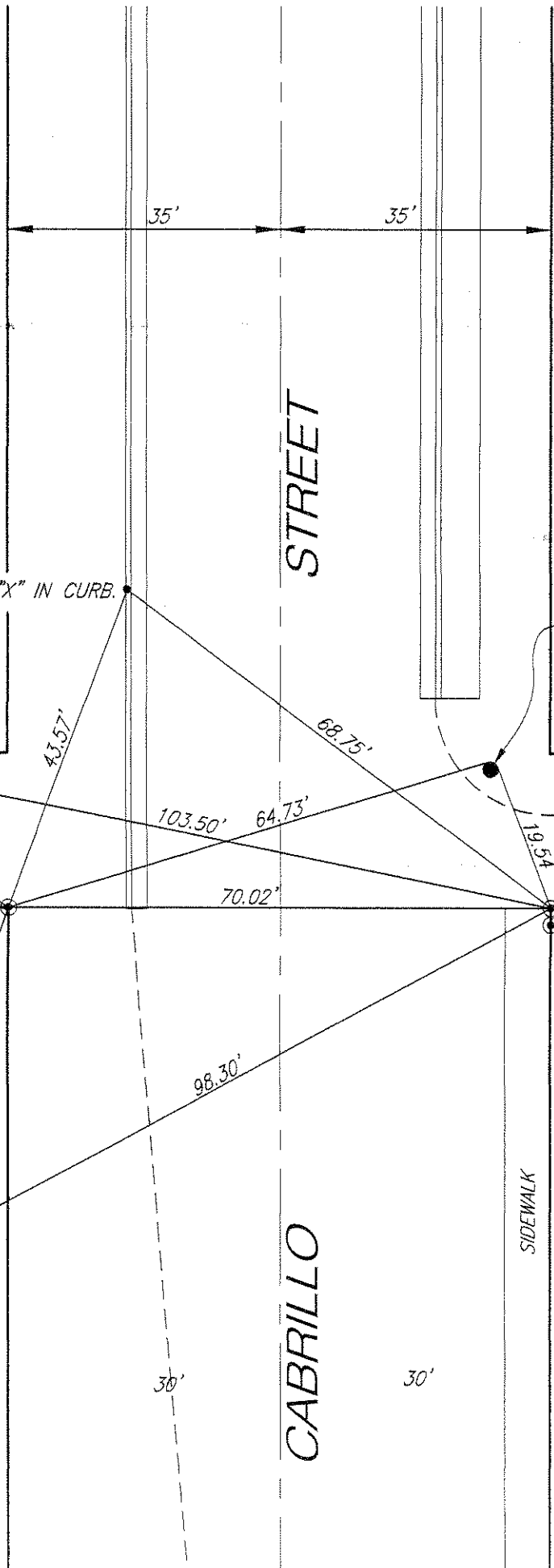
County Surveyor's Comment \_\_\_\_\_



C.R. #638-XX



SCALE: 1" = 20'



CHISELED "X" IN CURB.

CHISELED "X" IN S.E. CORNER OF CONCRETE SLAB.

ALLEY

SET NAIL AND SHINER ON N.E. & N.W. SIDES OF POWER POLE.

SET 5/8" REBAR 2' SOUTH OR FENCE & 20' EAST OF FENCE CORNER.

SET 5/8" REBAR.

FOUND 1 3/4" AXLE CO. F.B. 717, PG. 1.

FOUND 3/4" IRON ROD.

FOUND 2 1/4" AXLE 0.50' SOUTH OF 3/4" IRON ROD. TIES ARE: 25.69' TO 5/8" REBAR. 20.04' TO N.E. SIDE OF P.P. 69.00' TO CHISELED "X" IN CONCRETE CURB. 103.48' TO CHISELED "X" IN S.E. CORNER OF CONCRETE SLAB. 69.91' TO 1 3/4" AXLE. 97.90' TO CHISELED "X" IN N.E. CORNER OF CONCRETE SLAB.

CHISELED "X" INSIDE CHISELED BOX AT N.E. CORNER OF CONCRETE SIDEWALK.

SIDEWALK

CABRILLO