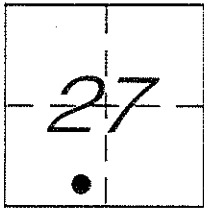


CORNER RECORD

Document Number 638-MM

City of _____ County of MERCED, California

Brief Legal Description CENTERLINE INTERSECTION OF FREMONT STREET & BRODRICK AVENUE IN COMMUNITY OF PLANADA.



CORNER TYPE

Government Corner Control
Meander Property
Rancho Other
Date of Survey JUNE 4, 2013

COORDINATES (Optional)

N. _____
E. _____
Zone _____ NAD27 NAD83
NAD83 Epoch _____
Elev. _____
Vert. Datum: NGVD29 NAVD88
Meas. Units: Metric Imperial

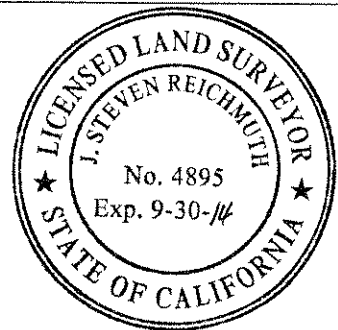
Corner - Left as found Found and tagged Established Reestablished Rebuilt

Identification and type of corner found: Evidence used to identify or procedure used to establish or reestablish the corner:
FOUND 1/2" IRON PIPE WITH YELLOW PLASTIC TAG. NO MARKINGS. NO REFERENCE FOR THIS MONUMENT. RECORDS CALL FOR 1/2" OR 5/8" IRON BAR. MONUMENT BEING TIED OUT PRIOR TO OVERLAY OF BRODRICK AVENUE.

A description of the physical condition of the monument as found and as set or reset: SEE PAGE 2

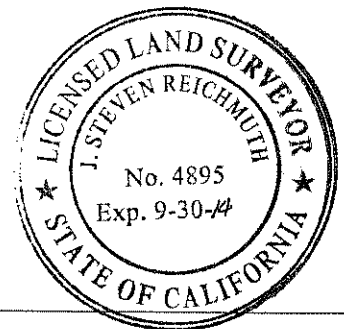
SURVEYOR'S STATEMENT

This Corner Record was prepared by me or under my direction in conformance with the Land Surveyor's Act on Sept. 30, 2013
Signed [Signature] P.L.S or ~~REG.~~ No. 4895



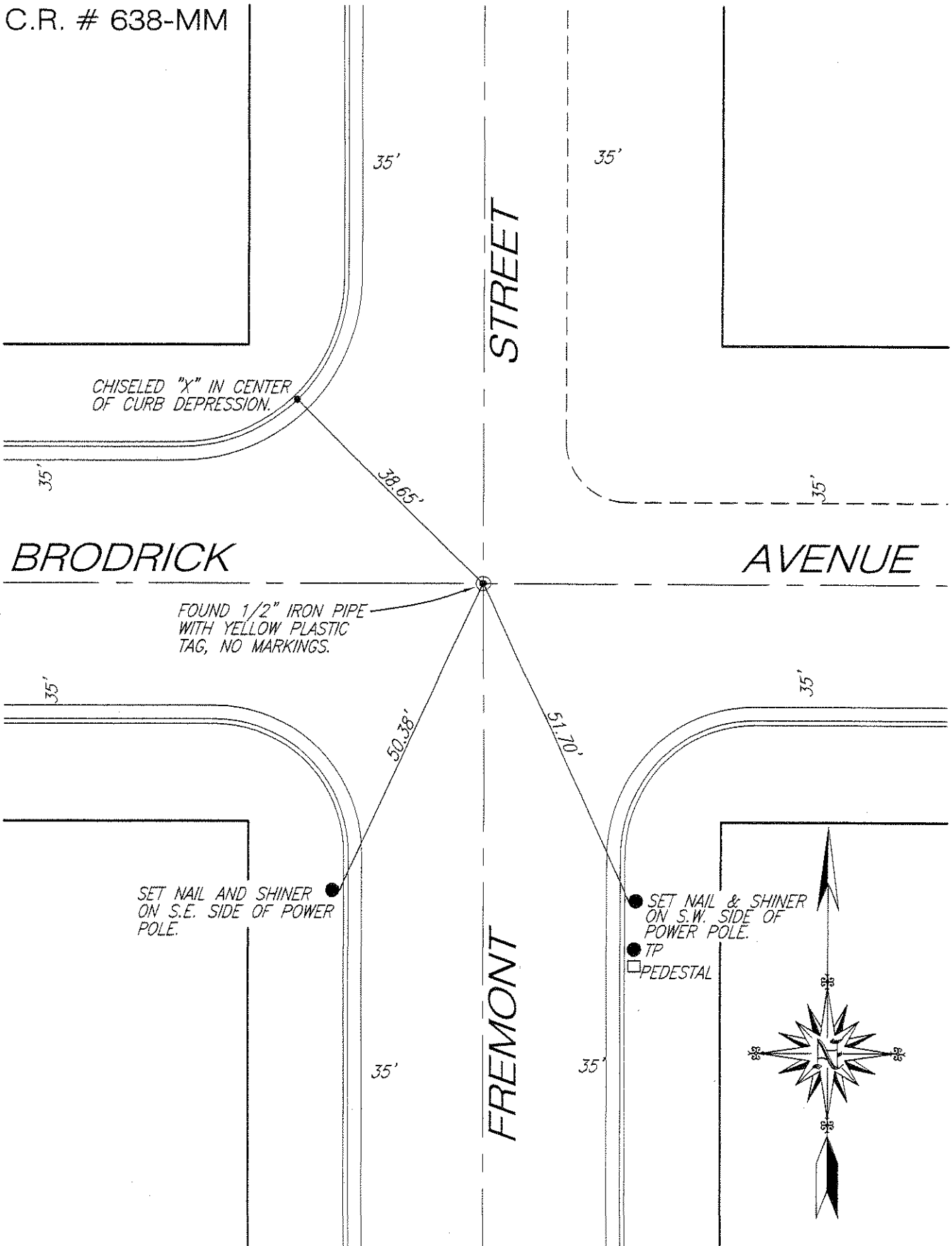
COUNTY SURVEYOR'S STATEMENT

This Corner Record was received Sept. 30, 2013
and examined and filed Sept. 30, 2013
Signed [Signature] P.L.S or ~~REG.~~ No. 4895
Title County Surveyor



County Surveyor's Comment _____

C.R. # 638-MM



SCALE: 1" = 20'