

CORNER RECORD

Document Number 638 ddd

City of \_\_\_\_\_ County of Merced, California

Brief Legal Description centerline intersection of Hupp Street and Park Street



7/15

CORNER TYPE

- Government Corner
- Meander
- Rancho
- Date of Survey \_\_\_\_\_
- Control
- Property
- Other

COORDINATES (Optional)

N. \_\_\_\_\_  
 E. \_\_\_\_\_  
 Zone \_\_\_\_\_ Datum \_\_\_\_\_  
 Elev. \_\_\_\_\_

Corner — Left as found  Found and tagged  Established  Reestablished  Rebuilt

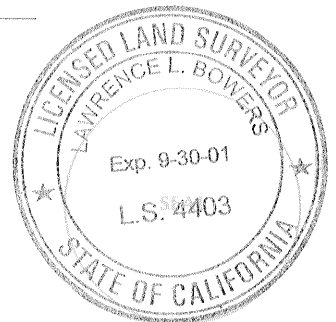
Identification and type of corner found: Evidence used to identify or procedure used to establish or reestablish the corner: monument as shown on back sketch (46-PM-38)

A description of the physical condition of the monument as found and as set or reset: good condition

SURVEYOR'S STATEMENT

This Corner Record was prepared by me or under my direction in conformance with the Land Surveyors' Act on March 3 1999.

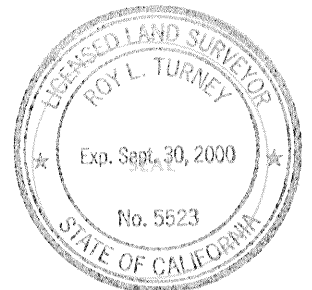
Signed [Signature] L.S. or R.C.E. Number \_\_\_\_\_



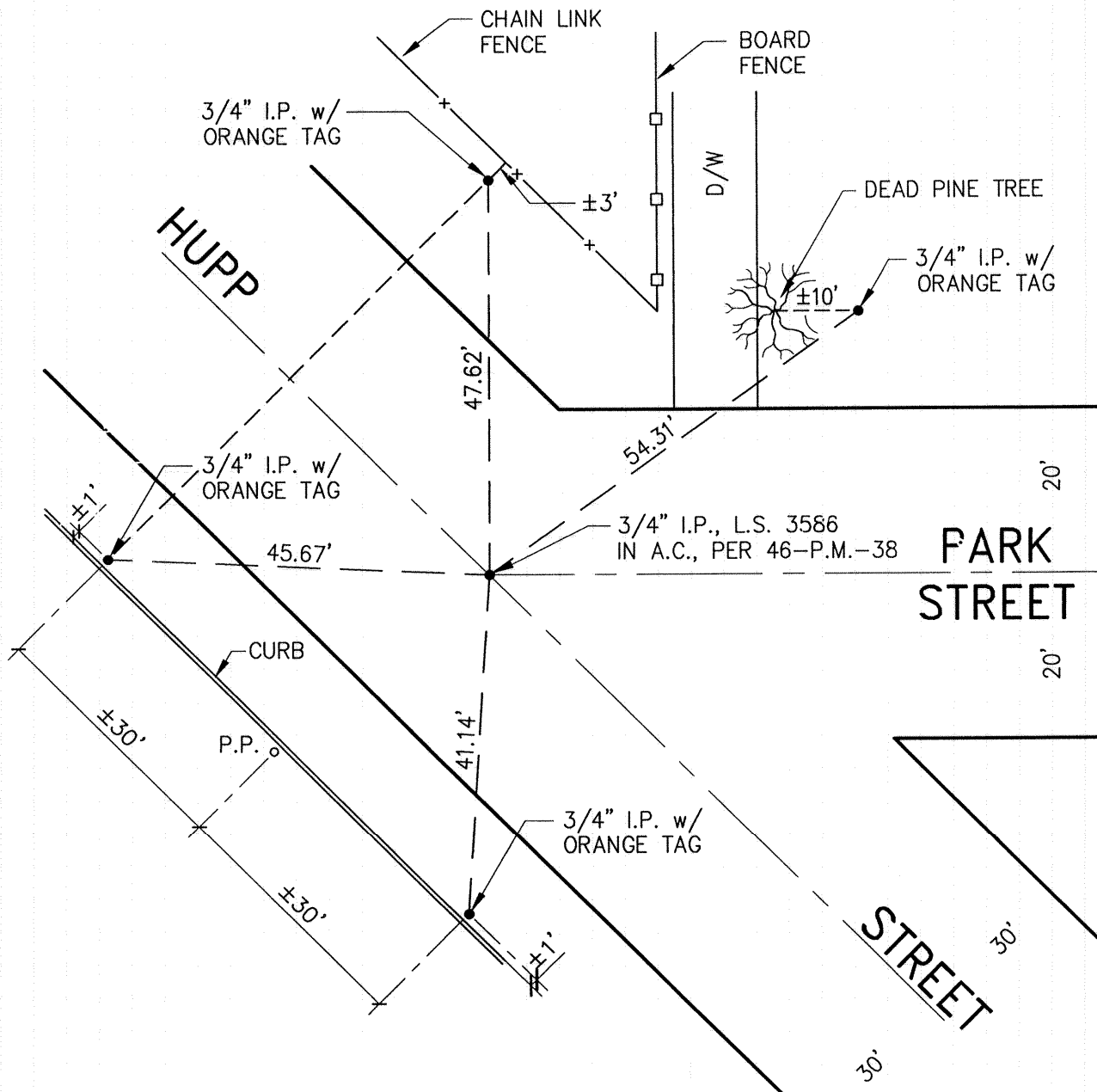
COUNTY SURVEYOR'S STATEMENT

This Corner Record was received MARCH 3 1999 and examined and filed MARCH 4 1999.

Signed [Signature] Title DEP. CO. SUR.



County Surveyor's Comment \_\_\_\_\_



NOT TO SCALE

NOTE:  
 THE 3/4" I.P. w/ ORANGE TAGS REPRESENT  
 CENTERLINE MONUMENT TIES ONLY AND DO  
 NOT INDICATE PROPERTY CORNERS AND/OR  
 RIGHT-OF-WAYS.