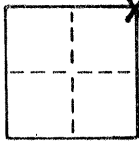


#617

### CORNER RECORD

COUNTY OF Merced T. 7 R. 15 MDB MERIDIAN CALIFORNIA  
 CORNER TYPE: GOVT. CORNER  MEANDER  RANCHO  CONTROL  OTHER   
 CORNER IDENTIFICATION — DATE OF VISIT July 26 1979



NE Corner, Section 21

CORNER — LEFT AS FOUND  FOUND AND TAGGED  REESTABLISHED OBLITERATED CORNER  REBUILT

PHYSICAL DESCRIPTION OF CORNER FOUND; EVIDENCE AND METHOD USED TO IDENTIFY OR REESTABLISH

Dug down 36" deep, could not locate 1" pipe called for in ties. Set point by ties.

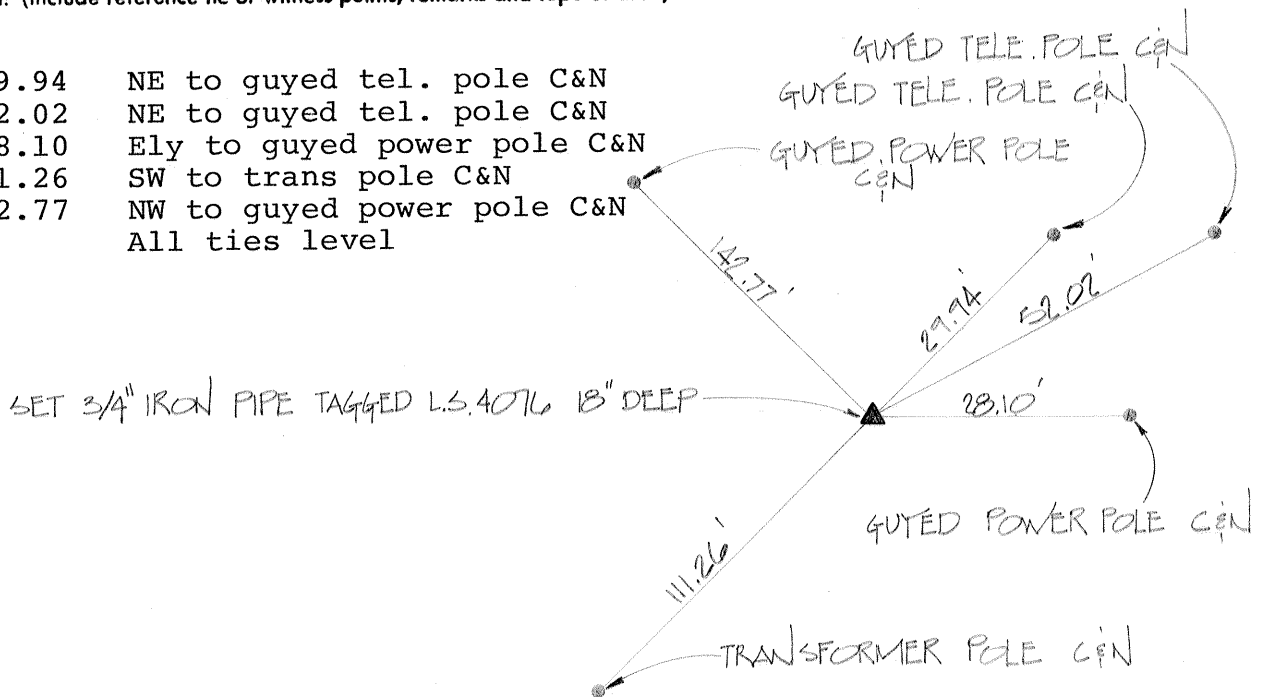
PHYSICAL DESCRIPTION OF MONUMENTS REBUILT OR PERPETUATED

Set 3/4" iron pipe tagged L.S. 4076 18" deep.

CALIFORNIA COORDINATE SYSTEM ORDER: FIRST  SECOND  THIRD   
 STATIONS USED: NGS (USC & GS)  STATE  COUNTY  OTHER  STATION \_\_\_\_\_ STATION \_\_\_\_\_  
 ZONE \_\_\_\_\_ ELEVATION \_\_\_\_\_ NORTHINGS (Y) \_\_\_\_\_ EASTINGS (X) \_\_\_\_\_

SKETCH: (Include reference tie or witness points, remarks and topo of area)

- 29.94 NE to guyed tel. pole C&N
- 52.02 NE to guyed tel. pole C&N
- 28.10 Ely to guyed power pole C&N
- 111.26 SW to trans pole C&N
- 142.77 NW to guyed power pole C&N
- All ties level



SURVEYOR'S CERTIFICATE

THIS CORNER RECORD WAS PREPARED BY ME OR UNDER MY DIRECTION IN CONFORMANCE WITH THE LAND SURVEYORS ACT ON July 26 1979

SIGNED: [Signature]  
 L.S. or R.C.E. No.: 4076

COUNTY SURVEYOR'S CERTIFICATE

THE CORNER RECORD WAS RECEIVED \_\_\_\_\_ 19\_\_\_\_ AND EXAMINED AND FILED \_\_\_\_\_ 19\_\_\_\_

BY: \_\_\_\_\_ TITLE: \_\_\_\_\_

DOCUMENT No. 617

STATEMENT ON BACK OF SHEET

YES  NO