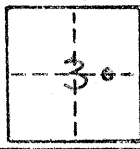


CORNER RECORD

COUNTY OF MERCED T. 6 S. R. 10 E. M.D. M.D. MERIDIAN CALIFORNIA

CORNER TYPE: GOV'T. CORNER MEANDER RANCHO CONTROL OTHER

CORNER IDENTIFICATION — DATE OF VISIT January 4 1980



Corner for Lots 4, 5, 6, 7 of the Siem Colony (3R38)

CORNER — LEFT AS FOUND FOUND AND TAGGED REESTABLISHED OBLITERATED CORNER REBUILT

PHYSICAL DESCRIPTION OF CORNER FOUND, EVIDENCE AND METHOD USED TO IDENTIFY OR REESTABLISH

No corner found. Reestablished the proper position by proration between existing Lot corners.

PHYSICAL DESCRIPTION OF MONUMENTS REBUILT OR PERPETUATED

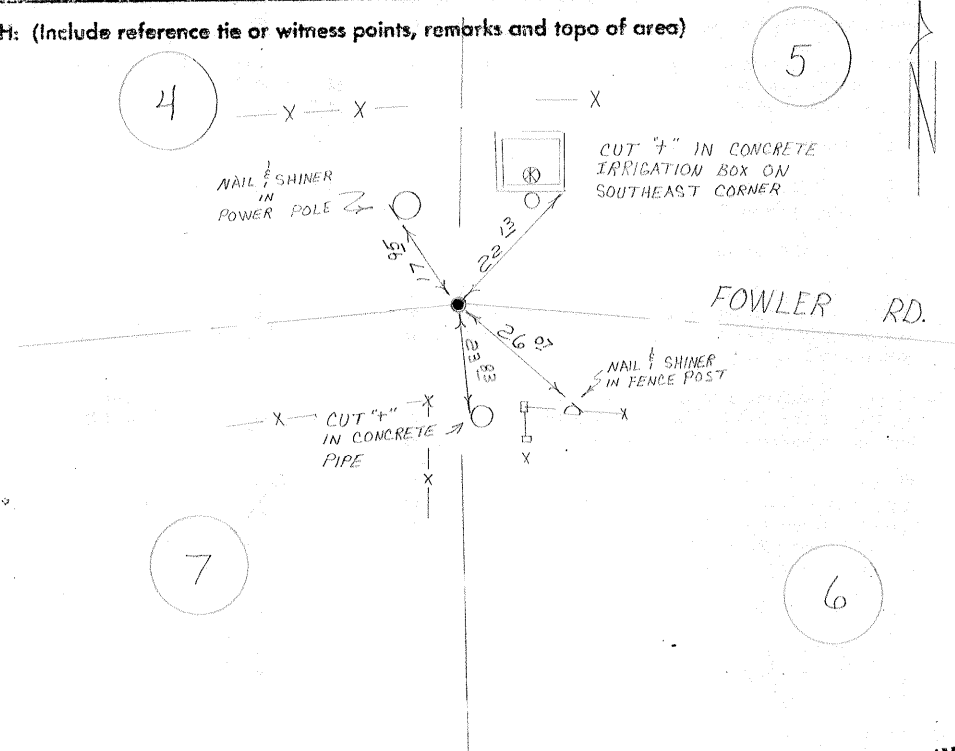
Set 1 1/4" outside diameter iron pipe, 30" long, at the reestablished position with plug County Surveyor

CALIFORNIA COORDINATE SYSTEM ORDER: FIRST SECOND THIRD

STATIONS USED: NGS (USC & GS) STATE COUNTY OTHER STATION _____ STATION _____

ZONE _____ ELEVATION _____ NORTHINGS (Y) _____ EASTINGS (X) _____

SKETCH: (Include reference tie or witness points, remarks and topo of area)



SURVEYOR'S CERTIFICATE

THIS CORNER RECORD WAS PREPARED BY ME OR UNDER MY DIRECTION IN CONFORMANCE WITH THE LAND SURVEYORS ACT ON _____ 19 _____

SIGNED: [Signature]

L.S. or R.C.E. No. 14648

SEAL

COUNTY PROFESSIONAL SURVEYOR'S CERTIFICATE

THE CORNER RECORD WAS RECEIVED AND EXAMINED BY ME ON 2/11/80 1980

REGISTERED PROFESSIONAL SURVEYOR [Signature]

No. 14648

DOCUMENT NO. 595-K

STATEMENT ON BACK OF SHEET

STATE OF CALIFORNIA

YES NO