

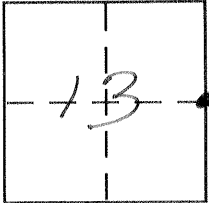
**CORNER RECORD**

Document Number 592

City of \_\_\_\_\_

County of MERCED, California

Brief Legal Description EAST 1/4 COR. SECTION 13, T. 7S., R. 12E., M. D. B. & M



**CORNER TYPE**

Government Corner  Control   
Meander  Property   
Rancho  Other   
Date of Survey 1-9-2003

**COORDINATES (Optional)**

N. \_\_\_\_\_  
E. \_\_\_\_\_  
Zone \_\_\_\_\_ NAD27  NAD83   
NAD83 Epoch \_\_\_\_\_  
Elev. \_\_\_\_\_  
Vert. Datum: NGVD29  NAVD88   
Meas. Units: Metric  Imperial

Corner - Left as found  Found and tagged  Established  Reestablished  Rebuilt

Identification and type of corner found: Evidence used to identify or procedure used to establish or reestablish the corner:

EAST 1/4 CORNER SECTION 13, TOWNSHIP 7 SOUTH, RANGE 12 EAST, M. D. B. & M. AS SHOWN ON 14 P.M. 48, 29 P.M. 24, 24 P.M. 2, 46 P.M. 37, & VARIOS OTHER MAPS, RECORDED IN MERCED COUNTY RECORDS.

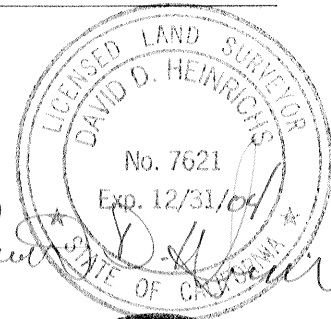
A description of the physical condition of the monument as found and as set or reset: FOUND 1/4" IRON PIPE, SET TAG L.S. 7621. MAY BE DESTROYED WITH MID PIPE CONSTRUCTION.

**SURVEYOR'S STATEMENT**

This Corner Record was prepared by me or under my direction in conformance with

the Land Surveyor's Act on JANUARY 10, 2003

Signed David D. Heinrichs P.L.S. or R.C.E. No. 7621



**COUNTY SURVEYOR'S STATEMENT**

This Corner Record was received JAN 15 - 03

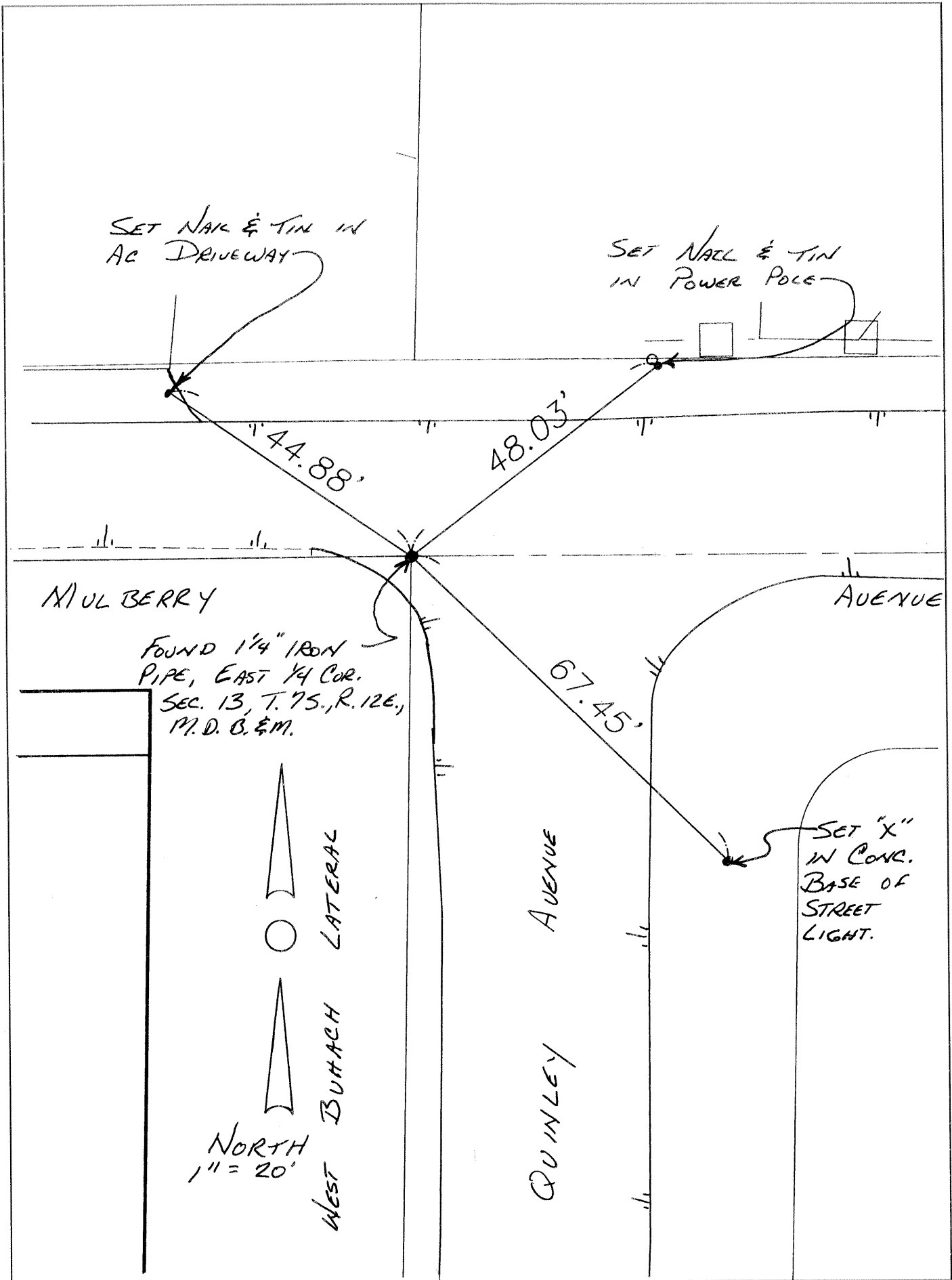
and examined and filed FEB - 28 - 03

Signed Roy L. Turney P.L.S. or R.C.E. No. 5523

Title Deputy Co. Surveyor

County Surveyor's Comment None





SET NAIL & TIN IN AC DRIVEWAY

SET NAIL & TIN IN POWER POLE

44.88'

48.03'

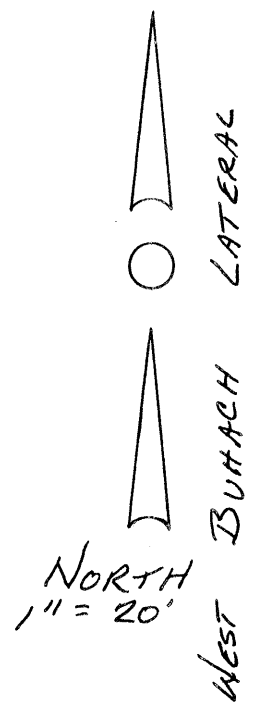
MULBERRY

AVENUE

FOUND 1 1/4" IRON PIPE, EAST 1/4 COR. SEC. 13, T. 75., R. 12E., M.D. B. & M.

67.45'

SET "X" IN CONC. BASE OF STREET LIGHT.



QUINLEY AVENUE