

CORNER RECORD

DPD-3011A (Rev. 3/98) CT# 7541-4554-2

589C

City of \_\_\_\_\_ County of Merced, California

Brief Legal Description Lot Corner in Sec.24,T7S,R12E,MDB&M Hwy 140 near Quinley Avenue

CORNER TYPE

COORDINATES(Optional)



Government Corner [ ] Control [ ]
Meander [ ] Property [x]
Rancho [ ] Other [ ]

N. \_\_\_\_\_
E. \_\_\_\_\_
Zone \_\_\_\_\_ NAD27 [ ] NAD83 [ ]
NAD83 Epoch \_\_\_\_\_
Elevation \_\_\_\_\_
Vert. Datum: NGVD29 [ ] NAV88 [ ]
Meas. Units: Metric [ ] Imperial [ ]

Date of Survey June 3, 2000

Corner - Left as found [x] Found and tagged [ ] Established [ ] Reestablished [ ] Rebuilt [ ]

Identification and type of corner found: Evidence used to identify or procedure used to establish or reestablish the corner:
Found South West Corner Parcel A, 3/4" IP with plug stamped RCE 26938 down 0.4 ft., 50 ft. north of section line, also found 3/4" IP with plug stamped LS 4403 that is 0.2 ft. west of RCE pipe. RCE pipe found as per following records:

- 1. Record Of Survey filed in Volume 25 Page 35-36 of Surveys Merced County, June 1, 1990
2. Parcel Map filed in Volume 59 page 44-45 of Parcel Maps Merced County September 29, 1987

A description of the physical condition of the monument as found and as set or reset:

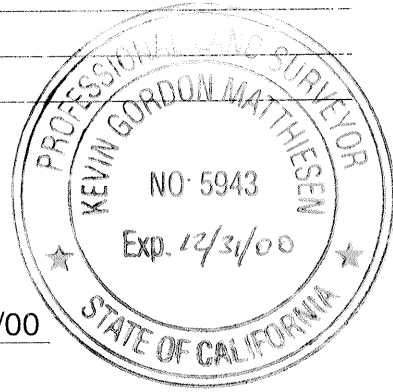
Left both pipes as found, made new ties to 3/4" IP RCE 26938.

See page 2 for corner ties.

SURVEYOR'S STATEMENT

This Corner Record was prepared by me or under my direction in conformance with the Land Surveyor's Act on June 15, 2000.

Signed Kevin Gordon Matthesen P.L.S. Number 5943- Expires 12/31/00
For the State of California
Department of Transportation



COUNTY SURVEYOR'S STATEMENT

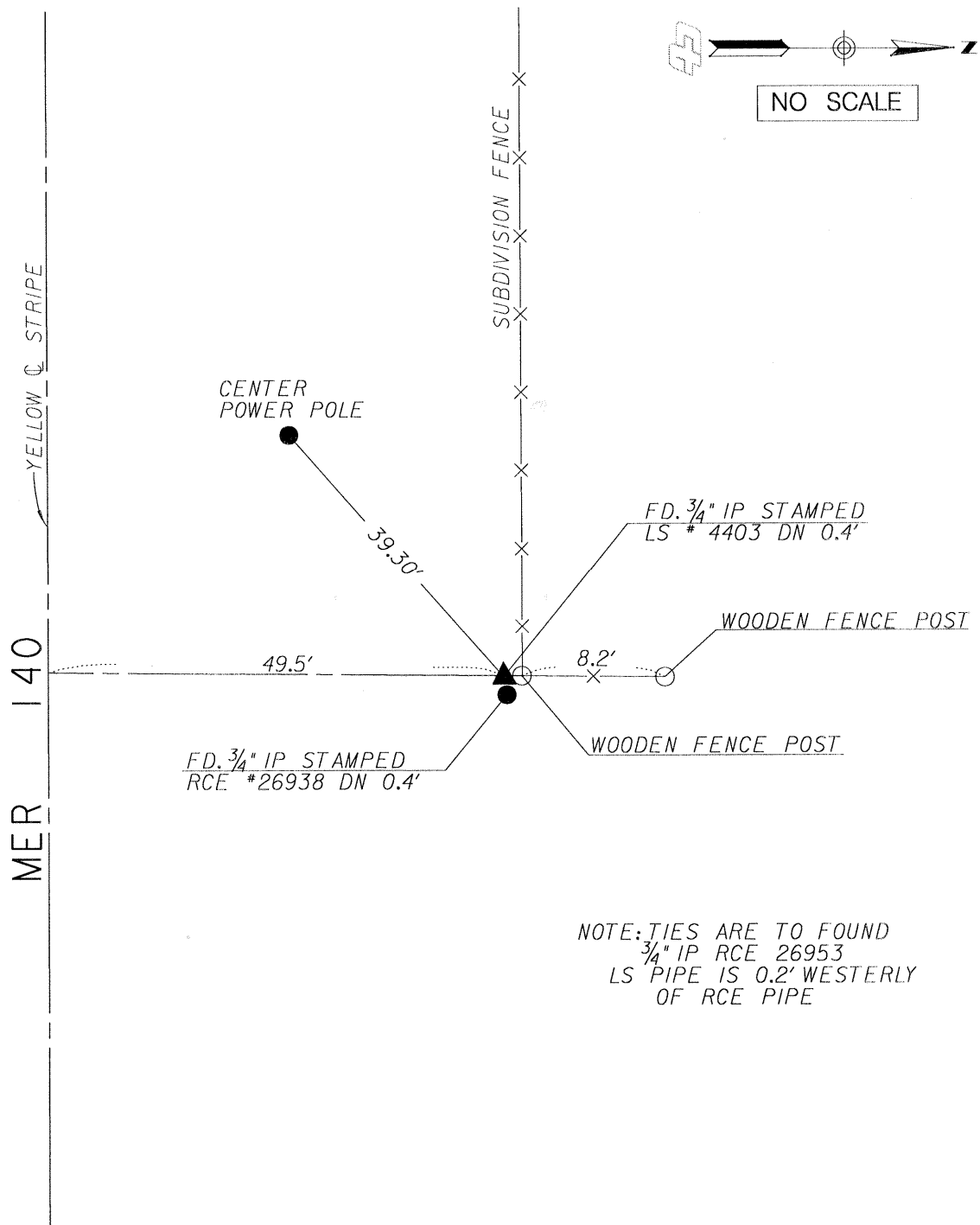
This Corner Record was received JULY 3, 2000 and examined and filed JULY 21, 2000.

Signed Roy L. Turney P.L.S. or C.E. Number 5523
Title DEP. CO. SURVEYOR



County Surveyor's Comment

SOUTHWEST CORNER PARCEL A  
 FROM RECORD OF SURVEY  
 VOL. 25 PG 35  
 SECTION 24 T7S, R12E, M.D.B.&M.



NOTE: TIES ARE TO FOUND  
 3/4" IP RCE 26953  
 LS PIPE IS 0.2' WESTERLY  
 OF RCE PIPE