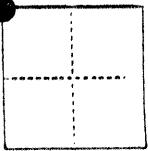


NO. 544

COUNTY OF Merced T. 12 South R. 9 East Mr. Diablo MERIDIAN CALIFORNIA

CORNER TYPE: GOV'T. CORNER  MEANDER  RANCHO  CONTROL  OTHER   
CORNER IDENTIFICATION — DATE OF VISIT December 19 75



Northwest Corner, Section 2, 12/9, M.D.B.&M.

CORNER — LEFT AS FOUND  FOUND AND TAGGED  REESTABLISHED OBLITERATED CORNER  REBUILT

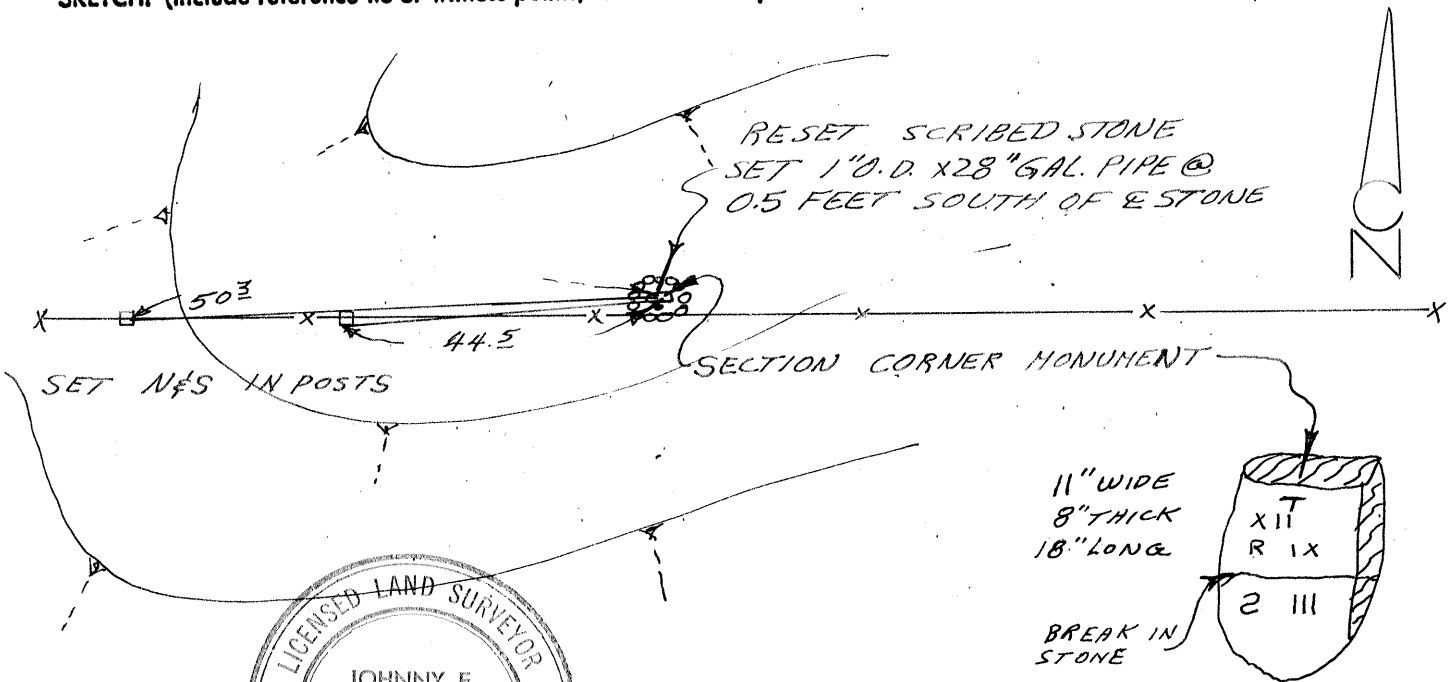
PHYSICAL DESCRIPTION OF CORNER FOUND, EVIDENCE AND METHOD USED TO IDENTIFY OR REESTABLISH

Found a scribed 11" x 8" x 18" scribed sandstone 10 feet Southeast of mound of stone in fence line. Reset stone in center of mound and placed a 1" O.D. x 28" galvanized iron pipe at 0.5 feet South of stone.

PHYSICAL DESCRIPTION OF MONUMENTS REBUILT OR PERPETUATED

CALIFORNIA COORDINATE SYSTEM ORDER: FIRST  SECOND  THIRD   
STATIONS USED: NGS (USC & GS)  STATE  COUNTY  OTHER  STATION \_\_\_\_\_ STATION \_\_\_\_\_  
ZONE \_\_\_\_\_ ELEVATION \_\_\_\_\_ NORTHINGS (Y) \_\_\_\_\_ EASTINGS (X) \_\_\_\_\_

SKETCH: (Include reference tie or witness points, remarks and topo of area)



THIS CORNER RECORD WAS PREPARED BY ME OR UNDER MY DIRECTION IN CONFORMANCE WITH THE LAND SURVEYORS ACT ON DECEMBER 30 1975

SIGNED: Johnny E. Davis  
L.S. 4156

COUNTY SURVEYOR'S CERTIFICATE

THE CORNER RECORD WAS RECEIVED \_\_\_\_\_ 19\_\_\_\_\_  
AND EXAMINED AND FILED \_\_\_\_\_ 19\_\_\_\_\_  
BY: \_\_\_\_\_

TITLE: \_\_\_\_\_

DOCUMENT NO. 544