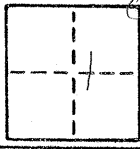


No 54

### CORNER RECORD

COUNTY OF MERCED T. 9S R. 1E M.D MERIDIAN CALIFORNIA  
 CORNER TYPE: GOVT. CORNER  MEANDER  RANCHO  CONTROL  OTHER   
 CORNER IDENTIFICATION — DATE OF VISIT September 1979



*Northeast corner of section 1.*  
*Purpose: To replace corner destroyed during County road reconstruction.*

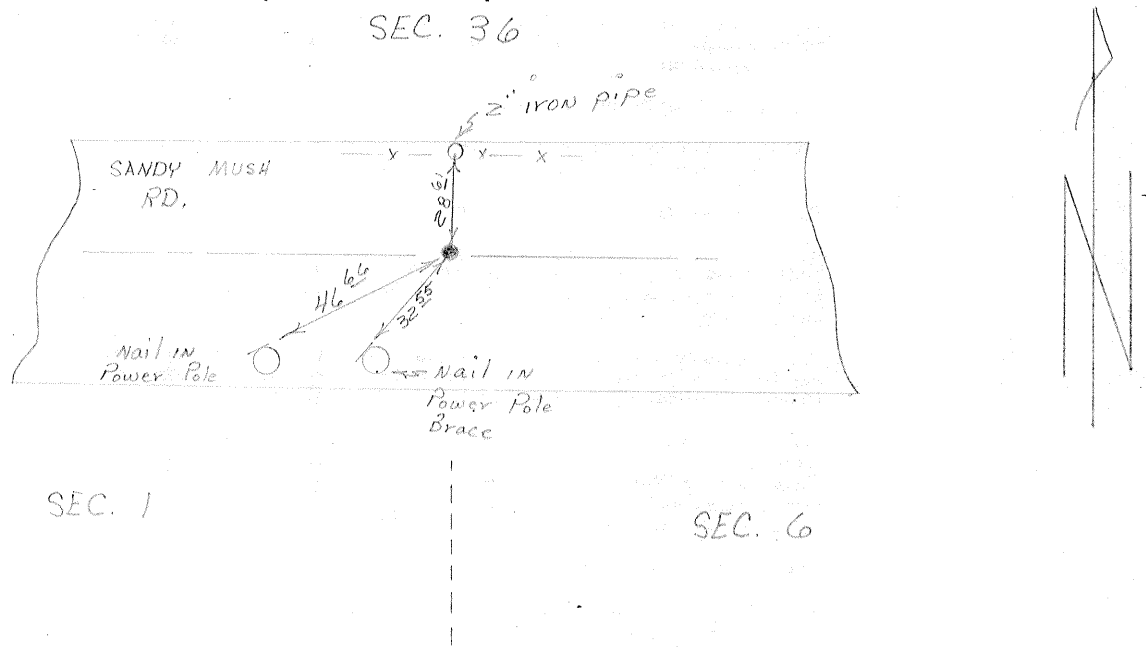
CORNER — LEFT AS FOUND  FOUND AND TAGGED  REESTABLISHED OBLITERATED CORNER  REBUILT

PHYSICAL DESCRIPTION OF CORNER FOUND; EVIDENCE AND METHOD USED TO IDENTIFY OR REESTABLISH  
*No monument found. Used swing ties to reestablish.*

PHYSICAL DESCRIPTION OF MONUMENTS REBUILT OR PERPETUATED  
*Set 2" inside diameter iron pipe in survey encasement. Tagged "Merced County Surveyor".*

CALIFORNIA COORDINATE SYSTEM ORDER: FIRST  SECOND  THIRD   
 STATIONS USED: NGS (USC & GS)  STATE  COUNTY  OTHER  STATION \_\_\_\_\_ STATION \_\_\_\_\_  
 ZONE \_\_\_\_\_ ELEVATION \_\_\_\_\_ NORTHINGS (Y) \_\_\_\_\_ EASTINGS (X) \_\_\_\_\_

SKETCH: (Include reference tie or witness points, remarks and topo of area)



SURVEYOR CERTIFICATE  
 THIS CORNER RECORD WAS PREPARED BY ME OR UNDER MY DIRECTION IN CONFORMANCE WITH THE LAND SURVEYORS ACT ON 2/21/80 No. 14648  
 SIGNED: [Signature]  
 L.S. or R.C.E. No.: \_\_\_\_\_  
 STATE OF CALIFORNIA

COUNTY SURVEYORS CERTIFICATE  
 THE CORNER RECORD WAS RECEIVED 2/21/80 1980 AND EXAMINED AND FILED BY: [Signature]  
 TITLE: \_\_\_\_\_  
 DOCUMENT No. 543  
 STATEMENT ON BACK OF SHEET YES  NO